

Product datasheet for **TA506816S**

Placental lactogen (CSH1) Mouse Monoclonal Antibody [Clone ID: OTI4D6]

Product data:

Product Type:	Primary Antibodies
Clone Name:	OTI4D6
Applications:	IF, WB
Recommended Dilution:	WB 1:4000, IF 1:100
Reactivity:	Human
Host:	Mouse
Isotype:	IgG1
Clonality:	Monoclonal
Immunogen:	Full length human recombinant protein of human CSH1(NP_072166) produced in HEK293T cell.
Formulation:	PBS (pH 7.3) containing 1% BSA, 50% glycerol and 0.02% sodium azide.
Concentration:	1 mg/ml
Purification:	Purified from mouse ascites fluids or tissue culture supernatant by affinity chromatography (protein A/G)
Conjugation:	Unconjugated
Storage:	Store at -20°C as received.
Stability:	Stable for 12 months from date of receipt.
Predicted Protein Size:	28.6 kDa
Gene Name:	chorionic somatomammotropin hormone 1
Database Link:	NP_072166 Entrez Gene 1442 Human P0DML2



[View online »](#)

Background:

The protein encoded by this gene is a member of the somatotropin/prolactin family of hormones and plays an important role in growth control. The gene is located at the growth hormone locus on chromosome 17 along with four other related genes in the same transcriptional orientation; an arrangement which is thought to have evolved by a series of gene duplications. Although the five genes share a remarkably high degree of sequence identity, they are expressed selectively in different tissues. Alternative splicing generates additional isoforms of each of the five growth hormones, leading to further diversity and potential for specialization. This particular family member is expressed mainly in the placenta and utilizes multiple transcription initiation sites. Expression of the identical mature proteins for chorionic somatomammotropin hormones 1 and 2 is upregulated during development, although the ratio of 1 to 2 increases by term. Mutations in this gene result in placental lactogen deficiency and Silver-Russell syndrome. [provided by RefSeq, Jul 2008]

Synonyms:

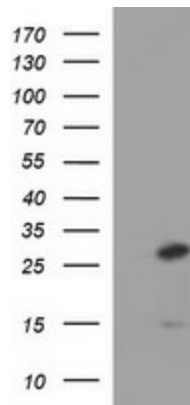
CSA; CSH2; CSMT; FLJ75407; PL

Protein Families:

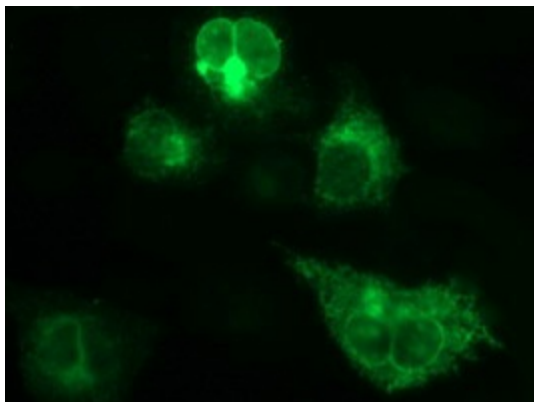
Druggable Genome

Protein Pathways:

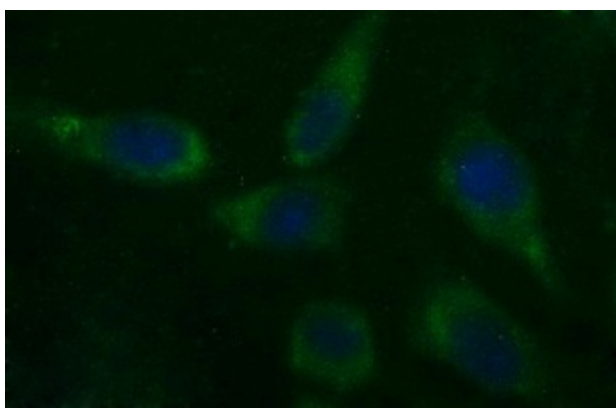
Jak-STAT signaling pathway, Neuroactive ligand-receptor interaction

Product images:

HEK293T cells were transfected with the pCMV6-ENTRY control (Left lane) or pCMV6-ENTRY CSH1 ([RC223244], Right lane) cDNA for 48 hrs and lysed. Equivalent amounts of cell lysates (5 ug per lane) were separated by SDS-PAGE and immunoblotted with anti-CSH1. Positive lysates [LY411615] (100ug) and [LC411615] (20ug) can be purchased separately from OriGene.



Anti-CSH1 mouse monoclonal antibody ([TA506816]) immunofluorescent staining of COS7 cells transiently transfected by pCMV6-ENTRY CSH1 ([RC223244]).



Immunofluorescent staining of HeLa cells using anti-CSH1 mouse monoclonal antibody ([TA506816]).