

## Product datasheet for **TA506806M**

### **MMP13 Mouse Monoclonal Antibody [Clone ID: OTI2D8]**

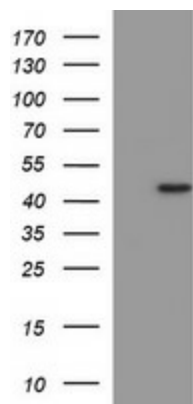
#### **Product data:**

|                         |                                                                                                                                                                              |
|-------------------------|------------------------------------------------------------------------------------------------------------------------------------------------------------------------------|
| Product Type:           | Primary Antibodies                                                                                                                                                           |
| Clone Name:             | OTI2D8                                                                                                                                                                       |
| Applications:           | IF, IHC, WB                                                                                                                                                                  |
| Recommended Dilution:   | WB 1:4000, IHC 1:150, IF 1:100                                                                                                                                               |
| Reactivity:             | Human, Mouse, Rat                                                                                                                                                            |
| Host:                   | Mouse                                                                                                                                                                        |
| Isotype:                | IgG2a                                                                                                                                                                        |
| Clonality:              | Monoclonal                                                                                                                                                                   |
| Immunogen:              | Human recombinant protein fragment corresponding to amino acids 104-471 of human MMP13 (NP_002418) produced in HEK293T cell.                                                 |
| Formulation:            | PBS (pH 7.3) containing 1% BSA, 50% glycerol and 0.02% sodium azide.                                                                                                         |
| Concentration:          | 1 mg/ml                                                                                                                                                                      |
| Purification:           | Purified from mouse ascites fluids or tissue culture supernatant by affinity chromatography (protein A/G)                                                                    |
| Conjugation:            | Unconjugated                                                                                                                                                                 |
| Storage:                | Store at -20°C as received.                                                                                                                                                  |
| Stability:              | Stable for 12 months from date of receipt.                                                                                                                                   |
| Predicted Protein Size: | 42.2 kDa                                                                                                                                                                     |
| Gene Name:              | matrix metalloproteinase 13                                                                                                                                                  |
| Database Link:          | <a href="#">NP_002418</a><br><a href="#">Entrez Gene 17386 Mouse</a> <a href="#">Entrez Gene 171052 Rat</a> <a href="#">Entrez Gene 4322 Human</a><br><a href="#">P45452</a> |
| Synonyms:               | CLG3; MANDP1; MDST; MMP-13                                                                                                                                                   |
| Protein Families:       | Druggable Genome, Protease                                                                                                                                                   |

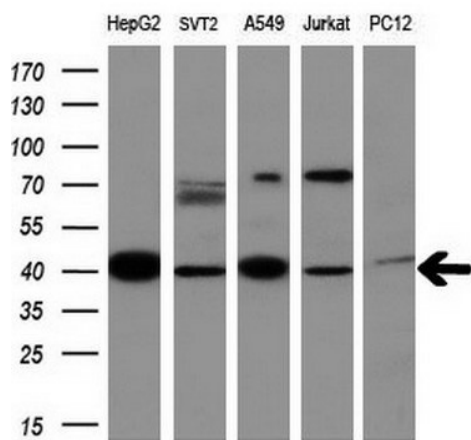


[View online »](#)

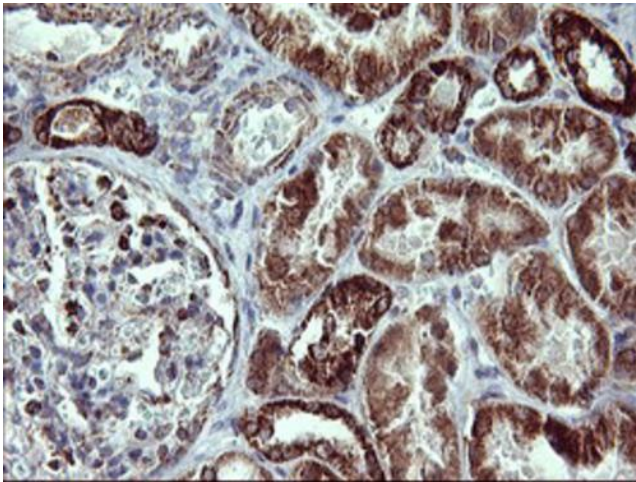
## Product images:



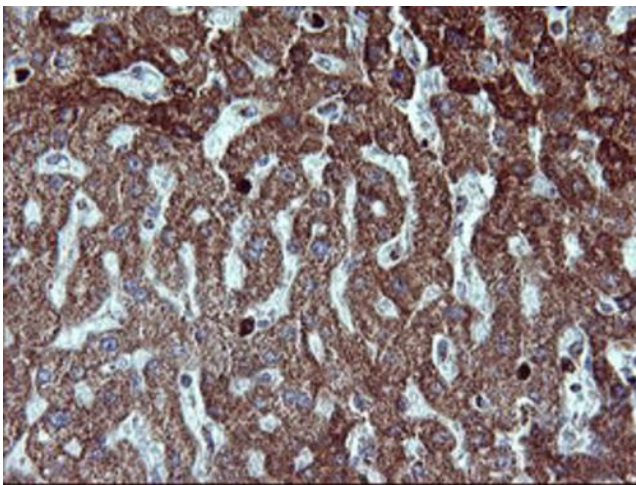
HEK293T cells were transfected with the pCMV6-ENTRY control (Cat# [PS100001], Left lane) or pCMV6-ENTRY MMP13 (Cat# [RC224156], Right lane) cDNA for 48 hrs and lysed. Equivalent amounts of cell lysates (5 ug per lane) were separated by SDS-PAGE and immunoblotted with anti-MMP13 (Cat# [TA506806]). Positive lysates [LY400869] (100ug) and [LC400869] (20ug) can be purchased separately from OriGene.



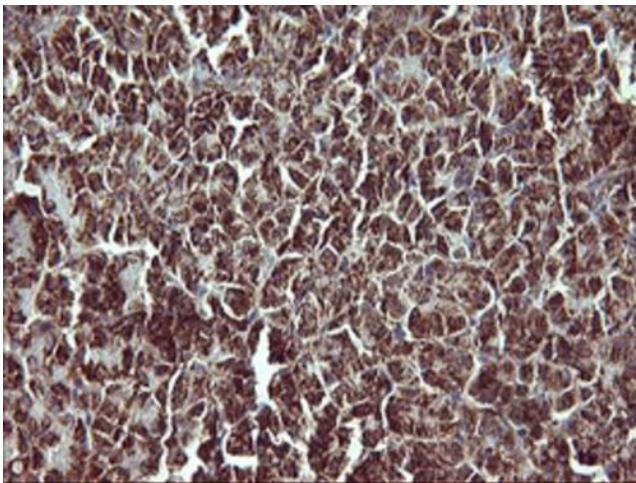
Western blot analysis of extracts (10ug) from 5 different cell lines by using anti-MMP13 monoclonal antibody at 1:200 dilution.



Immunohistochemical staining of paraffin-embedded Human Kidney tissue within the normal limits using anti-MMP13 mouse monoclonal antibody. Heat-induced epitope retrieval by EDTA solution buffer pH 8.0 at 120°C for 3 min.

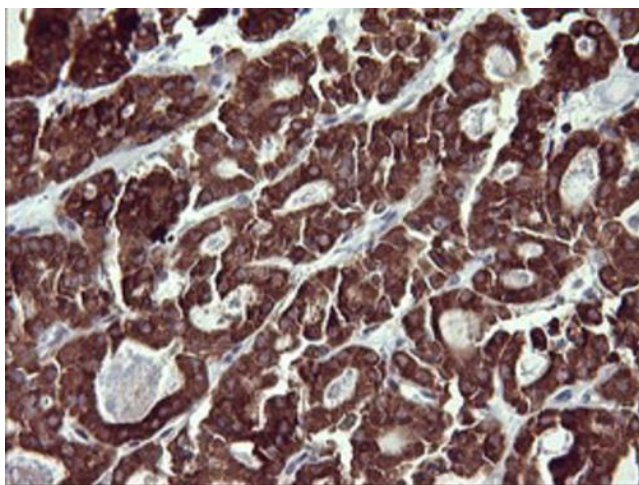


Immunohistochemical staining of paraffin-embedded Human liver tissue within the normal limits using anti-MMP13 mouse monoclonal antibody. Heat-induced epitope retrieval by EDTA solution buffer pH 8.0 at 120°C for 3 min.

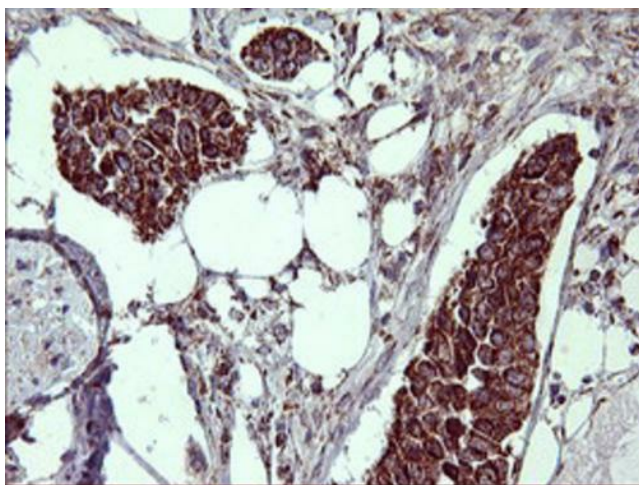


Immunohistochemical staining of paraffin-embedded Human pancreas tissue within the normal limits using anti-MMP13 mouse monoclonal antibody. Heat-induced epitope retrieval by EDTA solution buffer pH 8.0 at 120°C for 3 min.

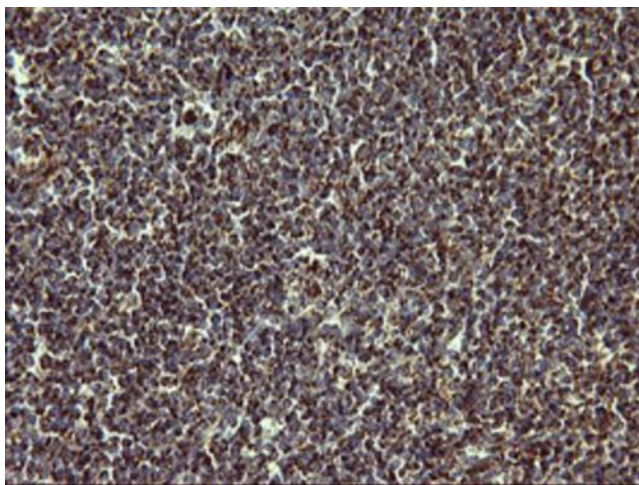




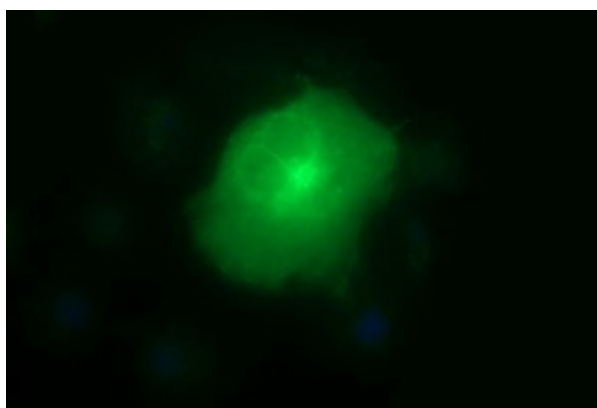
Immunohistochemical staining of paraffin-embedded Carcinoma of Human thyroid tissue using anti-MMP13 mouse monoclonal antibody. Heat-induced epitope retrieval by EDTA solution buffer pH 8.0 at 120°C for 3 min.



Immunohistochemical staining of paraffin-embedded Carcinoma of Human bladder tissue using anti-MMP13 mouse monoclonal antibody. Heat-induced epitope retrieval by EDTA solution buffer pH 8.0 at 120°C for 3 min.



Immunohistochemical staining of paraffin-embedded Human lymph node tissue within the normal limits using anti-MMP13 mouse monoclonal antibody. Heat-induced epitope retrieval by EDTA solution buffer pH 8.0 at 120°C for 3 min.



Anti-MMP13 mouse monoclonal antibody ([TA506806]) immunofluorescent staining of COS7 cells transiently transfected by pCMV6-ENTRY MMP13 ([RC224156]).