

Product datasheet for **TA506806**

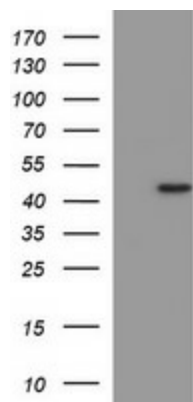
MMP13 Mouse Monoclonal Antibody [Clone ID: OTI2D8]

Product data:

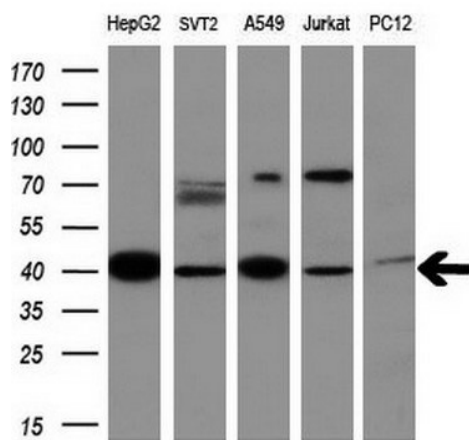
Product Type:	Primary Antibodies
Clone Name:	OTI2D8
Applications:	IF, IHC, WB
Recommended Dilution:	WB 1:4000, IHC 1:150, IF 1:100
Reactivity:	Human, Mouse, Rat
Host:	Mouse
Isotype:	IgG2a
Clonality:	Monoclonal
Immunogen:	Human recombinant protein fragment corresponding to amino acids 104-471 of human MMP13 (NP_002418) produced in HEK293T cell.
Formulation:	PBS (PH 7.3) containing 1% BSA, 50% glycerol and 0.02% sodium azide.
Concentration:	1 mg/ml
Purification:	Purified from mouse ascites fluids or tissue culture supernatant by affinity chromatography (protein A/G)
Conjugation:	Unconjugated
Storage:	Store at -20°C as received.
Stability:	Stable for 12 months from date of receipt.
Predicted Protein Size:	42.2 kDa
Gene Name:	matrix metalloproteinase 13
Database Link:	NP_002418 Entrez Gene 17386 Mouse Entrez Gene 171052 Rat Entrez Gene 4322 Human P45452
Synonyms:	CLG3; MANDP1; MDST; MMP-13
Protein Families:	Druggable Genome, Protease



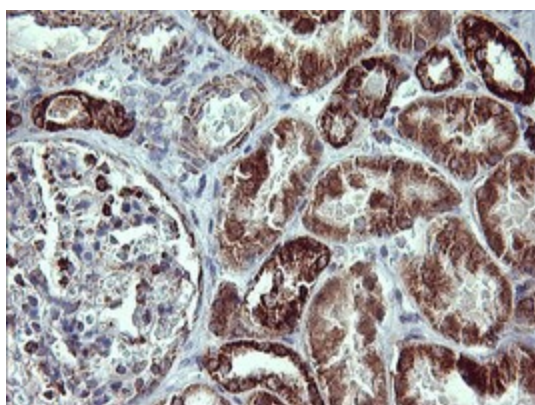
[View online »](#)

Product images:


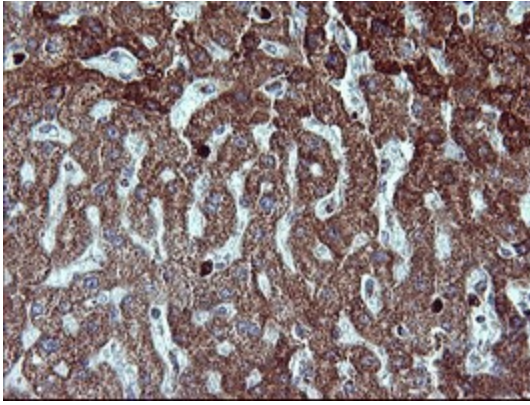
HEK293T cells were transfected with the pCMV6-ENTRY control (Cat# [PS100001], Left lane) or pCMV6-ENTRY MMP13 (Cat# [RC224156], Right lane) cDNA for 48 hrs and lysed. Equivalent amounts of cell lysates (5 ug per lane) were separated by SDS-PAGE and immunoblotted with anti-MMP13(Cat# TA506806). Positive lysates [LY400869] (100ug) and [LC400869] (20ug) can be purchased separately from OriGene.



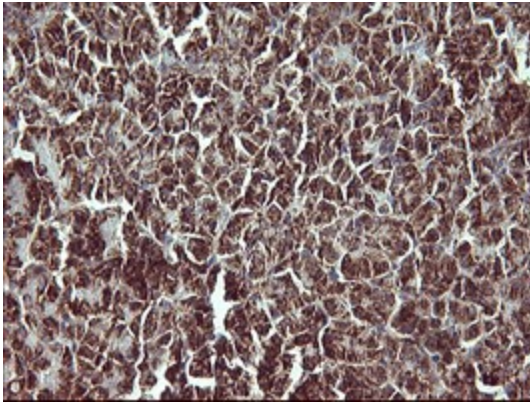
Western blot analysis of extracts (10ug) from 5 different cell lines by using anti-MMP13 monoclonal antibody at 1:200 dilution.



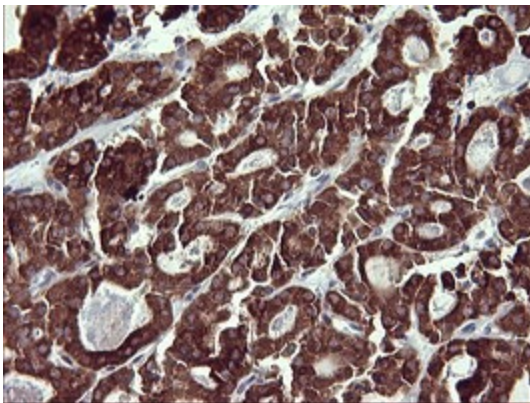
Immunohistochemical staining of paraffin-embedded Human Kidney tissue within the normal limits using anti-MMP13 mouse monoclonal antibody. (Heat-induced epitope retrieval by 10mM citric buffer, pH6.0, 120°C for 3min, TA506806)



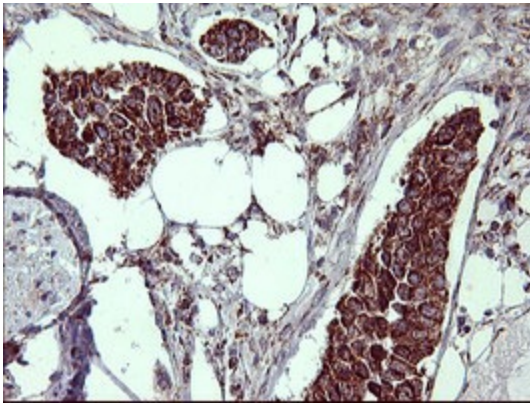
Immunohistochemical staining of paraffin-embedded Human liver tissue within the normal limits using anti-MMP13 mouse monoclonal antibody. (Heat-induced epitope retrieval by 10mM citric buffer, pH6.0, 120°C for 3min, TA506806)



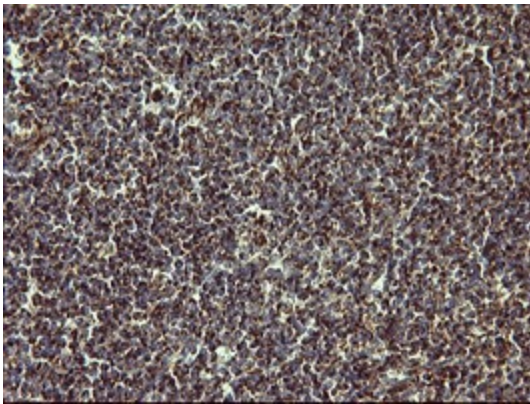
Immunohistochemical staining of paraffin-embedded Human pancreas tissue within the normal limits using anti-MMP13 mouse monoclonal antibody. (Heat-induced epitope retrieval by 10mM citric buffer, pH6.0, 120°C for 3min, TA506806)



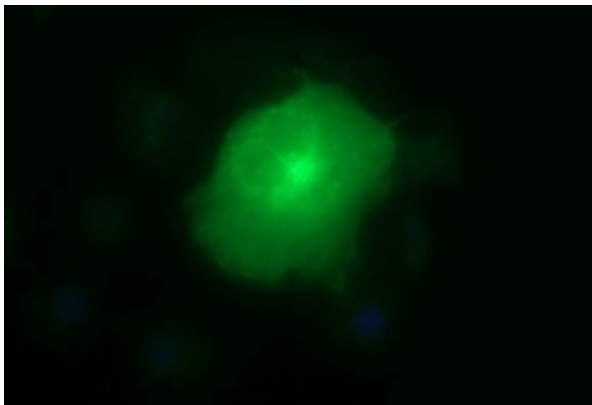
Immunohistochemical staining of paraffin-embedded Carcinoma of Human thyroid tissue using anti-MMP13 mouse monoclonal antibody. (Heat-induced epitope retrieval by 10mM citric buffer, pH6.0, 120°C for 3min, TA506806)



Immunohistochemical staining of paraffin-embedded Carcinoma of Human bladder tissue using anti-MMP13 mouse monoclonal antibody. (Heat-induced epitope retrieval by 10mM citric buffer, pH6.0, 120°C for 3min, TA506806)



Immunohistochemical staining of paraffin-embedded Human lymph node tissue within the normal limits using anti-MMP13 mouse monoclonal antibody. (Heat-induced epitope retrieval by 10mM citric buffer, pH6.0, 120°C for 3min, TA506806)



Anti-MMP13 mouse monoclonal antibody (TA506806) immunofluorescent staining of COS7 cells transiently transfected by pCMV6-ENTRY MMP13 ([RC224156]).