

Product datasheet for **TA506804**

MMP13 Mouse Monoclonal Antibody [Clone ID: OTI4B7]

Product data:

Product Type:	Primary Antibodies
Clone Name:	OTI4B7
Applications:	IF, WB
Recommended Dilution:	WB 1:2000, IF 1:100
Reactivity:	Human, Mouse, Rat
Host:	Mouse
Isotype:	IgG1
Clonality:	Monoclonal
Immunogen:	Human recombinant protein fragment corresponding to amino acids 104-471 of human MMP13(NP_002418) produced in HEK293T cell.
Formulation:	PBS (pH 7.3) containing 1% BSA, 50% glycerol and 0.02% sodium azide.
Concentration:	1 mg/ml
Purification:	Purified from mouse ascites fluids or tissue culture supernatant by affinity chromatography (protein A/G)
Conjugation:	Unconjugated
Storage:	Store at -20°C as received.
Stability:	Stable for 12 months from date of receipt.
Predicted Protein Size:	42.2 kDa
Gene Name:	matrix metalloproteinase 13
Database Link:	NP_002418 Entrez Gene 17386 Mouse Entrez Gene 171052 Rat Entrez Gene 4322 Human P45452



[View online »](#)

Background:

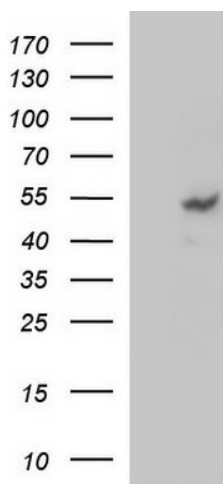
Proteins of the matrix metalloproteinase (MMP) family are involved in the breakdown of extracellular matrix in normal physiological processes, such as embryonic development, reproduction, and tissue remodeling, as well as in disease processes, such as arthritis and metastasis. Most MMP's are secreted as inactive proproteins which are activated when cleaved by extracellular proteinases. The protein encoded by this gene cleaves type II collagen more efficiently than types I and III. It may be involved in articular cartilage turnover and cartilage pathophysiology associated with osteoarthritis. The gene is part of a cluster of MMP genes which localize to chromosome 11q22.3. [provided by RefSeq, Jul 2008]

Synonyms:

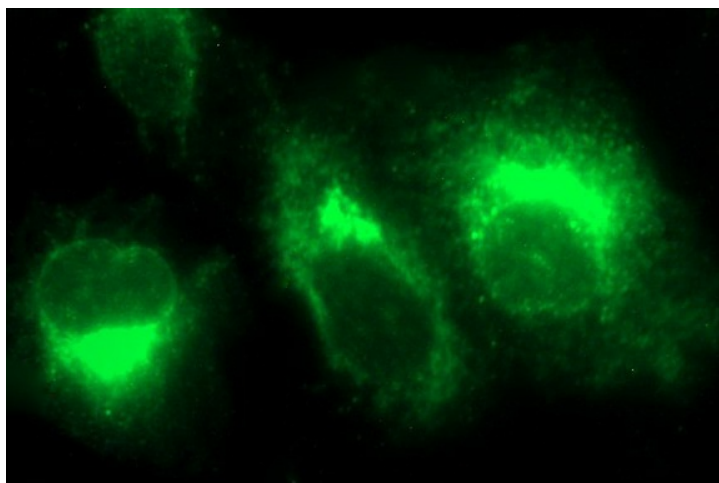
CLG3; MANDP1; MDST; MMP-13

Protein Families:

Druggable Genome, Protease

Product images:

HEK293T cells were transfected with the pCMV6-ENTRY control (Left lane) or pCMV6-ENTRY MMP13 ([RC224156], Right lane) cDNA for 48 hrs and lysed. Equivalent amounts of cell lysates (5 ug per lane) were separated by SDS-PAGE and immunoblotted with anti-MMP13. Positive lysates [LY400869] (100ug) and [LC400869] (20ug) can be purchased separately from OriGene.



Anti-MMP13 mouse monoclonal antibody (TA506804) immunofluorescent staining of COS7 cells transiently transfected by pCMV6-ENTRY MMP13 ([RC224156]).