

Product datasheet for **TA506802AM**

IL1 Receptor II (IL1R2) Mouse Monoclonal Antibody (Biotin conjugated) [Clone ID: OTI3C6]

Product data:

Product Type:	Primary Antibodies
Clone Name:	OTI3C6
Applications:	WB
Recommended Dilution:	WB 1:1000
Reactivity:	Human
Host:	Mouse
Isotype:	IgG1
Clonality:	Monoclonal
Immunogen:	Full length human recombinant protein of human IL1R2(NP_004624) produced in HEK293T cell.
Formulation:	PBS (pH 7.3) containing 1% BSA, 50% glycerol and 0.02% sodium azide.
Concentration:	0.5 mg/ml
Purification:	Purified from mouse ascites fluids or tissue culture supernatant by affinity chromatography (protein A/G)
Conjugation:	Biotin
Storage:	Store at -20°C as received.
Stability:	Stable for 12 months from date of receipt.
Predicted Protein Size:	43.9 kDa
Gene Name:	interleukin 1 receptor type 2
Database Link:	NP_004624 Entrez Gene 7850 Human P27930



[View online »](#)

Background:

The protein encoded by this gene is a cytokine receptor that belongs to the interleukin 1 receptor family. This protein binds interleukin alpha (IL1A), interleukin beta (IL1B), and interleukin 1 receptor, type I (IL1R1/IL1RA), and acts as a decoy receptor that inhibits the activity of its ligands. Interleukin 4 (IL4) is reported to antagonize the activity of interleukin 1 by inducing the expression and release of this cytokine. This gene and three other genes form a cytokine receptor gene cluster on chromosome 2q12. Alternative splicing results in multiple transcript variants and protein isoforms. Alternative splicing produces both membrane-bound and soluble proteins. A soluble protein is also produced by proteolytic cleavage. [provided by RefSeq, May 2012]

Synonyms:

CD121b; CDw121b; IL-1R-2; IL-1RT-2; IL-1RT2; IL1R2c; IL1RB

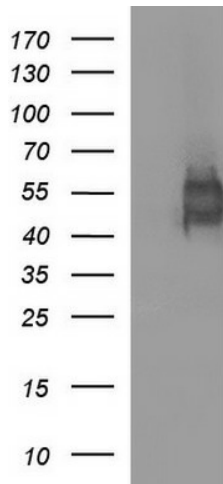
Protein Families:

Druggable Genome, Transmembrane

Protein Pathways:

Cytokine-cytokine receptor interaction, Hematopoietic cell lineage, MAPK signaling pathway

Product images:



HEK293T cells were transfected with the pCMV6-ENTRY control (Cat# [PS100001], Left lane) or pCMV6-ENTRY IL1R2 (Cat# [RC221860], Right lane) cDNA for 48 hrs and lysed. Equivalent amounts of cell lysates (5 ug per lane) were separated by SDS-PAGE and immunoblotted with anti-IL1R2 (Cat# [TA506802]). Positive lysates [LY401469] (100ug) and [LC401469] (20ug) can be purchased separately from OriGene.