

Product datasheet for **TA506794M**

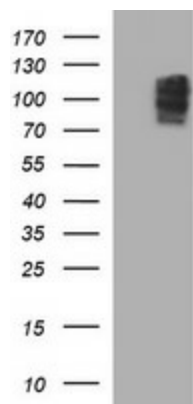
Neurofilament (NEFM) Mouse Monoclonal Antibody [Clone ID: OTI2C4]

Product data:

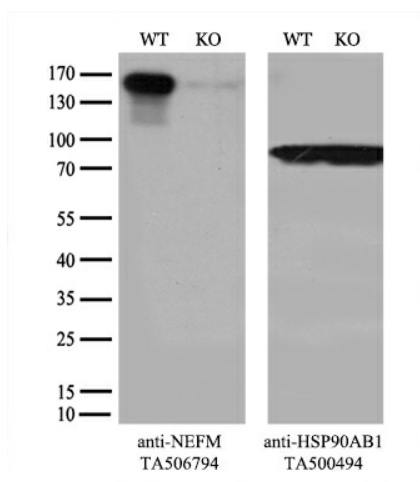
Product Type:	Primary Antibodies
Clone Name:	OTI2C4
Applications:	IF, WB
Recommended Dilution:	WB 1:4000, IF 1:100
Reactivity:	Human
Host:	Mouse
Isotype:	IgG1
Clonality:	Monoclonal
Immunogen:	Full length human recombinant protein of human NEFM(NP_005373) produced in HEK293T cell.
Formulation:	PBS (pH 7.3) containing 1% BSA, 50% glycerol and 0.02% sodium azide.
Concentration:	1 mg/ml
Purification:	Purified from mouse ascites fluids or tissue culture supernatant by affinity chromatography (protein A/G)
Conjugation:	Unconjugated
Storage:	Store at -20°C as received.
Stability:	Stable for 12 months from date of receipt.
Predicted Protein Size:	102.3 kDa
Gene Name:	neurofilament medium chain
Database Link:	NP_005373 Entrez Gene 4741 Human P07197
Synonyms:	NEF3; NF-M; NFM
Protein Pathways:	Amyotrophic lateral sclerosis (ALS)

[View online »](#)

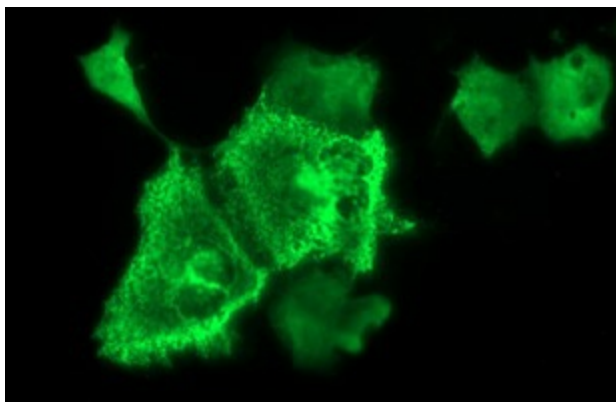
Product images:



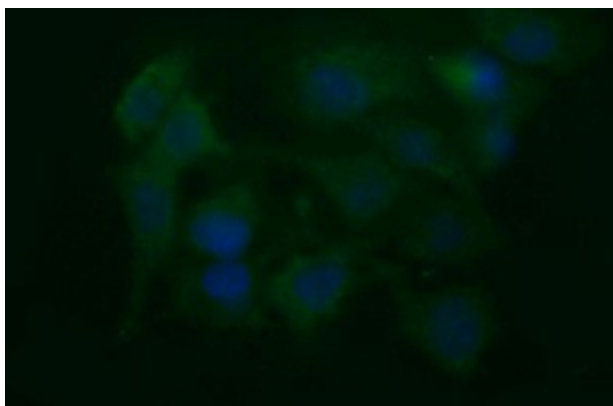
HEK293T cells were transfected with the pCMV6-ENTRY control (Left lane) or pCMV6-ENTRY NEFM ([RC224475], Right lane) cDNA for 48 hrs and lysed. Equivalent amounts of cell lysates (5 ug per lane) were separated by SDS-PAGE and immunoblotted with anti-NEFM. Positive lysates [LY417338] (100ug) and [LC417338] (20ug) can be purchased separately from OriGene.



Equivalent amounts of cell lysates (10 ug per lane) of wild-type 293T cells (WT, Cat# LC810293T) and NEFM-Knockout 293T cells (KO, Cat# [LC810526]) were separated by SDS-PAGE and immunoblotted with anti-NEFM monoclonal antibody [TA506794], (1:5000). Then the blotted membrane was stripped and reprobed with anti-HSP90AB1 antibody ([TA500494]) as a loading control.



Anti-NEFM mouse monoclonal antibody ([TA506794]) immunofluorescent staining of COS7 cells transiently transfected by pCMV6-ENTRY NEFM ([RC224475]).



Immunofluorescent staining of HeLa cells using anti-NEFM mouse monoclonal antibody ([TA506794]).