

## Product datasheet for **TA506793S**

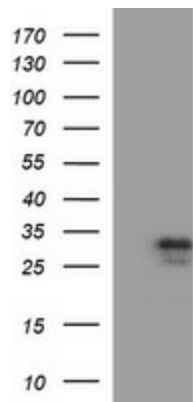
### Placental lactogen (CSH1) Mouse Monoclonal Antibody [Clone ID: OTI3C8]

#### Product data:

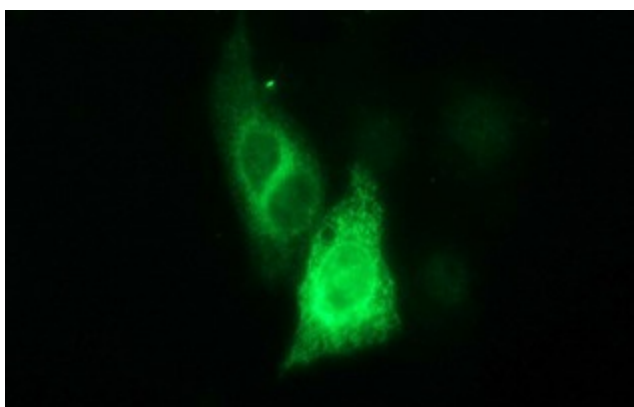
|                         |   |
|-------------------------|---|
| Product Type:           | Primary Antibodies  |
| Clone Name:             | OTI3C8  |
| Applications:           | IF, WB  |
| Recommended Dilution:   | WB 1:1000   |
| Reactivity:             | Human   |
| Host:                   | Mouse   |
| Isotype:                | IgG1  |
| Clonality:              | Monoclonal  |
| Immunogen:              | Full length human recombinant protein of human CSH1(NP_072166) produced in HEK293T cell.                  |
| Formulation:            | PBS (pH 7.3) containing 1% BSA, 50% glycerol and 0.02% sodium azide.                                      |
| Concentration:          | 1 mg/ml   |
| Purification:           | Purified from mouse ascites fluids or tissue culture supernatant by affinity chromatography (protein A/G) |
| Conjugation:            | Unconjugated  |
| Storage:                | Store at -20°C as received.   |
| Stability:              | Stable for 12 months from date of receipt.  |
| Predicted Protein Size: | 28.6 kDa  |
| Gene Name:              | chorionic somatomammotropin hormone 1   |
| Database Link:          | <a href="#">NP_072166</a><br><a href="#">Entrez Gene 1442 Human</a><br><a href="#">P0DML2</a>             |
| Synonyms:               | CSA; CSH2; CSMT; FLJ75407; PL   |
| Protein Families:       | Druggable Genome  |
| Protein Pathways:       | Jak-STAT signaling pathway, Neuroactive ligand-receptor interaction                                       |



[View online »](#)

**Product images:**

HEK293T cells were transfected with the pCMV6-ENTRY control (Left lane) or pCMV6-ENTRY CSH1 ([RC223244], Right lane) cDNA for 48 hrs and lysed. Equivalent amounts of cell lysates (5 ug per lane) were separated by SDS-PAGE and immunoblotted with anti-CSH1. Positive lysates [LY411615] (100ug) and [LC411615] (20ug) can be purchased separately from OriGene.



Anti-CSH1 mouse monoclonal antibody ([TA506793]) immunofluorescent staining of COS7 cells transiently transfected by pCMV6-ENTRY CSH1 ([RC223244]).