

Product datasheet for **TA506791M**

Placental lactogen (CSH1) Mouse Monoclonal Antibody [Clone ID: OTI2E8]

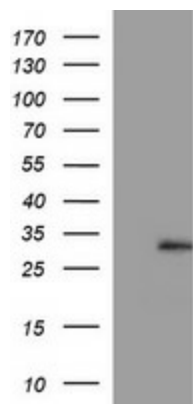
Product data:

Product Type:	Primary Antibodies
Clone Name:	OTI2E8
Applications:	IF, WB
Recommended Dilution:	WB 1:4000
Reactivity:	Human
Host:	Mouse
Isotype:	IgG1
Clonality:	Monoclonal
Immunogen:	Full length human recombinant protein of human CSH1(NP_072166) produced in HEK293T cell.
Formulation:	PBS (pH 7.3) containing 1% BSA, 50% glycerol and 0.02% sodium azide.
Concentration:	1 mg/ml
Purification:	Purified from mouse ascites fluids or tissue culture supernatant by affinity chromatography (protein A/G)
Conjugation:	Unconjugated
Storage:	Store at -20°C as received.
Stability:	Stable for 12 months from date of receipt.
Predicted Protein Size:	28.6 kDa
Gene Name:	chorionic somatomammotropin hormone 1
Database Link:	NP_072166 Entrez Gene 1442 Human P0DML2
Synonyms:	CSA; CSH2; CSMT; FLJ75407; PL
Protein Families:	Druggable Genome
Protein Pathways:	Jak-STAT signaling pathway, Neuroactive ligand-receptor interaction

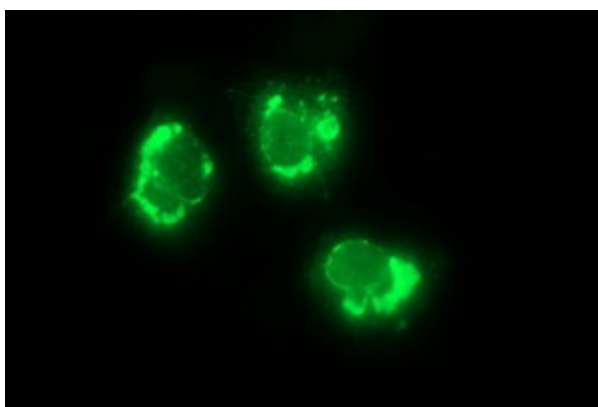


[View online »](#)

Product images:



HEK293T cells were transfected with the pCMV6-ENTRY control (Left lane) or pCMV6-ENTRY CSH1 ([RC223244], Right lane) cDNA for 48 hrs and lysed. Equivalent amounts of cell lysates (5 ug per lane) were separated by SDS-PAGE and immunoblotted with anti-CSH1. Positive lysates [LY411615] (100ug) and [LC411615] (20ug) can be purchased separately from OriGene.



Anti-CSH1 mouse monoclonal antibody ([TA506791]) immunofluorescent staining of COS7 cells transiently transfected by pCMV6-ENTRY CSH1 ([RC223244]).