

## Product datasheet for **TA506769M**

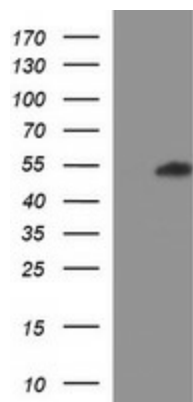
### **RPiP8 (RUNDC3A) Mouse Monoclonal Antibody [Clone ID: OTI3C6]**

#### **Product data:**

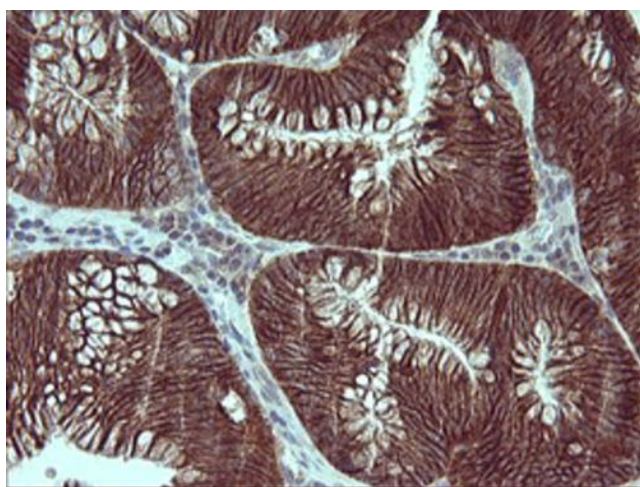
Product Type:	Primary Antibodies
Clone Name:	OTI3C6
Applications:	IHC, WB
Recommended Dilution:	WB 1:1000, IHC: 1:150
Reactivity:	Human, Mouse, Rat
Host:	Mouse
Isotype:	IgG1
Clonality:	Monoclonal
Immunogen:	Full length human recombinant protein of human RUNDC3A(NP_006686) produced in HEK293T cell.
Formulation:	PBS (pH 7.3) containing 1% BSA, 50% glycerol and 0.02% sodium azide.
Concentration:	1 mg/ml
Purification:	Purified from mouse ascites fluids or tissue culture supernatant by affinity chromatography (protein A/G)
Conjugation:	Unconjugated
Storage:	Store at -20°C as received.
Stability:	Stable for 12 months from date of receipt.
Predicted Protein Size:	45.5 kDa
Gene Name:	RUN domain containing 3A
Database Link:	<a href="#">NP_006686</a> <a href="#">Entrez Gene 10900 Human</a> <a href="#">Q59EK9</a>
Synonyms:	RAP2IP; RPiP-8; RPiP8

[View online »](#)

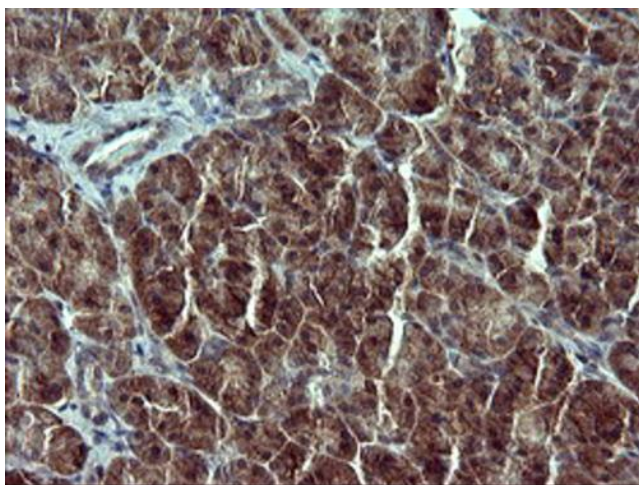
## Product images:



HEK293T cells were transfected with the pCMV6-ENTRY control (Cat# [PS100001], Left lane) or pCMV6-ENTRY RUNDC3A (Cat# [RC200211], Right lane) cDNA for 48 hrs and lysed. Equivalent amounts of cell lysates (5 ug per lane) were separated by SDS-PAGE and immunoblotted with anti-RUNDC3A (Cat# [TA506769]). Positive lysates [LY402004] (100ug) and [LC402004] (20ug) can be purchased separately from OriGene.



Immunohistochemical staining of paraffin-embedded Adenocarcinoma of Human colon tissue using anti-RUNDC3A mouse monoclonal antibody. ([TA506769]). Heat-induced epitope retrieval by EDTA solution buffer pH 8.0 at 120°C for 3 min.



Immunohistochemical staining of paraffin-embedded Human pancreas tissue within the normal limits using anti-RUNDC3A mouse monoclonal antibody. ([TA506769]). Heat-induced epitope retrieval by EDTA solution buffer pH 8.0 at 120°C for 3 min.