

## Product datasheet for **TA506766AM**

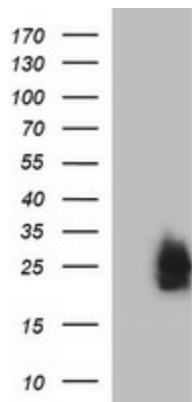
### **BID Mouse Monoclonal Antibody (Biotin conjugated) [Clone ID: OTI3E9]**

#### **Product data:**

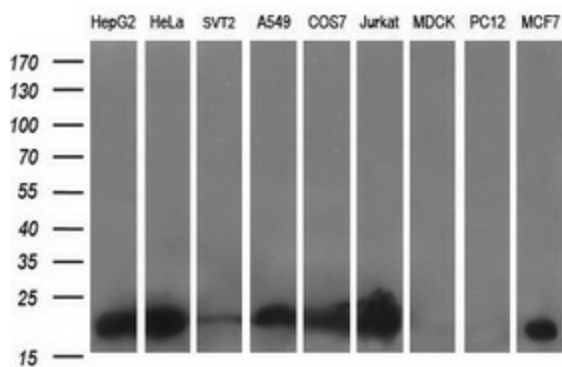
<b>Product Type:</b>	Primary Antibodies
<b>Clone Name:</b>	OTI3E9
<b>Applications:</b>	IF, IHC, WB
<b>Recommended Dilution:</b>	WB 1:400~4000, IHC 1:150, IF 1:100
<b>Reactivity:</b>	Human, Monkey, Mouse
<b>Host:</b>	Mouse
<b>Isotype:</b>	IgG2a
<b>Clonality:</b>	Monoclonal
<b>Immunogen:</b>	Full length human recombinant protein of human BID(NP_001187) produced in HEK293T cell.
<b>Formulation:</b>	PBS (pH 7.3) containing 1% BSA, 50% glycerol and 0.02% sodium azide.
<b>Concentration:</b>	0.5 mg/ml
<b>Purification:</b>	Purified from mouse ascites fluids or tissue culture supernatant by affinity chromatography (protein A/G)
<b>Conjugation:</b>	Biotin
<b>Storage:</b>	Store at -20°C as received.
<b>Stability:</b>	Stable for 12 months from date of receipt.
<b>Predicted Protein Size:</b>	21.8 kDa
<b>Gene Name:</b>	BH3 interacting domain death agonist
<b>Database Link:</b>	<a href="#">NP_001187</a> <a href="#">Entrez Gene 12122 Mouse</a> <a href="#">Entrez Gene 100426724 Monkey</a> <a href="#">Entrez Gene 637 Human</a> <a href="#">P55957</a>
<b>Synonyms:</b>	FP497
<b>Protein Families:</b>	Druggable Genome
<b>Protein Pathways:</b>	Alzheimer's disease, Amyotrophic lateral sclerosis (ALS), Apoptosis, Natural killer cell mediated cytotoxicity, p53 signaling pathway, Pathways in cancer, Viral myocarditis



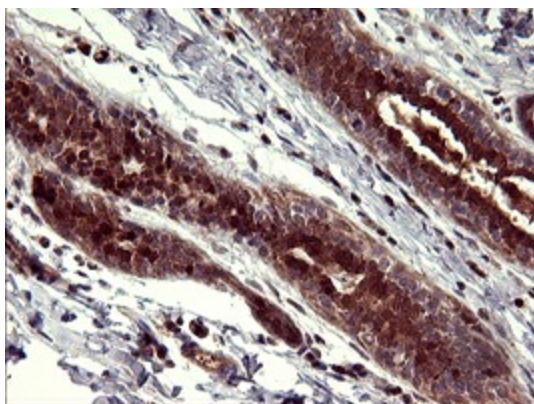
[View online »](#)

**Product images:**


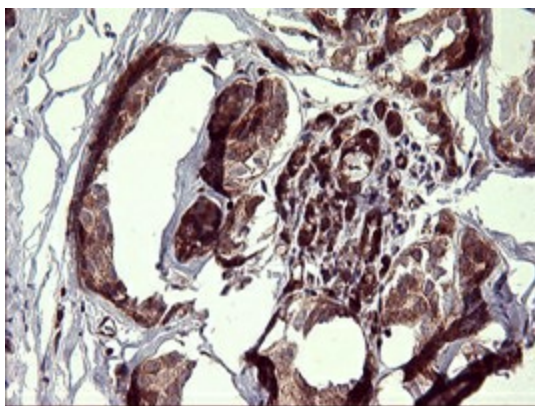
HEK293T cells were transfected with the pCMV6-ENTRY control (Cat# [PS100001], Left lane) or pCMV6-ENTRY BID (Cat# [RC207261], Right lane) cDNA for 48 hrs and lysed. Equivalent amounts of cell lysates (5 ug per lane) were separated by SDS-PAGE and immunoblotted with anti-BID (Cat# [TA506766]). Positive lysates [LY420074] (100ug) and [LC420074] (20ug) can be purchased separately from OriGene.



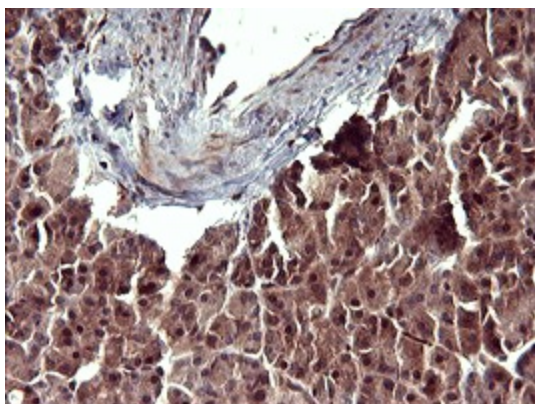
Western blot analysis of extracts (35ug) from 9 different cell lines by using anti-BID monoclonal antibody (HepG2: human; HeLa: human; SVT2: mouse; A549: human; COS7: monkey; Jurkat: human; MDCK: canine; PC12: rat; MCF7: human).



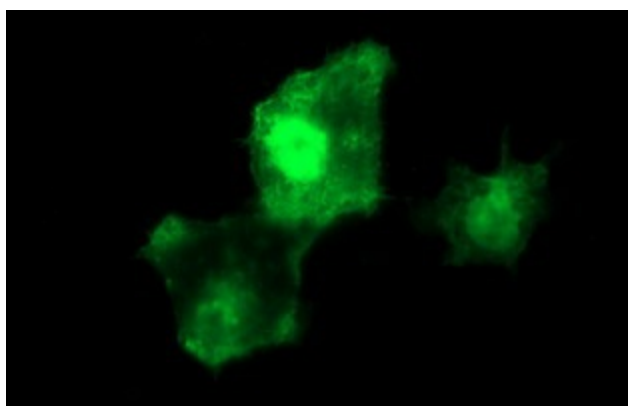
Immunohistochemical staining of paraffin-embedded Human breast tissue within the normal limits using anti-BID mouse monoclonal antibody. (Heat-induced epitope retrieval by 10mM citric buffer, pH6.0, 120°C for 3min, [TA506766])



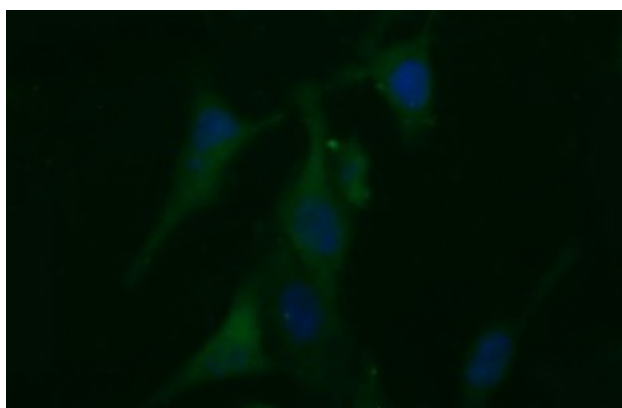
Immunohistochemical staining of paraffin-embedded Adenocarcinoma of Human breast tissue using anti-BID mouse monoclonal antibody. (Heat-induced epitope retrieval by 10mM citric buffer, pH6.0, 120°C for 3min, [TA506766])



Immunohistochemical staining of paraffin-embedded Human pancreas tissue within the normal limits using anti-BID mouse monoclonal antibody. (Heat-induced epitope retrieval by 10mM citric buffer, pH6.0, 120°C for 3min, [TA506766])



Anti-BID mouse monoclonal antibody ([TA506766]) immunofluorescent staining of COS7 cells transiently transfected by pCMV6-ENTRY BID ([RC207261]).



Immunofluorescent staining of HeLa cells using anti-BID mouse monoclonal antibody ([TA506766]).