

Product datasheet for **TA506752AM**

ARG2 Mouse Monoclonal Antibody (Biotin conjugated) [Clone ID: OTI1F6]

Product data:

Product Type:	Primary Antibodies
Clone Name:	OTI1F6
Applications:	WB
Recommended Dilution:	WB 1:4000
Reactivity:	Human
Host:	Mouse
Isotype:	IgG2b
Clonality:	Monoclonal
Immunogen:	Full length human recombinant protein of human ARG2(NP_001163) produced in HEK293T cell.
Formulation:	PBS (pH 7.3) containing 1% BSA, 50% glycerol and 0.02% sodium azide.
Concentration:	0.5 mg/ml
Purification:	Purified from mouse ascites fluids or tissue culture supernatant by affinity chromatography (protein A/G)
Conjugation:	Biotin
Storage:	Store at -20°C as received.
Stability:	Stable for 12 months from date of receipt.
Gene Name:	arginase 2
Database Link:	NP_001163 Entrez Gene 384 Human P78540



[View online »](#)

Background:

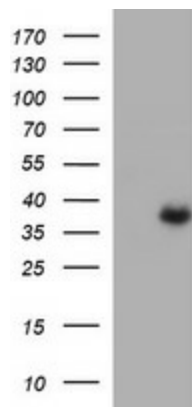
Arginase catalyzes the hydrolysis of arginine to ornithine and urea. At least two isoforms of mammalian arginase exists (types I and II) which differ in their tissue distribution, subcellular localization, immunologic crossreactivity and physiologic function. The type II isoform encoded by this gene, is located in the mitochondria and expressed in extra-hepatic tissues, especially kidney. The physiologic role of this isoform is poorly understood; it is thought to play a role in nitric oxide and polyamine metabolism. Transcript variants of the type II gene resulting from the use of alternative polyadenylation sites have been described. [provided by RefSeq, Jul 2008]

Synonyms:

arginase; arginase 2; kidney arginase; L-arginine amidinohydrolase; L-arginine ureahydrolase; nonhepatic arginase; type II

Protein Pathways:

Arginine and proline metabolism, Metabolic pathways

Product images:

HEK293T cells were transfected with the pCMV6-ENTRY control (Left lane) or pCMV6-ENTRY ARG2 ([RC206756], Right lane) cDNA for 48 hrs and lysed. Equivalent amounts of cell lysates (5 ug per lane) were separated by SDS-PAGE and immunoblotted with anti-ARG2. Positive lysates [LY420091] (100ug) and [LC420091] (20ug) can be purchased separately from OriGene.