

## Product datasheet for **TA506751**

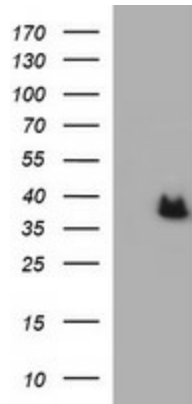
### ARG2 Mouse Monoclonal Antibody [Clone ID: OTI3G5]

#### Product data:

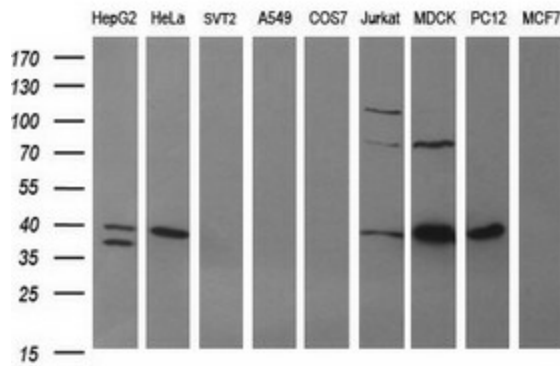
|                         |   |
|-------------------------|---|
| Product Type:           | Primary Antibodies  |
| Clone Name:             | OTI3G5  |
| Applications:           | IF, IHC, WB   |
| Recommended Dilution:   | WB 1:400~4000, IHC 1:150, IF 1:100  |
| Reactivity:             | Human, Dog, Rat   |
| Host:                   | Mouse   |
| Isotype:                | IgG1  |
| Clonality:              | Monoclonal  |
| Immunogen:              | Full length human recombinant protein of human ARG2(NP_001163) produced in HEK293T cell.  |
| Formulation:            | PBS (pH 7.3) containing 1% BSA, 50% glycerol and 0.02% sodium azide.  |
| Concentration:          | 1 mg/ml   |
| Purification:           | Purified from mouse ascites fluids or tissue culture supernatant by affinity chromatography (protein A/G)   |
| Conjugation:            | Unconjugated  |
| Storage:                | Store at -20°C as received.   |
| Stability:              | Stable for 12 months from date of receipt.  |
| Predicted Protein Size: | 36 kDa  |
| Gene Name:              | arginase 2  |
| Database Link:          | <a href="#">NP_001163</a><br><a href="#">Entrez Gene 29215 Rat</a> <a href="#">Entrez Gene 480364 Dog</a> <a href="#">Entrez Gene 384 Human</a><br><a href="#">P78540</a> |
| Synonyms:               | arginase; arginase 2; kidney arginase; L-arginine amidinohydrolase; L-arginine ureahydrolase; nonhepatic arginase; type II  |
| Protein Pathways:       | Arginine and proline metabolism, Metabolic pathways   |



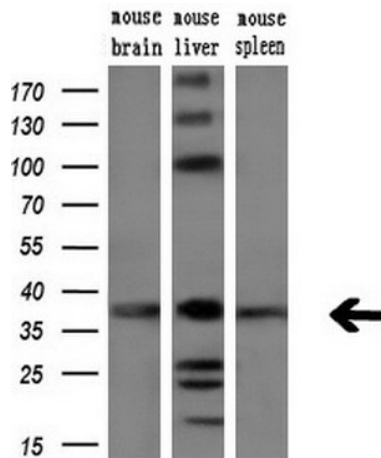
[View online »](#)

**Product images:**


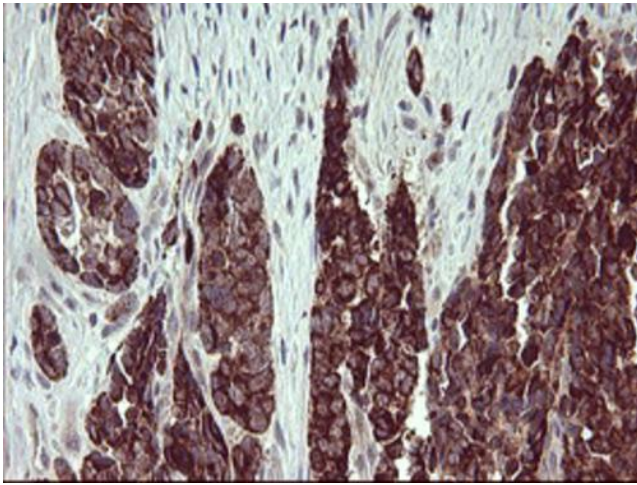
HEK293T cells were transfected with the pCMV6-ENTRY control (Cat# [PS100001], Left lane) or pCMV6-ENTRY ARG2 (Cat# [RC206756], Right lane) cDNA for 48 hrs and lysed. Equivalent amounts of cell lysates (5 ug per lane) were separated by SDS-PAGE and immunoblotted with anti-ARG2(Cat# TA506751). Positive lysates [LY420091] (100ug) and [LC420091] (20ug) can be purchased separately from OriGene.



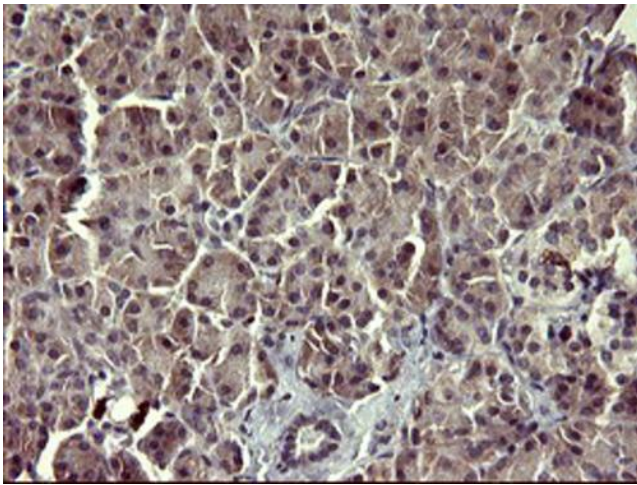
Western blot analysis of extracts (35ug) from 9 different cell lines by using anti-ARG2 monoclonal antibody (HepG2: human; HeLa: human; SVT2: mouse; A549: human; COS7: monkey; Jurkat: human; MDCK: canine; PC12: rat; MCF7: human).



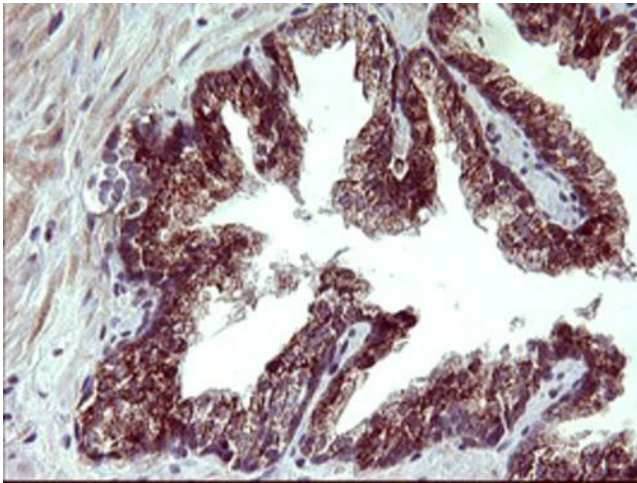
Western blot analysis of extracts (10ug) from 3 different mouse tissues by using anti-ARG2 monoclonal antibody (1:200).



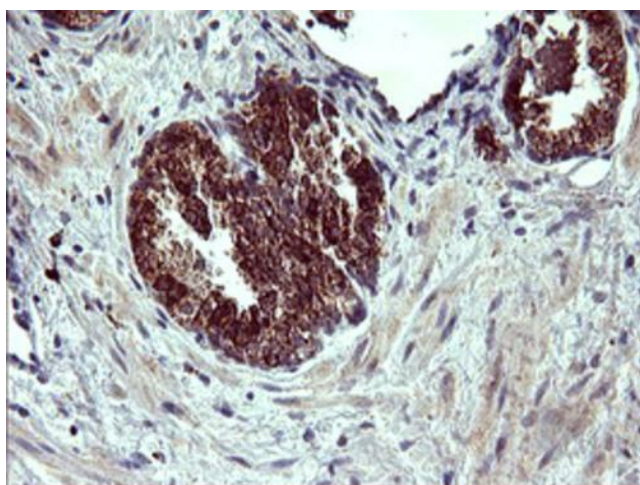
Immunohistochemical staining of paraffin-embedded Adenocarcinoma of Human colon tissue using anti-ARG2 mouse monoclonal antibody. Heat-induced epitope retrieval by EDTA solution buffer pH 8.0 at 120°C for 3 min.



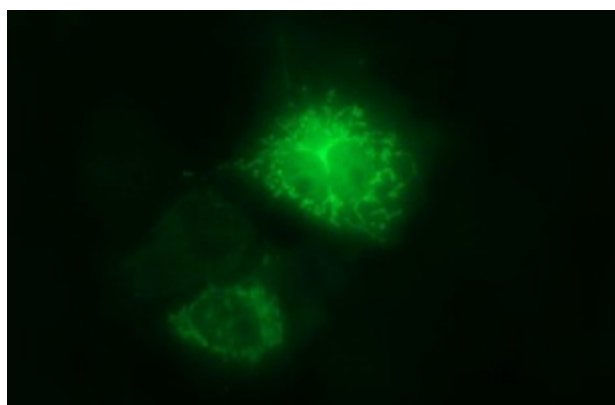
Immunohistochemical staining of paraffin-embedded Human pancreas tissue within the normal limits using anti-ARG2 mouse monoclonal antibody. Heat-induced epitope retrieval by EDTA solution buffer pH 8.0 at 120°C for 3 min.



Immunohistochemical staining of paraffin-embedded Human prostate tissue within the normal limits using anti-ARG2 mouse monoclonal antibody. Heat-induced epitope retrieval by EDTA solution buffer pH 8.0 at 120°C for 3 min.



Immunohistochemical staining of paraffin-embedded Carcinoma of Human prostate tissue using anti-ARG2 mouse monoclonal antibody. Heat-induced epitope retrieval by EDTA solution buffer pH 8.0 at 120°C for 3 min.



Anti-ARG2 mouse monoclonal antibody (TA506751) immunofluorescent staining of COS7 cells transiently transfected by pCMV6-ENTRY ARG2 ([RC206756]).