

## Product datasheet for **TA506746AM**

### CD44 Mouse Monoclonal Antibody (Biotin conjugated) [Clone ID: OTI5E6]

#### Product data:

|                         |   |
|-------------------------|---|
| Product Type:           | Primary Antibodies  |
| Clone Name:             | OTI5E6  |
| Applications:           | WB  |
| Recommended Dilution:   | WB 1:4000   |
| Reactivity:             | Human   |
| Host:                   | Mouse   |
| Isotype:                | IgG2a   |
| Clonality:              | Monoclonal  |
| Immunogen:              | Full length human recombinant protein of human CD44(NP_000601) produced in HEK293T cell.                  |
| Formulation:            | PBS (pH 7.3) containing 1% BSA, 50% glycerol and 0.02% sodium azide.                                      |
| Concentration:          | 0.5 mg/ml   |
| Purification:           | Purified from mouse ascites fluids or tissue culture supernatant by affinity chromatography (protein A/G) |
| Conjugation:            | Biotin  |
| Storage:                | Store at -20°C as received.   |
| Stability:              | Stable for 12 months from date of receipt.  |
| Predicted Protein Size: | 79.2 kDa  |
| Gene Name:              | CD44 molecule (Indian blood group)  |
| Database Link:          | <a href="#">NP_000601</a><br><a href="#">Entrez Gene 960 Human</a><br><a href="#">P16070</a>              |



[View online »](#)

**Background:**

The protein encoded by this gene is a cell-surface glycoprotein involved in cell-cell interactions, cell adhesion and migration. It is a receptor for hyaluronic acid (HA) and can also interact with other ligands, such as osteopontin, collagens, and matrix metalloproteinases (MMPs). This protein participates in a wide variety of cellular functions including lymphocyte activation, recirculation and homing, hematopoiesis, and tumor metastasis. Transcripts for this gene undergo complex alternative splicing that results in many functionally distinct isoforms, however, the full length nature of some of these variants has not been determined. Alternative splicing is the basis for the structural and functional diversity of this protein, and may be related to tumor metastasis. [provided by RefSeq, Jul 2008]

**Synonyms:**

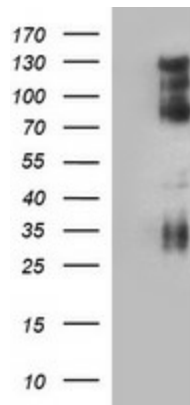
CDW44; CSPG8; ECMR-III; HCELL; HUTCH-I; IN; LHR; MC56; MDU2; MDU3; MIC4; Pgp1

**Protein Families:**

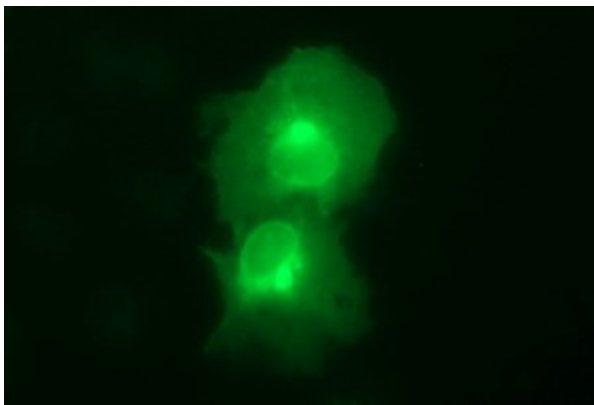
Adult stem cells, Cancer stem cells, Druggable Genome, Embryonic stem cells, ES Cell Differentiation/IPS, Stem cell relevant signaling - DSL/Notch pathway, Transmembrane

**Protein Pathways:**

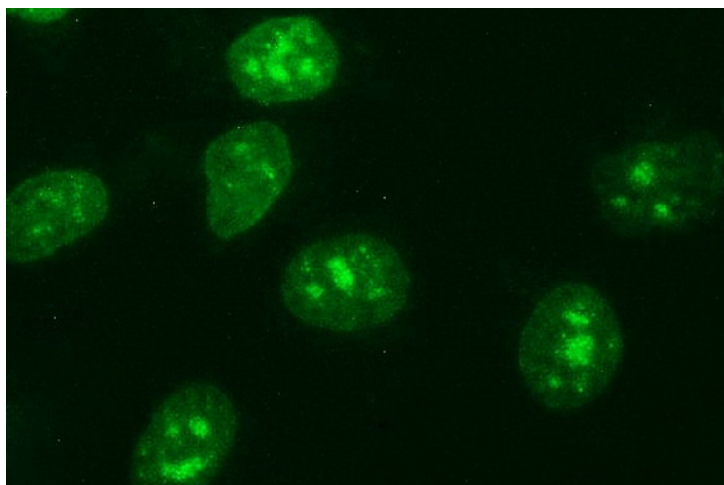
ECM-receptor interaction, Hematopoietic cell lineage

**Product images:**


HEK293T cells were transfected with the pCMV6-ENTRY control (Left lane) or pCMV6-ENTRY CD44 ([RC221771], Right lane) cDNA for 48 hrs and lysed. Equivalent amounts of cell lysates (5 ug per lane) were separated by SDS-PAGE and immunoblotted with anti-CD44. Positive lysates [LY400203] (100ug) and [LC400203] (20ug) can be purchased separately from OriGene.



Anti-CD44 mouse monoclonal antibody ([TA506746]) immunofluorescent staining of COS7 cells transiently transfected by pCMV6-ENTRY CD44 ([RC221771]).



Immunofluorescent staining of HeLa cells using anti-CD44 mouse monoclonal antibody ([TA506746]).