

Product datasheet for **TA506723**

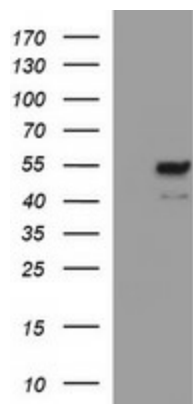
MMP13 Mouse Monoclonal Antibody [Clone ID: OTI3G1]

Product data:

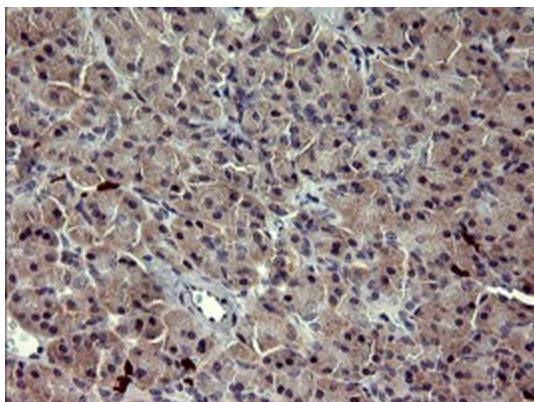
| | |
|-------------------------|---|
| Product Type: | Primary Antibodies |
| Clone Name: | OTI3G1 |
| Applications: | IF, IHC, WB |
| Recommend Dilution: | WB 1:1000, IHC 1:150, IF 1:100 |
| Reactivity: | Human |
| Host: | Mouse |
| Isotype: | IgG2a |
| Clonality: | Monoclonal |
| Immunogen: | Human recombinant protein fragment corresponding to amino acids 104-471 of human MMP13(NP_002418) produced in HEK293T cell. |
| Formulation: | PBS (PH 7.3) containing 1% BSA, 50% glycerol and 0.02% sodium azide. |
| Concentration: | 1 mg/ml |
| Purification: | Purified from mouse ascites fluids by affinity chromatography |
| Predicted Protein Size: | 42.2 kDa |
| Gene Name: | matrix metalloproteinase 13 |
| Database Link: | NP_002418 Entrez Gene 4322 Human |
| Synonyms: | CLG3; MANDP1; MDST; MMP-13 |
| Protein Families: | Druggable Genome, Protease |



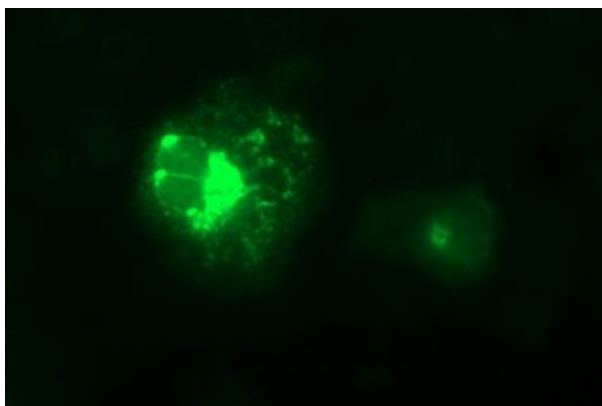
[View online »](#)

Product images:

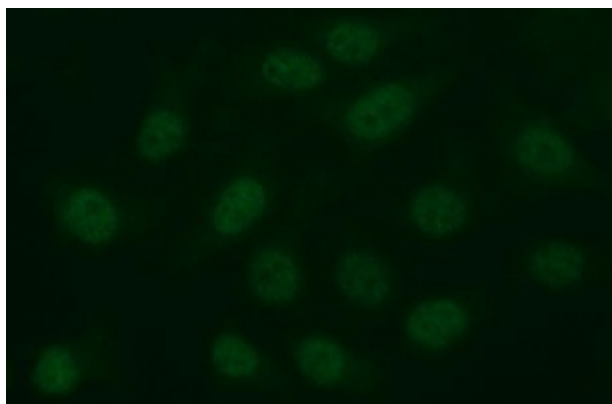
HEK293T cells were transfected with the pCMV6-ENTRY control (Left lane) or pCMV6-ENTRY MMP13 (RC224156, Right lane) cDNA for 48 hrs and lysed. Equivalent amounts of cell lysates (5 ug per lane) were separated by SDS-PAGE and immunoblotted with anti-MMP13. Positive lysates LY400869 (100ug) and LC400869 (20ug) can be purchased separately from OriGene.



Immunohistochemical staining of paraffin-embedded Human pancreas tissue within the normal limits using anti-MMP13 mouse monoclonal antibody. (Heat-induced epitope retrieval by 10mM citric buffer, pH6.0, 120°C for 3min, TA506723)



Anti-MMP13 mouse monoclonal antibody (TA506723) immunofluorescent staining of COS7 cells transiently transfected by pCMV6-ENTRY MMP13 (RC224156).



Immunofluorescent staining of HeLa cells using anti-MMP13 mouse monoclonal antibody (TA506723).