

Product datasheet for **TA506700S**

FOXP1 Mouse Monoclonal Antibody [Clone ID: OTI4D2]

Product data:

Product Type:	Primary Antibodies
Clone Name:	OTI4D2
Applications:	IF, IHC, WB
Recommended Dilution:	WB: 1:1000, IHC: 1:50-1:150, IF: 1:50-1:100
Reactivity:	Human
Host:	Mouse
Isotype:	IgG1
Clonality:	Monoclonal
Immunogen:	Full length human recombinant protein of human FOXP1(NP_116071) produced in HEK293T cell.
Formulation:	PBS (pH 7.3) containing 1% BSA, 50% glycerol and 0.02% sodium azide.
Concentration:	1 mg/ml
Purification:	Purified from mouse ascites fluids or tissue culture supernatant by affinity chromatography (protein A/G)
Conjugation:	Unconjugated
Storage:	Store at -20°C as received.
Stability:	Stable for 12 months from date of receipt.
Predicted Protein Size:	75.1 kDa
Gene Name:	forkhead box P1
Database Link:	NP_116071 Entrez Gene 27086 Human Q9H334



[View online »](#)

Background:

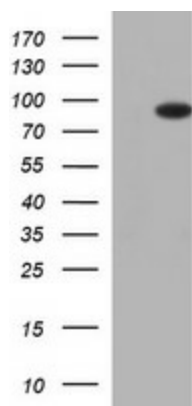
This gene belongs to subfamily P of the forkhead box (FOX) transcription factor family. Forkhead box transcription factors play important roles in the regulation of tissue- and cell type-specific gene transcription during both development and adulthood. Forkhead box P1 protein contains both DNA-binding- and protein-protein binding-domains. This gene may act as a tumor suppressor as it is lost in several tumor types and maps to a chromosomal region (3p14.1) reported to contain a tumor suppressor gene(s). Alternative splicing results in multiple transcript variants encoding different isoforms. [provided by RefSeq, Jul

Synonyms:

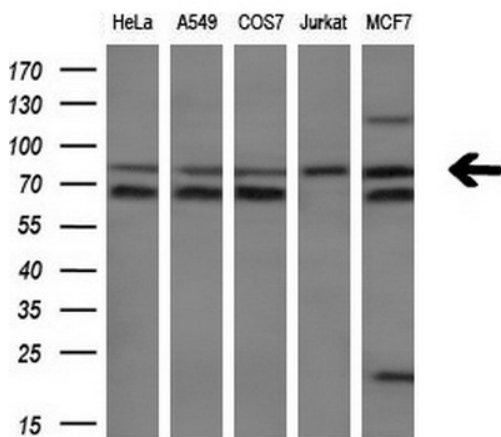
12CC4; hFKH1B; HSPC215; MFH; QRF1

Protein Families:

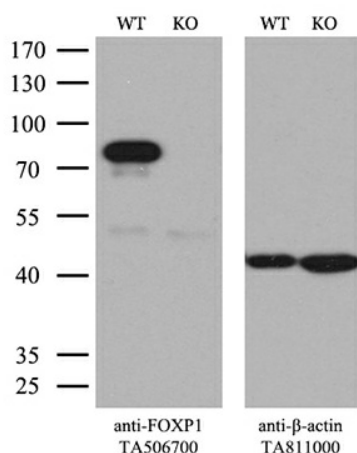
Transcription Factors

Product images:


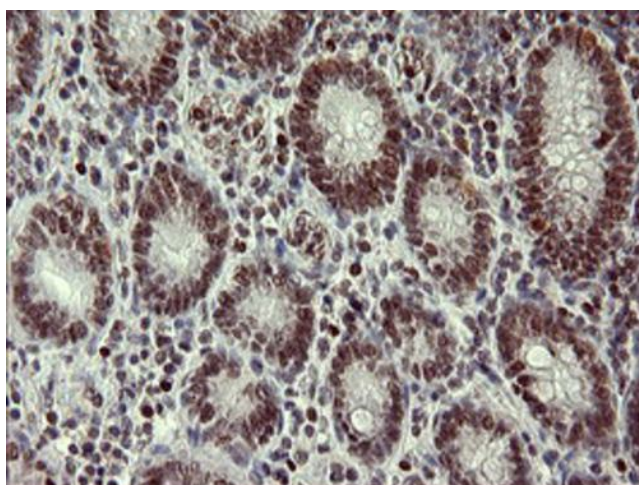
HEK293T cells were transfected with the pCMV6-ENTRY control (Left lane) or pCMV6-ENTRY FOXP1 ([RC213862], Right lane) cDNA for 48 hrs and lysed. Equivalent amounts of cell lysates (5 ug per lane) were separated by SDS-PAGE and immunoblotted with anti-FOXP1. Positive lysates [LY403191] (100ug) and [LC403191] (20ug) can be purchased separately from OriGene.



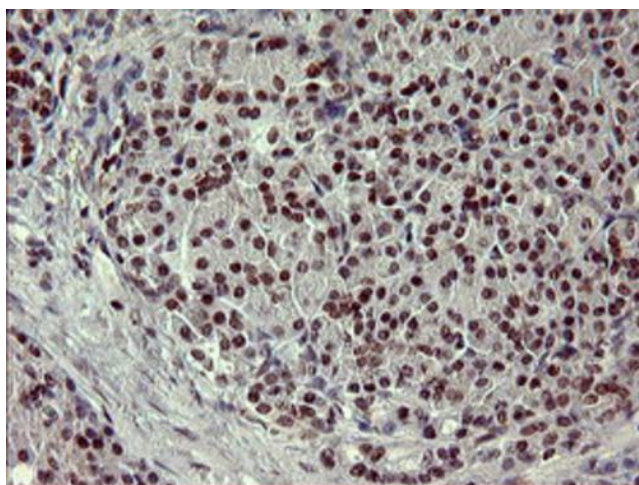
Western blot analysis of extracts (10ug) from 5 different cell lines by using anti-FOXP1 monoclonal antibody (1:200).



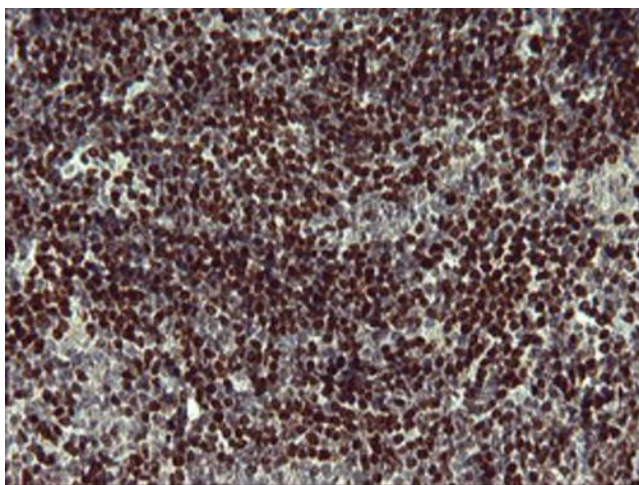
Equivalent amounts of cell lysates (10 ug per lane) of wild-type 293T cells (WT, Cat# LC810293T) and FOXP1-Knockout 293T cells (KO, Cat# [LC810347]) were separated by SDS-PAGE and immunoblotted with anti-FOXP1 monoclonal antibody [TA506700]. Then the blotted membrane was stripped and reprobed with anti-β-actin antibody ([TA811000]) as a loading control (1:500).



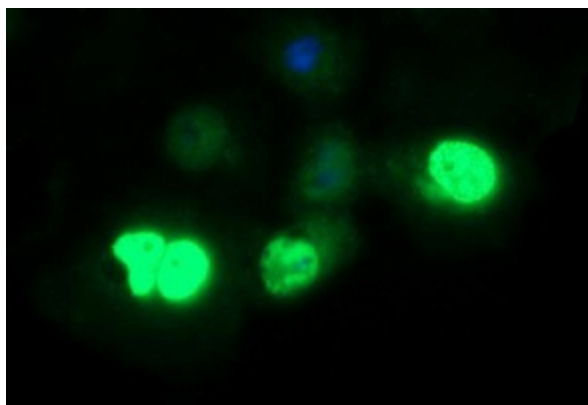
Immunohistochemical staining of paraffin-embedded Adenocarcinoma of Human colon tissue using anti-FOXP1 mouse monoclonal antibody at 1:150 ([TA506700]). Heat-induced epitope retrieval by EDTA solution buffer pH 8.0 at 120°C for 3 min.



Immunohistochemical staining of paraffin-embedded Human pancreas tissue within the normal limits using anti-FOXP1 mouse monoclonal antibody at 1:150 ([TA506700]). Heat-induced epitope retrieval by EDTA solution buffer pH 8.0 at 120°C for 3 min.



Immunohistochemical staining of paraffin-embedded Human lymphoma tissue using anti-FOXP1 mouse monoclonal antibody at 1:150 ([TA506700]). Heat-induced epitope retrieval by EDTA solution buffer pH 8.0 at 120°C for 3 min.



Anti-FOXP1 mouse monoclonal antibody ([TA506700]) immunofluorescent staining of COS7 cells transiently transfected by pCMV6-ENTRY FOXP1 ([RC213862]) at 1:100