

Product datasheet for **TA506689S**

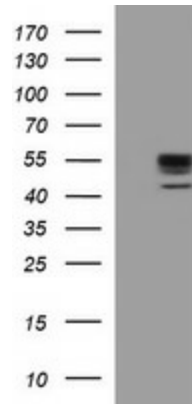
MMP13 Mouse Monoclonal Antibody [Clone ID: OTI1G5]

Product data:

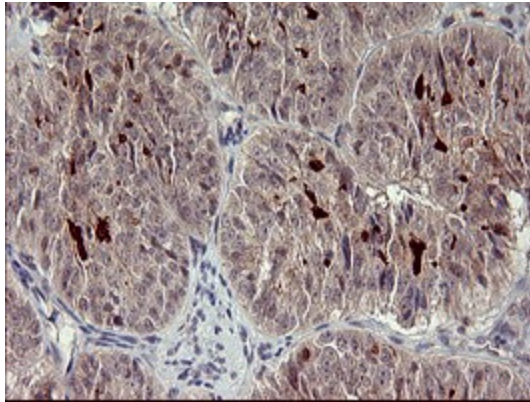
Product Type:	Primary Antibodies
Clone Name:	OTI1G5
Applications:	IF, IHC, WB
Recommended Dilution:	WB 1:1000, IHC 1:150, IF 1:100
Reactivity:	Human, Mouse, Rat
Host:	Mouse
Isotype:	IgG2a
Clonality:	Monoclonal
Immunogen:	Human recombinant protein fragment corresponding to amino acids 104-471 of human MMP13(NP_002418) produced in HEK293T cell.
Formulation:	PBS (pH 7.3) containing 1% BSA, 50% glycerol and 0.02% sodium azide.
Concentration:	1 mg/ml
Purification:	Purified from mouse ascites fluids or tissue culture supernatant by affinity chromatography (protein A/G)
Conjugation:	Unconjugated
Storage:	Store at -20°C as received.
Stability:	Stable for 12 months from date of receipt.
Predicted Protein Size:	42.2 kDa
Gene Name:	matrix metalloproteinase 13
Database Link:	NP_002418 Entrez Gene 17386 Mouse Entrez Gene 171052 Rat Entrez Gene 4322 Human P45452
Synonyms:	CLG3; MANDP1; MDST; MMP-13
Protein Families:	Druggable Genome, Protease



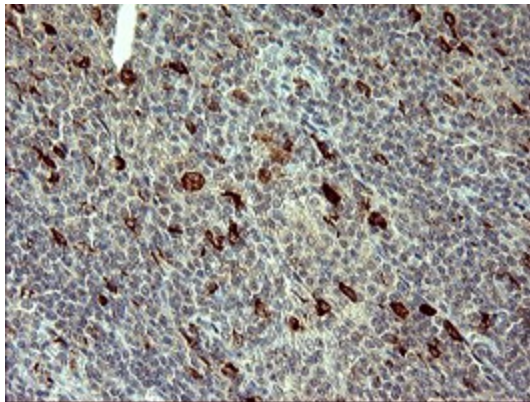
[View online »](#)

Product images:


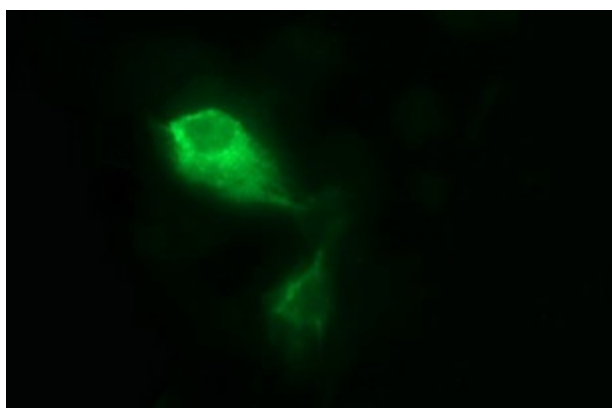
HEK293T cells were transfected with the pCMV6-ENTRY control (Left lane) or pCMV6-ENTRY MMP13 ([RC224156], Right lane) cDNA for 48 hrs and lysed. Equivalent amounts of cell lysates (5 ug per lane) were separated by SDS-PAGE and immunoblotted with anti-MMP13. Positive lysates [LY400869] (100ug) and [LC400869] (20ug) can be purchased separately from OriGene.



Immunohistochemical staining of paraffin-embedded Adenocarcinoma of Human ovary tissue using anti-MMP13 mouse monoclonal antibody. (Heat-induced epitope retrieval by 10mM citric buffer, pH6.0, 120°C for 3min, [TA506689])



Immunohistochemical staining of paraffin-embedded Human lymphoma tissue using anti-MMP13 mouse monoclonal antibody. (Heat-induced epitope retrieval by 10mM citric buffer, pH6.0, 120°C for 3min, [TA506689])



Anti-MMP13 mouse monoclonal antibody ([TA506689]) immunofluorescent staining of COS7 cells transiently transfected by pCMV6-ENTRY MMP13 ([RC224156]).