

Product datasheet for **TA506688M**

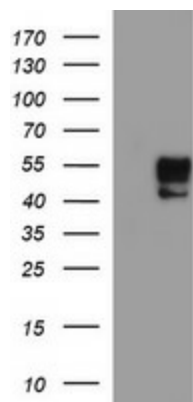
MMP13 Mouse Monoclonal Antibody [Clone ID: OT13H3]

Product data:

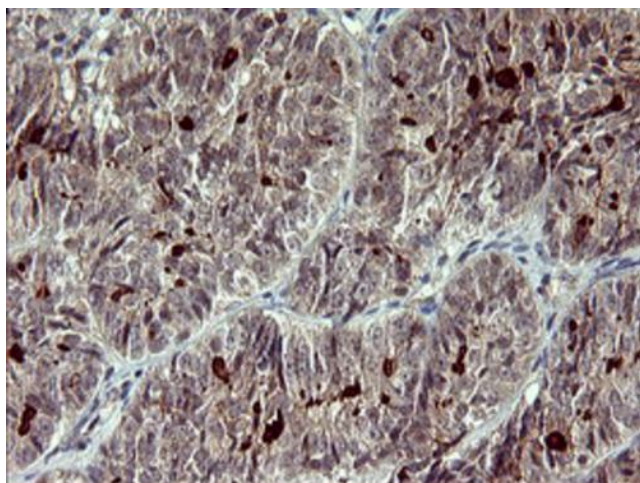
Product Type:	Primary Antibodies
Clone Name:	OT13H3
Applications:	IF, IHC, WB
Recommended Dilution:	WB 1:1000, IHC 1:150, IF 1:100
Reactivity:	Human, Mouse, Rat
Host:	Mouse
Isotype:	IgG1
Clonality:	Monoclonal
Immunogen:	Human recombinant protein fragment corresponding to amino acids 104-471 of human MMP13(NP_002418) produced in HEK293T cell.
Formulation:	PBS (pH 7.3) containing 1% BSA, 50% glycerol and 0.02% sodium azide.
Concentration:	1 mg/ml
Purification:	Purified from mouse ascites fluids or tissue culture supernatant by affinity chromatography (protein A/G)
Conjugation:	Unconjugated
Storage:	Store at -20°C as received.
Stability:	Stable for 12 months from date of receipt.
Predicted Protein Size:	42.2 kDa
Gene Name:	matrix metalloproteinase 13
Database Link:	NP_002418 Entrez Gene 17386 Mouse Entrez Gene 171052 Rat Entrez Gene 4322 Human P45452
Synonyms:	CLG3; MANDP1; MDST; MMP-13
Protein Families:	Druggable Genome, Protease


[View online »](#)

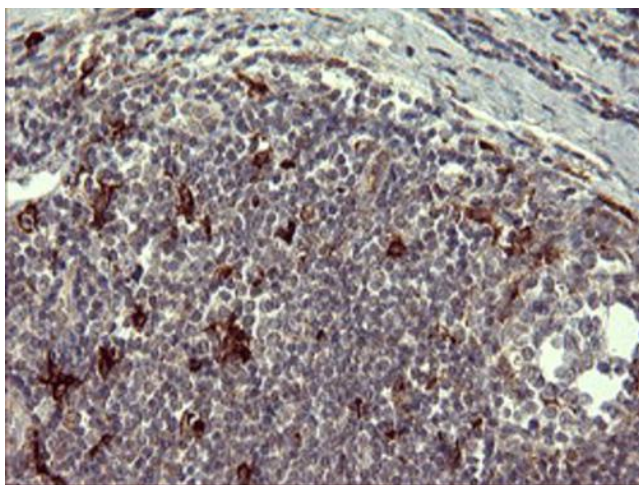
Product images:



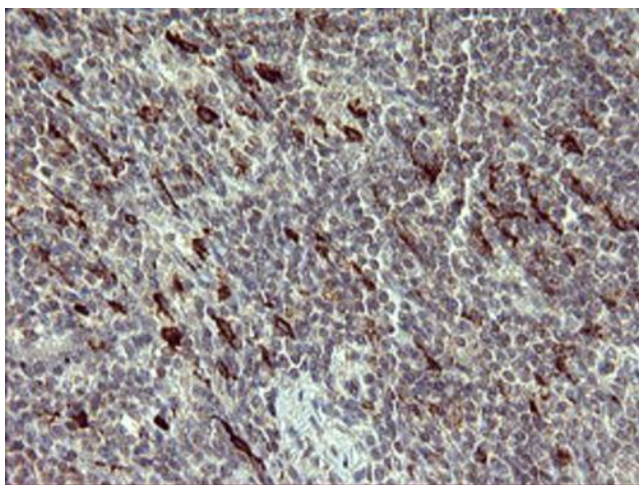
HEK293T cells were transfected with the pCMV6-ENTRY control (Left lane) or pCMV6-ENTRY MMP13 ([RC224156], Right lane) cDNA for 48 hrs and lysed. Equivalent amounts of cell lysates (5 ug per lane) were separated by SDS-PAGE and immunoblotted with anti-MMP13. Positive lysates [LY400869] (100ug) and [LC400869] (20ug) can be purchased separately from OriGene.



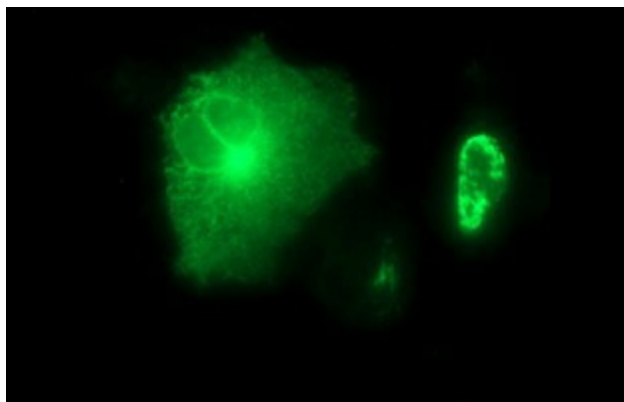
Immunohistochemical staining of paraffin-embedded Adenocarcinoma of Human ovary tissue using anti-MMP13 mouse monoclonal antibody. Heat-induced epitope retrieval by EDTA solution buffer pH 8.0 at 120°C for 3 min.



Immunohistochemical staining of paraffin-embedded Human lymph node tissue within the normal limits using anti-MMP13 mouse monoclonal antibody. Heat-induced epitope retrieval by EDTA solution buffer pH 8.0 at 120°C for 3 min.



Immunohistochemical staining of paraffin-embedded Human lymphoma tissue using anti-MMP13 mouse monoclonal antibody. Heat-induced epitope retrieval by EDTA solution buffer pH 8.0 at 120°C for 3 min.



Anti-MMP13 mouse monoclonal antibody (TA506688) immunofluorescent staining of COS7 cells transiently transfected by pCMV6-ENTRY MMP13 (RC224156).