

Product datasheet for **TA506685AM**

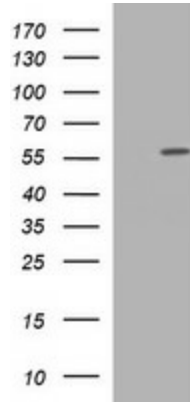
TUBA6 (TUBA1C) Mouse Monoclonal Antibody (Biotin conjugated) [Clone ID: OTI1D8]

Product data:

Product Type:	Primary Antibodies
Clone Name:	OTI1D8
Applications:	WB
Recommended Dilution:	WB 1:2000
Reactivity:	Human, Mouse, Rat
Host:	Mouse
Isotype:	IgG2a
Clonality:	Monoclonal
Immunogen:	Full length human recombinant protein of human TUBA1C(NP_116093) produced in HEK293T cell.
Formulation:	PBS (pH 7.3) containing 1% BSA, 50% glycerol and 0.02% sodium azide.
Concentration:	0.5 mg/ml
Purification:	Purified from mouse ascites fluids or tissue culture supernatant by affinity chromatography (protein A/G)
Conjugation:	Biotin
Storage:	Store at -20°C as received.
Stability:	Stable for 12 months from date of receipt.
Predicted Protein Size:	49.7 kDa
Gene Name:	tubulin alpha 1c
Database Link:	NP_116093 Entrez Gene 22146 Mouse Entrez Gene 300218 Rat Entrez Gene 84790 Human Q9BQE3
Synonyms:	bcm948; TUBA6
Protein Pathways:	Gap junction, Pathogenic Escherichia coli infection



[View online »](#)

Product images:

HEK293T cells were transfected with the pCMV6-ENTRY control (Cat# [PS100001], Left lane) or pCMV6-ENTRY TUBA1C (Cat# [RC203274], Right lane) cDNA for 48 hrs and lysed. Equivalent amounts of cell lysates (5 ug per lane) were separated by SDS-PAGE and immunoblotted with anti-TUBA1C (Cat# [TA506685]). Positive lysates [LY409974] (100ug) and [LC409974] (20ug) can be purchased separately from OriGene.