

## Product datasheet for **TA506684**

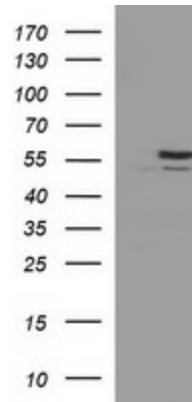
### **TUBB2B Mouse Monoclonal Antibody [Clone ID: OTI8F12]**

#### **Product data:**

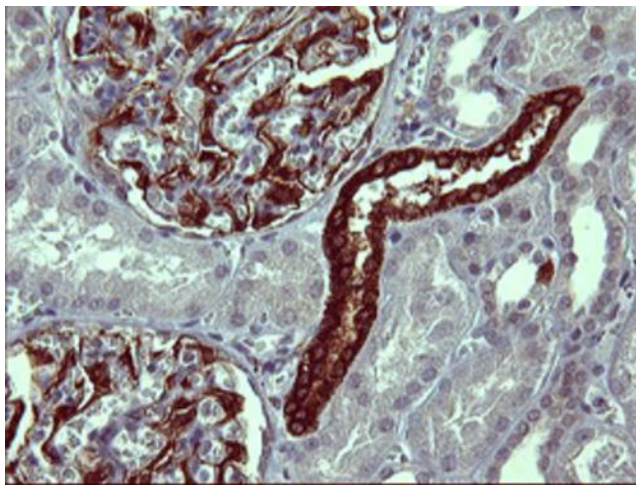
<b>Product Type:</b>	Primary Antibodies
<b>Clone Name:</b>	OTI8F12
<b>Applications:</b>	IF, IHC, WB
<b>Recommended Dilution:</b>	WB 1:4000, IF 1:100, IHC: 1:150
<b>Reactivity:</b>	Human, Mouse, Rat
<b>Host:</b>	Mouse
<b>Isotype:</b>	IgG2a
<b>Clonality:</b>	Monoclonal
<b>Immunogen:</b>	Full length human recombinant protein of human TUBB2B(NP_821080) produced in HEK293T cell.
<b>Formulation:</b>	PBS (pH 7.3) containing 1% BSA, 50% glycerol and 0.02% sodium azide.
<b>Concentration:</b>	1 mg/ml
<b>Purification:</b>	Purified from mouse ascites fluids or tissue culture supernatant by affinity chromatography (protein A/G)
<b>Conjugation:</b>	Unconjugated
<b>Storage:</b>	Store at -20°C as received.
<b>Stability:</b>	Stable for 12 months from date of receipt.
<b>Predicted Protein Size:</b>	49.8 kDa
<b>Gene Name:</b>	tubulin beta 2B class IIb
<b>Database Link:</b>	<a href="#">NP_821080</a> <a href="#">Entrez Gene 73710 Mouse</a> <a href="#">Entrez Gene 291081 Rat</a> <a href="#">Entrez Gene 347733 Human</a> <a href="#">Q9BVA1</a>
<b>Synonyms:</b>	bA506K6.1; PMGYSA
<b>Protein Families:</b>	Druggable Genome
<b>Protein Pathways:</b>	Gap junction, Pathogenic Escherichia coli infection



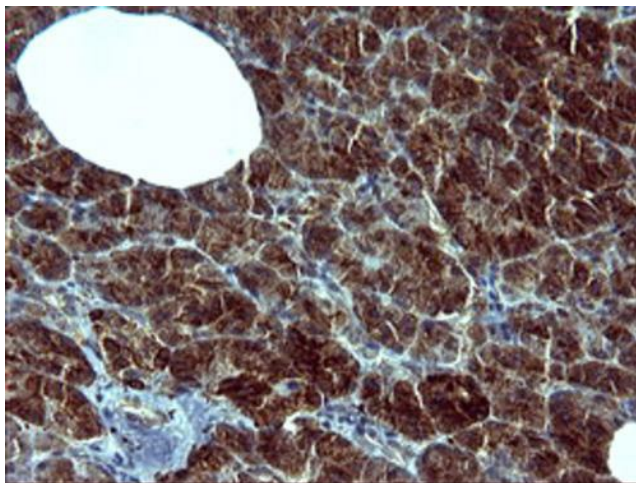
[View online »](#)

**Product images:**

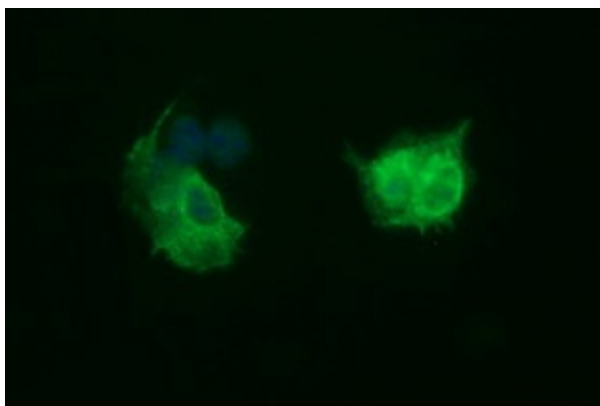
HEK293T cells were transfected with the pCMV6-ENTRY control (Left lane) or pCMV6-ENTRY TUBB2B ([RC209075], Right lane) cDNA for 48 hrs and lysed. Equivalent amounts of cell lysates (5 ug per lane) were separated by SDS-PAGE and immunoblotted with anti-TUBB2B. Positive lysates [LY405880] (100ug) and [LC405880] (20ug) can be purchased separately from OriGene.



Immunohistochemical staining of paraffin-embedded Human Kidney tissue within the normal limits using anti-TUBB2B mouse monoclonal antibody. (TA506684). Heat-induced epitope retrieval by EDTA solution buffer pH 8.0 at 120°C for 3 min.



Immunohistochemical staining of paraffin-embedded Human pancreas tissue within the normal limits using anti-TUBB2B mouse monoclonal antibody. (TA506684). Heat-induced epitope retrieval by EDTA solution buffer pH 8.0 at 120°C for 3 min.



Anti-TUBB2B mouse monoclonal antibody (TA506684) immunofluorescent staining of COS7 cells transiently transfected by pCMV6-ENTRY TUBB2B ([RC209075]).