

Product datasheet for **TA506683M**

PMS2 Mouse Monoclonal Antibody [Clone ID: OTI4B7]

Product data:

Product Type:	Primary Antibodies
Clone Name:	OTI4B7
Applications:	IF, IHC, WB
Recommended Dilution:	WB 1:500, IHC 1:150, IF: 1:100
Reactivity:	Human
Host:	Mouse
Isotype:	IgG2b
Clonality:	Monoclonal
Immunogen:	Full length human recombinant protein of human PMS2(NP_000526) produced in HEK293T cell.
Formulation:	PBS (pH 7.3) containing 1% BSA, 50% glycerol and 0.02% sodium azide.
Concentration:	1 mg/ml
Purification:	Purified from mouse ascites fluids or tissue culture supernatant by affinity chromatography (protein A/G)
Conjugation:	Unconjugated
Storage:	Store at -20°C as received.
Stability:	Stable for 12 months from date of receipt.
Predicted Protein Size:	95.6 kDa
Gene Name:	PMS1 homolog 2, mismatch repair system component
Database Link:	NP_000526 Entrez Gene 5395 Human P54278
Background:	This gene is one of the PMS2 gene family members found in clusters on chromosome 7. The product of this gene is involved in DNA mismatch repair. It forms a heterodimer with MLH1 and this complex interacts with other complexes bound to mismatched bases. Mutations in this gene are associated with hereditary nonpolyposis colorectal cancer, Turcot syndrome, and are a cause of supratentorial primitive neuroectodermal tumors. Alternatively spliced transcript variants have been observed for this gene. [provided by RefSeq, Jul 2008]

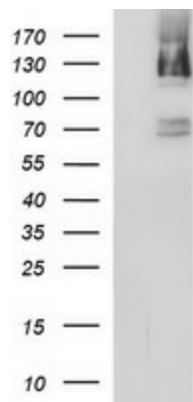

[View online »](#)

Synonyms: HNPCC4; PMS2CL; PMSL2

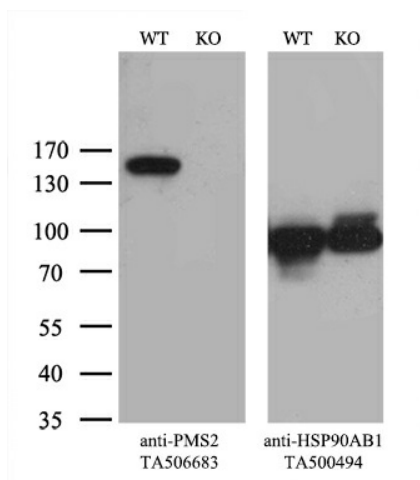
Protein Families: Druggable Genome

Protein Pathways: Mismatch repair

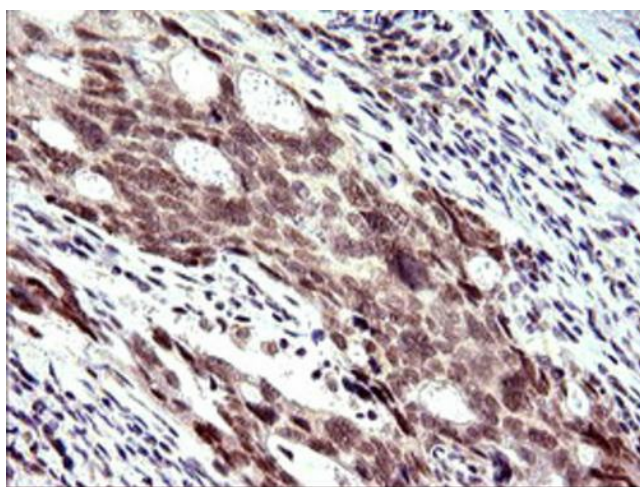
Product images:



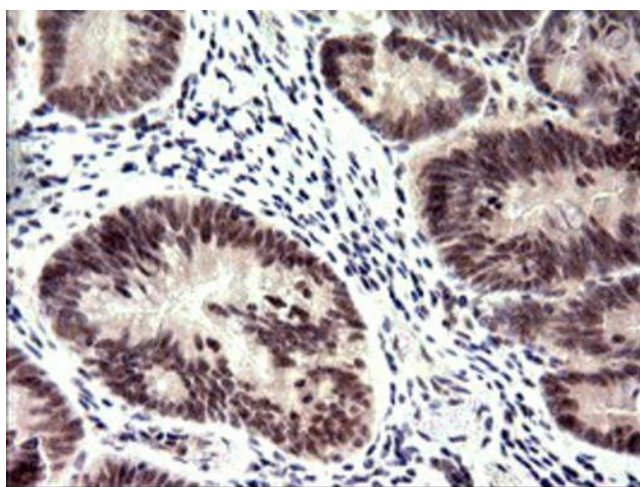
HEK293T cells were transfected with the pCMV6-ENTRY control (Left lane) or pCMV6-ENTRY PMS2 ([RC210880], Right lane) cDNA for 48 hrs and lysed. Equivalent amounts of cell lysates (5 ug per lane) were separated by SDS-PAGE and immunoblotted with anti-PMS2. Positive lysates [LY424658] (100ug) and [LC424658] (20ug) can be purchased separately from OriGene.



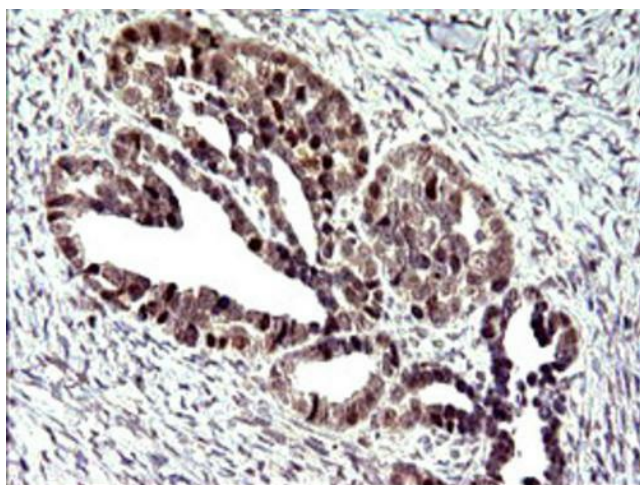
Equivalent amounts of cell lysates (10 ug per lane) of wild-type HeLa cells (WT, Cat# LC810HELA) and PMS2-Knockout HeLa cells (KO, Cat# [LC831286]) were separated by SDS-PAGE and immunoblotted with anti-PMS2 monoclonal antibody [TA506683] (1:500^o). Then the blotted membrane was stripped and reprobed with anti-HSP90 antibody as a loading control.



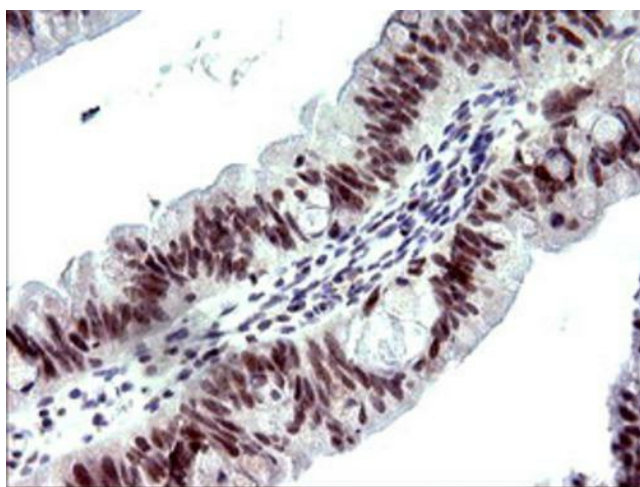
Immunohistochemical staining of paraffin-embedded Adenocarcinoma of Human breast tissue using anti-PMS2 mouse monoclonal antibody. Heat-induced epitope retrieval by EDTA solution buffer pH 8.0 at 120°C for 3 min.



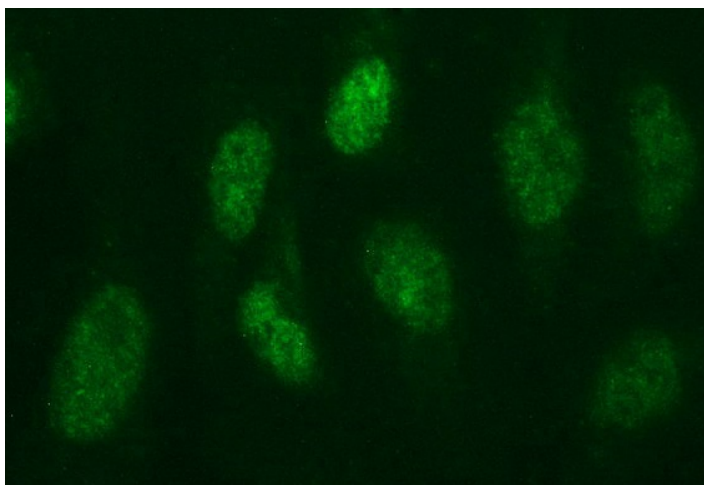
Immunohistochemical staining of paraffin-embedded Adenocarcinoma of Human colon tissue using anti-PMS2 mouse monoclonal antibody. Heat-induced epitope retrieval by EDTA solution buffer pH 8.0 at 120°C for 3 min.



Immunohistochemical staining of paraffin-embedded Adenocarcinoma of Human ovary tissue using anti-PMS2 mouse monoclonal antibody. Heat-induced epitope retrieval by EDTA solution buffer pH 8.0 at 120°C for 3 min.



Immunohistochemical staining of paraffin-embedded Human pancreas tissue within the normal limits using anti-PMS2 mouse monoclonal antibody. Heat-induced epitope retrieval by EDTA solution buffer pH 8.0 at 120°C for 3 min.



Immunofluorescent staining of HeLa cells using anti-PMS2 mouse monoclonal antibody ([TA506683]).