

Product datasheet for **TA506646AM**

INDOL1 (IDO2) Mouse Monoclonal Antibody (Biotin conjugated) [Clone ID: OTI2B9]

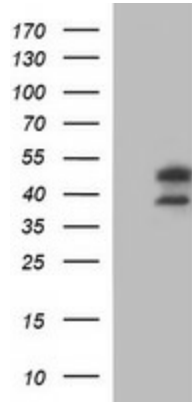
Product data:

Product Type:	Primary Antibodies
Clone Name:	OTI2B9
Applications:	IF, WB
Recommended Dilution:	WB 1:1000, IF 1:100
Reactivity:	Human
Host:	Mouse
Isotype:	IgG1
Clonality:	Monoclonal
Immunogen:	Full length human recombinant protein of human IDO2(NP_919270) produced in HEK293T cell.
Formulation:	PBS (pH 7.3) containing 1% BSA, 50% glycerol and 0.02% sodium azide.
Concentration:	0.5 mg/ml
Purification:	Purified from mouse ascites fluids or tissue culture supernatant by affinity chromatography (protein A/G)
Conjugation:	Biotin
Storage:	Store at -20°C as received.
Stability:	Stable for 12 months from date of receipt.
Predicted Protein Size:	46.9 kDa
Gene Name:	indoleamine 2,3-dioxygenase 2
Database Link:	NP_919270 Entrez Gene 169355 Human Q6ZQW0
Synonyms:	INDOL1
Protein Pathways:	Metabolic pathways, Tryptophan metabolism

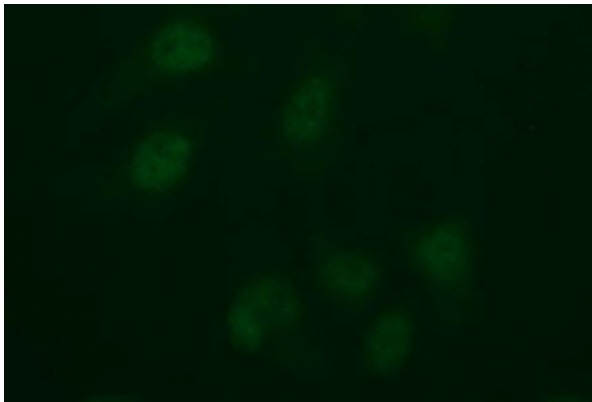


[View online »](#)

Product images:



HEK293T cells were transfected with the pCMV6-ENTRY control (Left lane) or pCMV6-ENTRY IDO2 ([RC223337], Right lane) cDNA for 48 hrs and lysed. Equivalent amounts of cell lysates (5 ug per lane) were separated by SDS-PAGE and immunoblotted with anti-IDO2. Positive lysates [LY403659] (100ug) and [LC403659] (20ug) can be purchased separately from OriGene.



Immunofluorescent staining of HeLa cells using anti-IDO2 mouse monoclonal antibody ([TA506646]).