

Product datasheet for **TA506641**

EPCAM Mouse Monoclonal Antibody [Clone ID: OTI2A3]

Product data:

| | |
|-------------------------|---|
| Product Type: | Primary Antibodies |
| Clone Name: | OTI2A3 |
| Applications: | IF, IHC, WB |
| Recommended Dilution: | WB 1:500, IF 1:100, IHC: 1:50-1:150 |
| Reactivity: | Human |
| Host: | Mouse |
| Isotype: | IgG1 |
| Clonality: | Monoclonal |
| Immunogen: | Full length human recombinant protein of human EPCAM(NP_002345) produced in HEK293T cell. |
| Formulation: | PBS (pH 7.3) containing 1% BSA, 50% glycerol and 0.02% sodium azide. |
| Concentration: | 1 mg/ml |
| Purification: | Purified from mouse ascites fluids or tissue culture supernatant by affinity chromatography (protein A/G) |
| Conjugation: | Unconjugated |
| Storage: | Store at -20°C as received. |
| Stability: | Stable for 12 months from date of receipt. |
| Predicted Protein Size: | 32.7 kDa |
| Gene Name: | epithelial cell adhesion molecule |
| Database Link: | NP_002345 Entrez Gene 4072 Human P16422 |
| Background: | This gene encodes a carcinoma-associated antigen and is a member of a family that includes at least two type I membrane proteins. This antigen is expressed on most normal epithelial cells and gastrointestinal carcinomas and functions as a homotypic calcium-independent cell adhesion molecule. The antigen is being used as a target for immunotherapy treatment of human carcinomas. Mutations in this gene result in congenital tufting enteropathy. [provided by RefSeq, Dec 2008] |

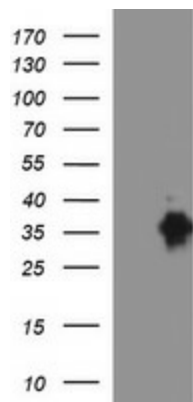


[View online »](#)

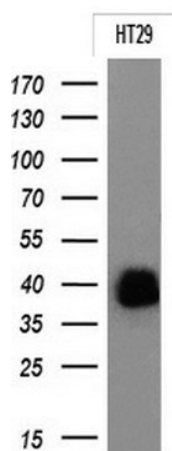
Synonyms: DIAR5; EGP-2; EGP40; EGP314; ESA; HNPCC8; KS1/4; KSA; M4S1; MIC18; MK-1; TACSTD1; TROP1

Protein Families: ES Cell Differentiation/IPS, Transmembrane

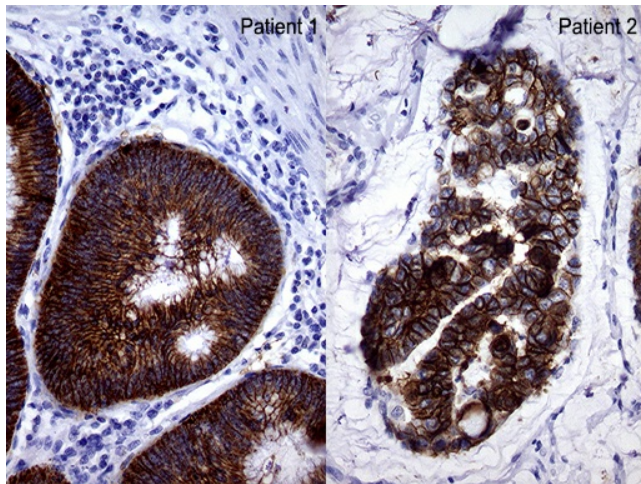
Product images:



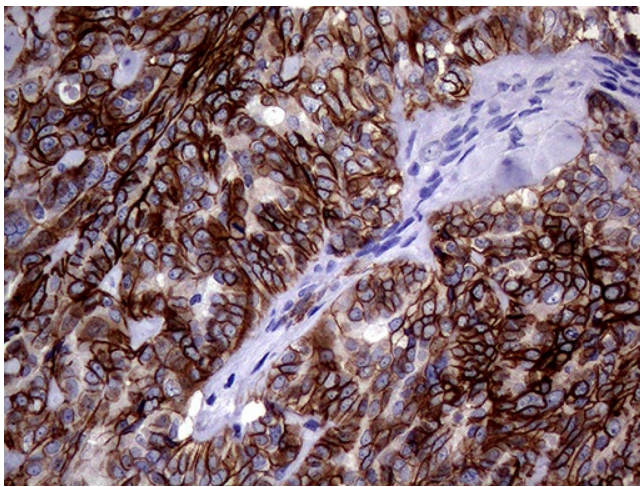
HEK293T cells were transfected with the pCMV6-ENTRY control (Left lane) or pCMV6-ENTRY EPCAM ([RC201989], Right lane) cDNA for 48 hrs and lysed. Equivalent amounts of cell lysates (5 ug per lane) were separated by SDS-PAGE and immunoblotted with anti-EPCAM. Positive lysates [LY400847] (100ug) and [LC400847] (20ug) can be purchased separately from OriGene.



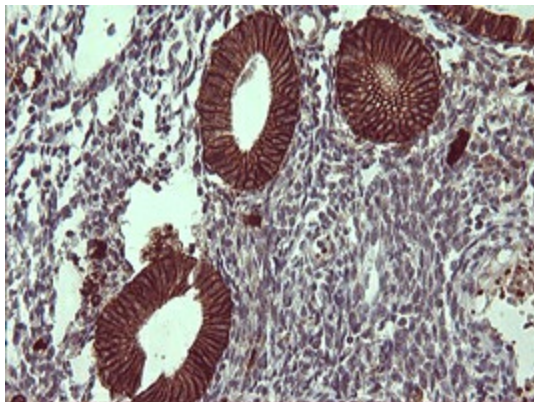
Western blot analysis of extracts (10ug) from 1 cell line by using anti-EPCAM monoclonal antibody at 1:200.



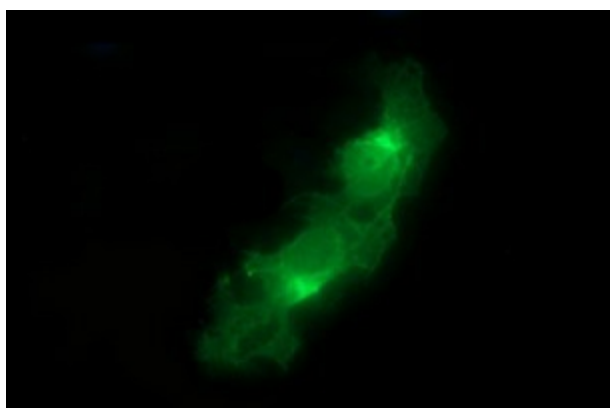
Immunohistochemical staining of paraffin-embedded Adenocarcinoma of Human colon tissue using anti-EPCAM mouse monoclonal antibody. (Heat-induced epitope retrieval by 1mM EDTA in 10mM Tris buffer (pH8.0) at 120°C for 3min, TA506641) (1:500)



Immunohistochemical staining of paraffin-embedded Adenocarcinoma of Human ovary tissue using anti-EPCAM mouse monoclonal antibody at 1:150 (TA506641)



Immunohistochemical staining of paraffin-embedded Human endometrium tissue within the normal limits using anti-EPCAM mouse monoclonal antibody at 1:150 (TA506641)



Anti-EPCAM mouse monoclonal antibody (TA506641) immunofluorescent staining of COS7 cells transiently transfected by pCMV6-ENTRY EPCAM ([RC201989]).