

Product datasheet for **TA506626AM**

EPCAM Mouse Monoclonal Antibody (Biotin conjugated) [Clone ID: OTI2B1]

Product data:

Product Type:	Primary Antibodies
Clone Name:	OTI2B1
Applications:	FC, IF, IHC, WB
Recommended Dilution:	WB: 1:1000-1:4000, IF 1:100, Flow 1:100, IHC: 1:150-1:500
Reactivity:	Human
Host:	Mouse
Isotype:	IgG1
Clonality:	Monoclonal
Immunogen:	Full length human recombinant protein of human EPCAM(NP_002345) produced in HEK293T cell.
Formulation:	PBS (pH 7.3) containing 1% BSA, 50% glycerol and 0.02% sodium azide.
Concentration:	0.5 mg/ml
Purification:	Purified from mouse ascites fluids or tissue culture supernatant by affinity chromatography (protein A/G)
Conjugation:	Biotin
Storage:	Store at -20°C as received.
Stability:	Stable for 12 months from date of receipt.
Predicted Protein Size:	32.7 kDa
Gene Name:	epithelial cell adhesion molecule
Database Link:	NP_002345 Entrez Gene 4072 Human P16422
Background:	This gene encodes a carcinoma-associated antigen and is a member of a family that includes at least two type I membrane proteins. This antigen is expressed on most normal epithelial cells and gastrointestinal carcinomas and functions as a homotypic calcium-independent cell adhesion molecule. The antigen is being used as a target for immunotherapy treatment of human carcinomas. Mutations in this gene result in congenital tufting enteropathy. [provided by RefSeq, Dec 2008]

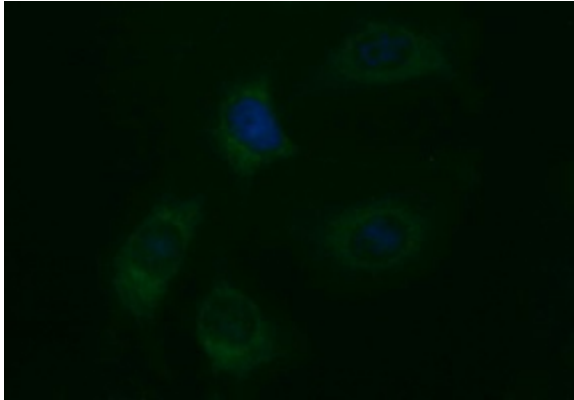


[View online »](#)

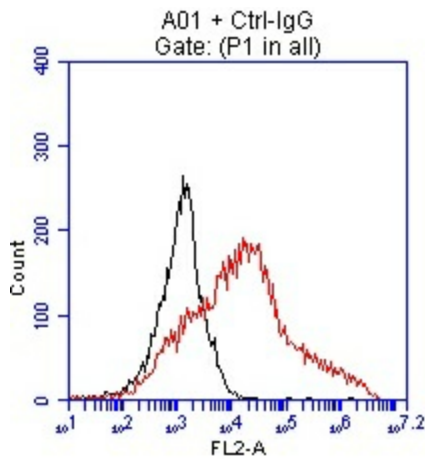
Synonyms: DIAR5; EGP-2; EGP40; EGP314; ESA; HNPCC8; KS1/4; KSA; M4S1; MIC18; MK-1; TACSTD1; TROP1

Protein Families: ES Cell Differentiation/IPS, Transmembrane

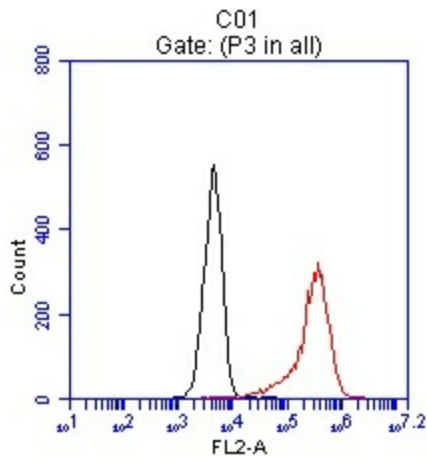
Product images:



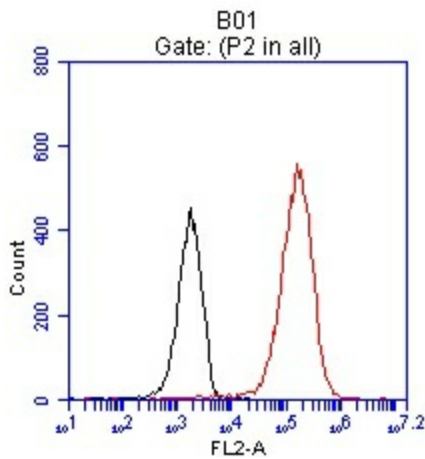
Immunofluorescent staining of HeLa cells using anti-EPCAM mouse monoclonal antibody ([TA506626]).



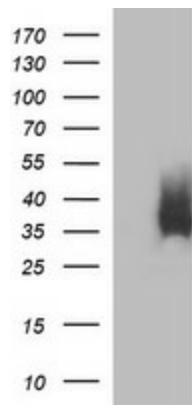
Flow cytometric analysis of live HEK293 cells transfected with EPCAM ORF clone (Cat# [RC201989]), using anti-EPCAM antibody ([TA506626] at 1:100, Red), compared to IgG1 isotype control (Black).



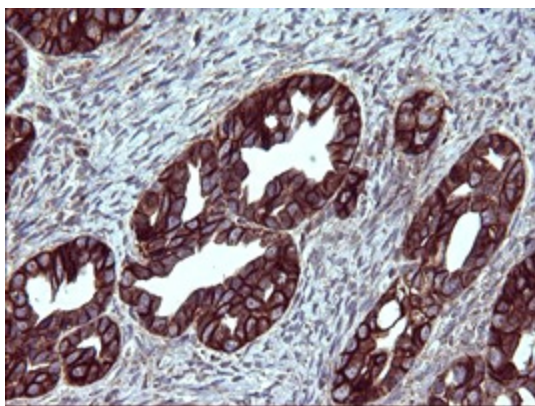
Flow cytometric analysis of live OVCAR-4 cells, using anti-EPCAM antibody ([TA506626] at 1:100, Red), compared to IgG1 isotype control (Black).



Flow cytometric analysis of live HT29 cells, using anti-EPCAM antibody ([TA506626] at 1:100, Red), compared to IgG1 isotype control (Black).



HEK293T cells were transfected with the pCMV6-ENTRY control (Left lane) or pCMV6-ENTRY EPCAM ([RC201989], Right lane) cDNA for 48 hrs and lysed. Equivalent amounts of cell lysates (5 ug per lane) were separated by SDS-PAGE and immunoblotted with anti-EPCAM (1:4000). Positive lysates [LY400847] (100ug) and [LC400847] (20ug) can be purchased separately from OriGene.



Immunohistochemical staining of paraffin-embedded Adenocarcinoma of Human ovary tissue using anti-EPCAM mouse monoclonal antibody at 1:500 dilution. ([TA506626])