

Product datasheet for **TA506622M**

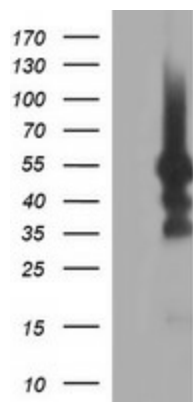
TUBB1 Mouse Monoclonal Antibody [Clone ID: OTI1G5]

Product data:

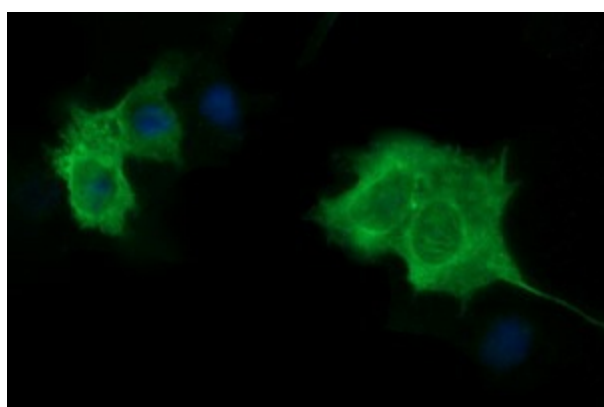
Product Type:	Primary Antibodies
Clone Name:	OTI1G5
Applications:	IF, WB
Recommended Dilution:	WB 1:4000, IF 1:100
Reactivity:	Human, Mouse, Rat
Host:	Mouse
Isotype:	IgG2a
Clonality:	Monoclonal
Immunogen:	Full length human recombinant protein of human TUBB1(NP_110400) produced in HEK293T cell.
Formulation:	PBS (pH 7.3) containing 1% BSA, 50% glycerol and 0.02% sodium azide.
Concentration:	1 mg/ml
Purification:	Purified from mouse ascites fluids or tissue culture supernatant by affinity chromatography (protein A/G)
Conjugation:	Unconjugated
Storage:	Store at -20°C as received.
Stability:	Stable for 12 months from date of receipt.
Predicted Protein Size:	50.1 kDa
Gene Name:	tubulin beta 1 class VI
Database Link:	NP_110400 Entrez Gene 545486 Mouse Entrez Gene 679312 Rat Entrez Gene 81027 Human Q9H4B7
Synonyms:	beta 1; beta tubulin 1; class VI; dj543j19.4; OTTHUMP00000031411; tubulin
Protein Families:	Druggable Genome
Protein Pathways:	Gap junction, Pathogenic Escherichia coli infection



[View online »](#)

Product images:


HEK293T cells were transfected with the pCMV6-ENTRY control (Left lane) or pCMV6-ENTRY TUBB1 ([RC207459], Right lane) cDNA for 48 hrs and lysed. Equivalent amounts of cell lysates (5 ug per lane) were separated by SDS-PAGE and immunoblotted with anti-TUBB1. Positive lysates [LY410723] (100ug) and [LC410723] (20ug) can be purchased separately from OriGene.



Anti-TUBB1 mouse monoclonal antibody ([TA506622]) immunofluorescent staining of COS7 cells transiently transfected by pCMV6-ENTRY TUBB1 ([RC207459]).