

## Product datasheet for **TA506622AM**

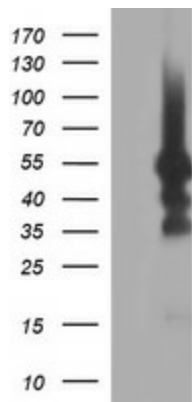
### **TUBB1 Mouse Monoclonal Antibody (Biotin conjugated) [Clone ID: OTI1G5]**

#### **Product data:**

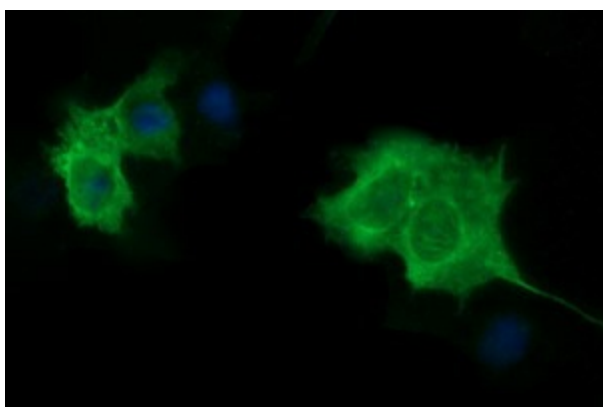
<b>Product Type:</b>	Primary Antibodies
<b>Clone Name:</b>	OTI1G5
<b>Applications:</b>	IF, WB
<b>Recommended Dilution:</b>	WB 1:4000, IF 1:100
<b>Reactivity:</b>	Human, Mouse, Rat
<b>Host:</b>	Mouse
<b>Isotype:</b>	IgG2a
<b>Clonality:</b>	Monoclonal
<b>Immunogen:</b>	Full length human recombinant protein of human TUBB1(NP_110400) produced in HEK293T cell.
<b>Formulation:</b>	PBS (pH 7.3) containing 1% BSA, 50% glycerol and 0.02% sodium azide.
<b>Concentration:</b>	0.5 mg/ml
<b>Purification:</b>	Purified from mouse ascites fluids or tissue culture supernatant by affinity chromatography (protein A/G)
<b>Conjugation:</b>	Biotin
<b>Storage:</b>	Store at -20°C as received.
<b>Stability:</b>	Stable for 12 months from date of receipt.
<b>Predicted Protein Size:</b>	50.1 kDa
<b>Gene Name:</b>	tubulin beta 1 class VI
<b>Database Link:</b>	<a href="#">NP_110400</a> <a href="#">Entrez Gene 545486</a> <a href="#">MouseEntrez Gene 679312</a> <a href="#">RatEntrez Gene 81027</a> <a href="#">Human Q9H4B7</a>
<b>Synonyms:</b>	beta 1; beta tubulin 1; class VI; dj543j19.4; OTTHUMP00000031411; tubulin
<b>Protein Families:</b>	Druggable Genome
<b>Protein Pathways:</b>	Gap junction, Pathogenic Escherichia coli infection



[View online »](#)

**Product images:**

HEK293T cells were transfected with the pCMV6-ENTRY control (Left lane) or pCMV6-ENTRY TUBB1 ([RC207459], Right lane) cDNA for 48 hrs and lysed. Equivalent amounts of cell lysates (5 ug per lane) were separated by SDS-PAGE and immunoblotted with anti-TUBB1. Positive lysates [LY410723] (100ug) and [LC410723] (20ug) can be purchased separately from OriGene.



Anti-TUBB1 mouse monoclonal antibody ([TA506622]) immunofluorescent staining of COS7 cells transiently transfected by pCMV6-ENTRY TUBB1 ([RC207459]).