

## Product datasheet for TA506619M

### EPCAM Mouse Monoclonal Antibody [Clone ID: OTI1D4]

#### Product data:

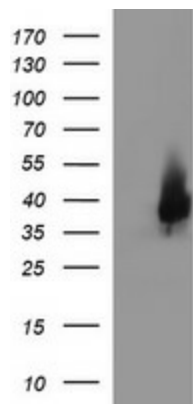
|                         |   |
|-------------------------|---|
| Product Type:           | Primary Antibodies  |
| Clone Name:             | OTI1D4  |
| Applications:           | IF, WB  |
| Recommended Dilution:   | WB: 1:4000, IF: 1:50-1:100  |
| Reactivity:             | Human   |
| Host:                   | Mouse   |
| Isotype:                | IgG1  |
| Clonality:              | Monoclonal  |
| Immunogen:              | Full length human recombinant protein of human EPCAM(NP_002345) produced in HEK293T cell.   |
| Formulation:            | PBS (pH 7.3) containing 1% BSA, 50% glycerol and 0.02% sodium azide.  |
| Concentration:          | 1 mg/ml   |
| Purification:           | Purified from mouse ascites fluids or tissue culture supernatant by affinity chromatography (protein A/G)   |
| Conjugation:            | Unconjugated  |
| Storage:                | Store at -20°C as received.   |
| Stability:              | Stable for 12 months from date of receipt.  |
| Predicted Protein Size: | 32.7 kDa  |
| Gene Name:              | epithelial cell adhesion molecule   |
| Database Link:          | <a href="#">NP_002345</a><br><a href="#">Entrez Gene 4072 Human</a><br><a href="#">P16422</a>   |
| Background:             | This gene encodes a carcinoma-associated antigen and is a member of a family that includes at least two type I membrane proteins. This antigen is expressed on most normal epithelial cells and gastrointestinal carcinomas and functions as a homotypic calcium-independent cell adhesion molecule. The antigen is being used as a target for immunotherapy treatment of human carcinomas. Mutations in this gene result in congenital tufting enteropathy. [provided by RefSeq, Dec 2008] |


[View online »](#)

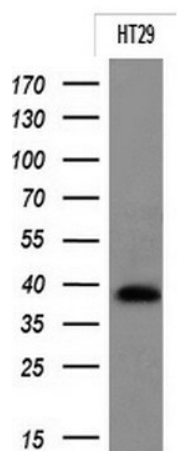
**Synonyms:** DIAR5; EGP-2; EGP40; EGP314; ESA; HNPCC8; KS1/4; KSA; M4S1; MIC18; MK-1; TACSTD1; TROP1

**Protein Families:** ES Cell Differentiation/IPS, Transmembrane

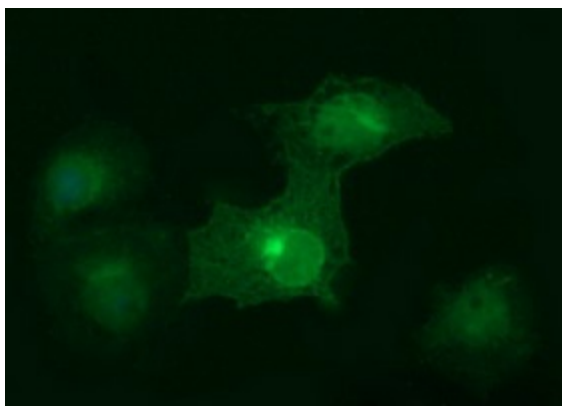
### Product images:



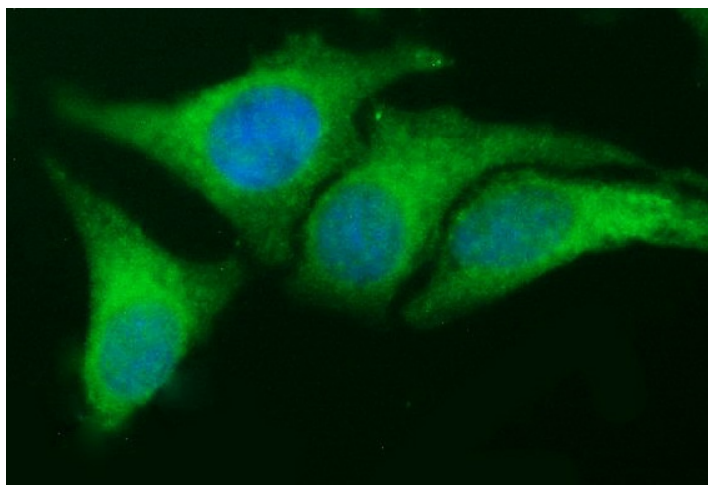
HEK293T cells were transfected with the pCMV6-ENTRY control (Left lane) or pCMV6-ENTRY EPCAM ([RC201989], Right lane) cDNA for 48 hrs and lysed. Equivalent amounts of cell lysates (5 ug per lane) were separated by SDS-PAGE and immunoblotted with anti-EPCAM. Positive lysates [LY400847] (100ug) and [LC400847] (20ug) can be purchased separately from OriGene.



Western blot analysis of extracts (10ug) from 1 cell line by using anti-EPCAM monoclonal antibody at 1:200.



Anti-EPCAM mouse monoclonal antibody ([TA506619]) immunofluorescent staining of COS7 cells transiently transfected by pCMV6-ENTRY EPCAM ([RC201989]).



Immunofluorescent staining of HeLa cells using anti-EPCAM mouse monoclonal antibody ([TA506619]) at 1:100 dilution.