

## Product datasheet for **TA506610**

### ACTH (POMC) Mouse Monoclonal Antibody [Clone ID: OTI2B2]

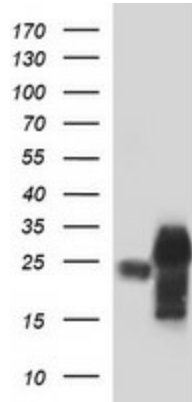
#### Product data:

Product Type:	Primary Antibodies
Clone Name:	OTI2B2
Applications:	IHC, WB
Recommended Dilution:	WB 1:4000, IHC 1:150
Reactivity:	Human
Host:	Mouse
Isotype:	IgG2a
Clonality:	Monoclonal
Immunogen:	Full length human recombinant protein of human POMC(NP_001030333) produced in HEK293T cell.
Formulation:	PBS (pH 7.3) containing 1% BSA, 50% glycerol and 0.02% sodium azide.
Concentration:	1 mg/ml
Purification:	Purified from mouse ascites fluids or tissue culture supernatant by affinity chromatography (protein A/G)
Conjugation:	Unconjugated
Storage:	Store at -20°C as received.
Stability:	Stable for 12 months from date of receipt.
Predicted Protein Size:	26.6 kDa
Gene Name:	proopiomelanocortin
Database Link:	<a href="#">NP_001030333</a> <a href="#">Entrez Gene 5443 Human P01189</a>
Synonyms:	ACTH; CLIP; LPH; MSH; NPP; POC
Protein Families:	Druggable Genome
Protein Pathways:	Adipocytokine signaling pathway, Melanogenesis

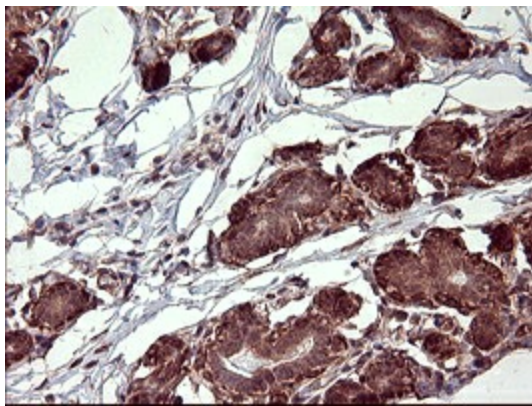


[View online »](#)

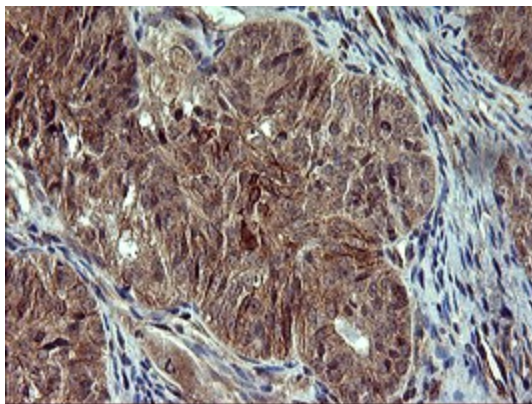
**Product images:**



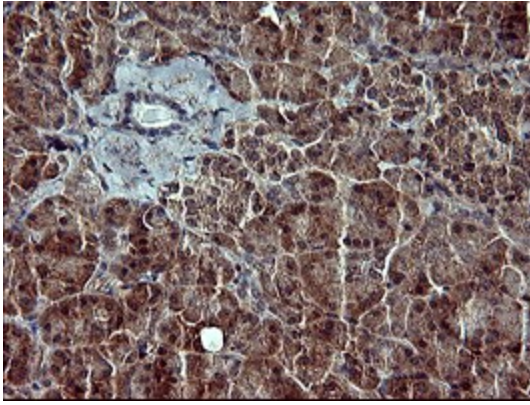
HEK293T cells were transfected with the pCMV6-ENTRY control (Cat# [PS100001], Left lane) or pCMV6-ENTRY POMC (Cat# [RC215351], Right lane) cDNA for 48 hrs and lysed. Equivalent amounts of cell lysates (5 ug per lane) were separated by SDS-PAGE and immunoblotted with anti-POMC (Cat# TA506610). Positive lysates [LY422129] (100ug) and [LC422129] (20ug) can be purchased separately from OriGene.



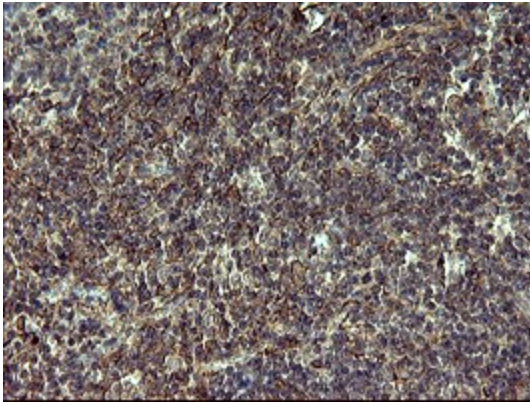
Immunohistochemical staining of paraffin-embedded Human breast tissue within the normal limits using anti-POMC mouse monoclonal antibody. (Heat-induced epitope retrieval by 10mM citric buffer, pH6.0, 120°C for 3min, TA506610)



Immunohistochemical staining of paraffin-embedded Adenocarcinoma of Human ovary tissue using anti-POMC mouse monoclonal antibody. (Heat-induced epitope retrieval by 10mM citric buffer, pH6.0, 120°C for 3min, TA506610)



Immunohistochemical staining of paraffin-embedded Human pancreas tissue within the normal limits using anti-POMC mouse monoclonal antibody. (Heat-induced epitope retrieval by 10mM citric buffer, pH6.0, 120°C for 3min, TA506610)



Immunohistochemical staining of paraffin-embedded Human lymph node tissue within the normal limits using anti-POMC mouse monoclonal antibody. (Heat-induced epitope retrieval by 10mM citric buffer, pH6.0, 120°C for 3min, TA506610)