

Product datasheet for **TA506601BM**

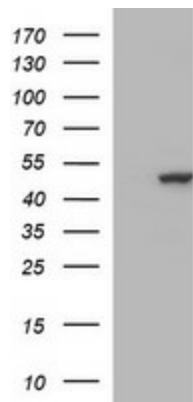
TUBB2B Mouse Monoclonal Antibody (HRP conjugated) [Clone ID: OTI5D3]

Product data:

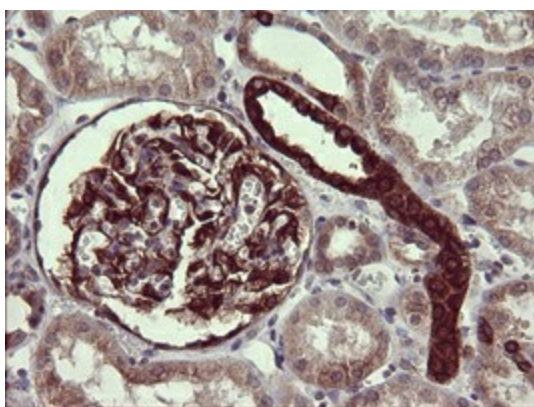
Product Type:	Primary Antibodies
Clone Name:	OTI5D3
Applications:	IF, IHC, WB
Recommended Dilution:	WB 1:4000, IF 1:100, IHC: 1:150
Reactivity:	Human, Mouse, Rat
Host:	Mouse
Isotype:	IgG2a
Clonality:	Monoclonal
Immunogen:	Full length human recombinant protein of human TUBB2B(NP_821080) produced in HEK293T cell.
Formulation:	PBS (pH 7.3) containing 1% BSA, 50% glycerol.
Concentration:	0.5 mg/ml
Purification:	Purified from mouse ascites fluids or tissue culture supernatant by affinity chromatography (protein A/G)
Conjugation:	HRP
Storage:	Store at -20°C as received.
Stability:	Stable for 12 months from date of receipt.
Predicted Protein Size:	49.8 kDa
Gene Name:	tubulin beta 2B class IIb
Database Link:	NP_821080 Entrez Gene 73710 Mouse Entrez Gene 291081 Rat Entrez Gene 347733 Human Q9BVA1
Synonyms:	bA506K6.1; PMGYSA
Protein Families:	Druggable Genome
Protein Pathways:	Gap junction, Pathogenic Escherichia coli infection



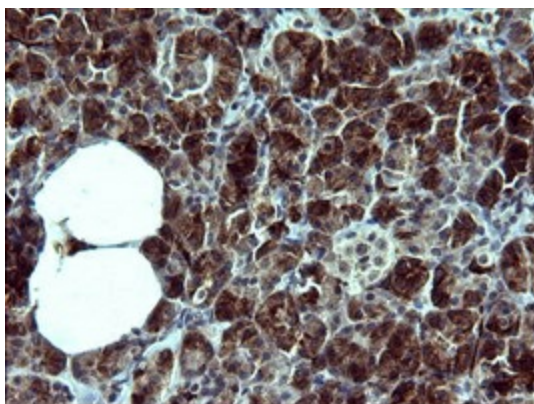
[View online »](#)

Product images:

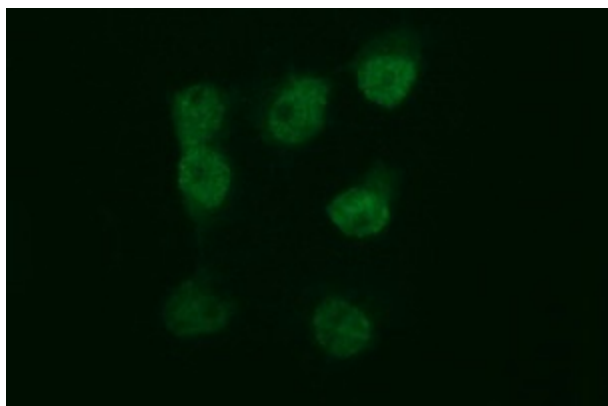
HEK293T cells were transfected with the pCMV6-ENTRY control (Cat# [PS100001], Left lane) or pCMV6-ENTRY TUBB2B (Cat# [RC209075], Right lane) cDNA for 48 hrs and lysed. Equivalent amounts of cell lysates (5 ug per lane) were separated by SDS-PAGE and immunoblotted with anti-TUBB2B (Cat# [TA506601]). Positive lysates [LY405880] (100ug) and [LC405880] (20ug) can be purchased separately from OriGene.



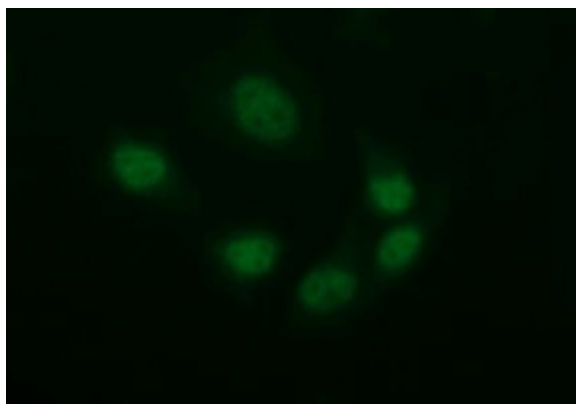
Immunohistochemical staining of paraffin-embedded Human Kidney tissue within the normal limits using anti-TUBB2B mouse monoclonal antibody. ([TA506601])



Immunohistochemical staining of paraffin-embedded Human pancreas tissue within the normal limits using anti-TUBB2B mouse monoclonal antibody. ([TA506601])



Anti-TUBB2B mouse monoclonal antibody ([TA506601]) immunofluorescent staining of COS7 cells transiently transfected by pCMV6-ENTRY TUBB2B ([RC209075]).



Immunofluorescent staining of HeLa cells using anti-TUBB2B mouse monoclonal antibody ([TA506601]).