

## Product datasheet for **TA506588BM**

### beta II Tubulin (TUBB2A) Mouse Monoclonal Antibody (HRP conjugated) [Clone ID: OTI3B7]

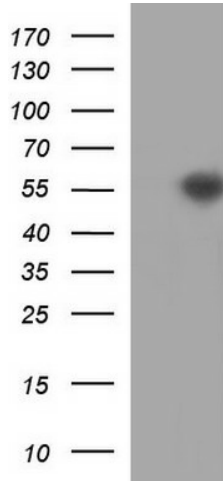
#### Product data:

Product Type:	Primary Antibodies
Clone Name:	OTI3B7
Applications:	IF, WB
Recommended Dilution:	WB 1:4000, IF 1:100
Reactivity:	Human, Mouse, Rat
Host:	Mouse
Isotype:	IgG2a
Clonality:	Monoclonal
Immunogen:	Full length human recombinant protein of human TUBB2A(NP_001060) produced in HEK293T cell.
Formulation:	PBS (pH 7.3) containing 1% BSA, 50% glycerol.
Concentration:	0.5 mg/ml
Purification:	Purified from mouse ascites fluids or tissue culture supernatant by affinity chromatography (protein A/G)
Conjugation:	HRP
Storage:	Store at -20°C as received.
Stability:	Stable for 12 months from date of receipt.
Predicted Protein Size:	49.7 kDa
Gene Name:	tubulin beta 2A class IIa
Database Link:	<a href="#">NP_001060</a> <a href="#">Entrez Gene 22151 Mouse</a> <a href="#">Entrez Gene 498736 Rat</a> <a href="#">Entrez Gene 7280 Human</a> <a href="#">Q13885</a>
Synonyms:	CDCBM5; dj40E16.7; TUBB; TUBB2
Protein Families:	Druggable Genome
Protein Pathways:	Gap junction, Pathogenic Escherichia coli infection

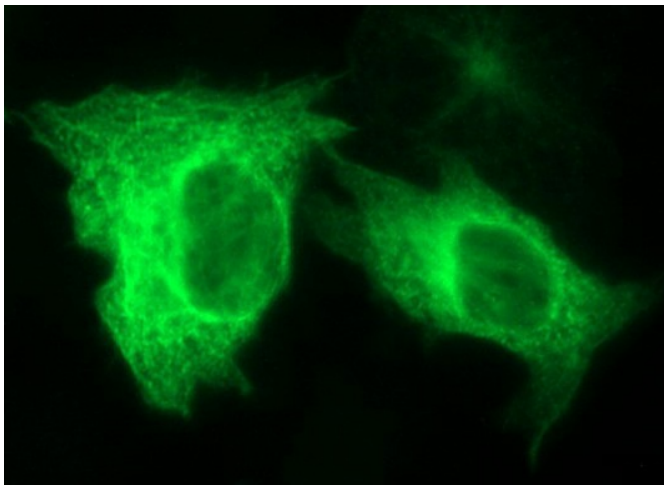


[View online »](#)

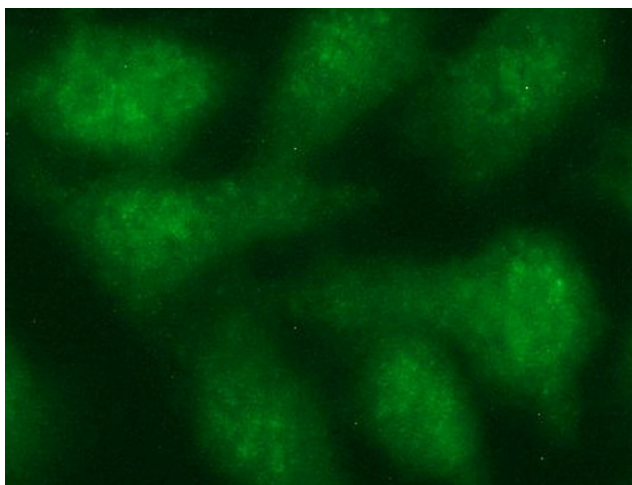
**Product images:**



HEK293T cells were transfected with the pCMV6-ENTRY control (Left lane) or pCMV6-ENTRY TUBB2A ([RC205881], Right lane) cDNA for 48 hrs and lysed. Equivalent amounts of cell lysates (5 ug per lane) were separated by SDS-PAGE and immunoblotted with anti-TUBB2A. Positive lysates [LY420706] (100ug) and [LC420706] (20ug) can be purchased separately from OriGene.



Anti-TUBB2A mouse monoclonal antibody ([TA506588]) immunofluorescent staining of COS7 cells transiently transfected by pCMV6-ENTRY TUBB2A ([RC205881]).



Immunofluorescent staining of HeLa cells using anti-TUBB2A mouse monoclonal antibody ([TA506588]).