

## Product datasheet for **TA506584AM**

### TGF beta 1 (TGFB1) Mouse Monoclonal Antibody (Biotin conjugated) [Clone ID: OTI2B5]

#### Product data:

Product Type:	Primary Antibodies
Clone Name:	OTI2B5
Applications:	WB
Recommended Dilution:	WB 1:2000
Reactivity:	Human, Mouse, Rat
Host:	Mouse
Isotype:	IgG2a
Clonality:	Monoclonal
Immunogen:	Full length human recombinant protein of human TGFB1(NP_000651) produced in HEK293T cell.
Formulation:	PBS (pH 7.3) containing 1% BSA, 50% glycerol and 0.02% sodium azide.
Concentration:	0.5 mg/ml
Purification:	Purified from mouse ascites fluids or tissue culture supernatant by affinity chromatography (protein A/G)
Conjugation:	Biotin
Storage:	Store at -20°C as received.
Stability:	Stable for 12 months from date of receipt.
Predicted Protein Size:	28.4 kDa
Gene Name:	transforming growth factor beta 1
Database Link:	<a href="#">NP_000651</a> <a href="#">Entrez Gene 21803 Mouse</a> <a href="#">Entrez Gene 59086 Rat</a> <a href="#">Entrez Gene 7040 Human</a> <a href="#">P01137</a>
Synonyms:	CED; DPD1; LAP; TGFB; TGFbeta
Protein Families:	Druggable Genome, ES Cell Differentiation/IPS, Secreted Protein, Transcription Factors

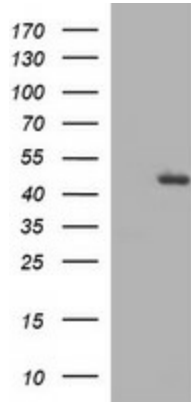


[View online »](#)

**Protein Pathways:**

Cell cycle, Chronic myeloid leukemia, Colorectal cancer, Cytokine-cytokine receptor interaction, Dilated cardiomyopathy, Hypertrophic cardiomyopathy (HCM), MAPK signaling pathway, Pancreatic cancer, Pathways in cancer, Renal cell carcinoma, TGF-beta signaling pathway

**Product images:**



HEK293T cells were transfected with the pCMV6-ENTRY control (Left lane) or pCMV6-ENTRY TGFB1 ([RC200973], Right lane) cDNA for 48 hrs and lysed. Equivalent amounts of cell lysates (5 ug per lane) were separated by SDS-PAGE and immunoblotted with anti-TGFB1.