

Product datasheet for **TA506583S**

TGF beta 1 (TGFB1) Mouse Monoclonal Antibody [Clone ID: OTI3B6]

Product data:

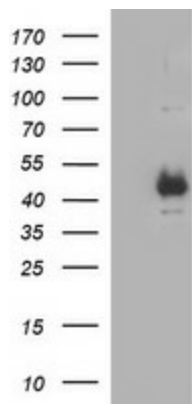
Product Type:	Primary Antibodies
Clone Name:	OTI3B6
Applications:	FC, IF, WB
Recommended Dilution:	WB 1:2000, IF: 1:100
Reactivity:	Human, Mouse, Rat
Host:	Mouse
Isotype:	IgG2a
Clonality:	Monoclonal
Immunogen:	Full length human recombinant protein of human TGFB1(NP_000651) produced in HEK293T cell.
Formulation:	PBS (pH 7.3) containing 1% BSA, 50% glycerol and 0.02% sodium azide.
Concentration:	1 mg/ml
Purification:	Purified from mouse ascites fluids or tissue culture supernatant by affinity chromatography (protein A/G)
Conjugation:	Unconjugated
Storage:	Store at -20°C as received.
Stability:	Stable for 12 months from date of receipt.
Predicted Protein Size:	28.4 kDa
Gene Name:	transforming growth factor beta 1
Database Link:	NP_000651 Entrez Gene 21803 Mouse Entrez Gene 59086 Rat Entrez Gene 7040 Human P01137
Synonyms:	CED; DPD1; LAP; TGFB; TGFbeta
Protein Families:	Druggable Genome, ES Cell Differentiation/IPS, Secreted Protein, Transcription Factors



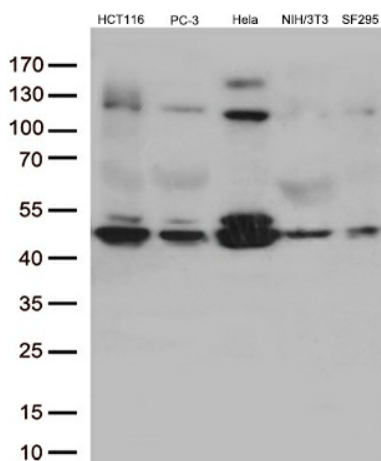
[View online »](#)

Protein Pathways:

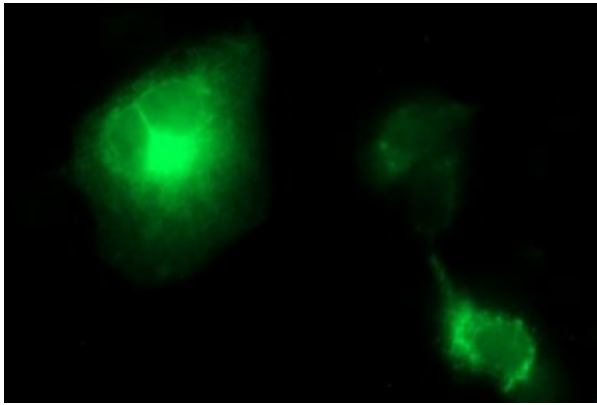
Cell cycle, Chronic myeloid leukemia, Colorectal cancer, Cytokine-cytokine receptor interaction, Dilated cardiomyopathy, Hypertrophic cardiomyopathy (HCM), MAPK signaling pathway, Pancreatic cancer, Pathways in cancer, Renal cell carcinoma, TGF-beta signaling pathway

Product images:


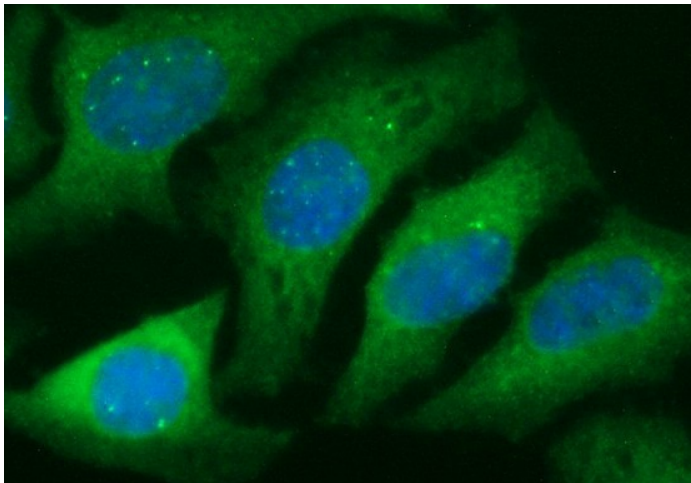
HEK293T cells were transfected with the pCMV6-ENTRY control (Cat# [PS100001], Left lane) or pCMV6-ENTRY TGFB1 (Cat# [RC200973], Right lane) cDNA for 48 hrs and lysed. Equivalent amounts of cell lysates (5 ug per lane) were separated by SDS-PAGE and immunoblotted with anti-TGFB1 (Cat# [TA506583])(1:2000).



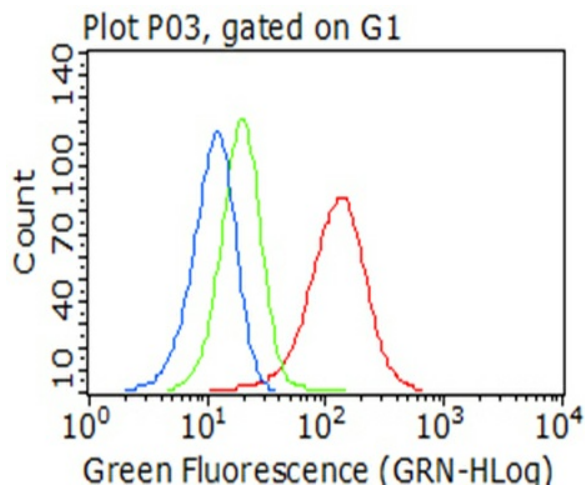
Western blot analysis of extracts (35ug) from 5 different cell lines by using anti-TGFB1 monoclonal antibody (1:500).



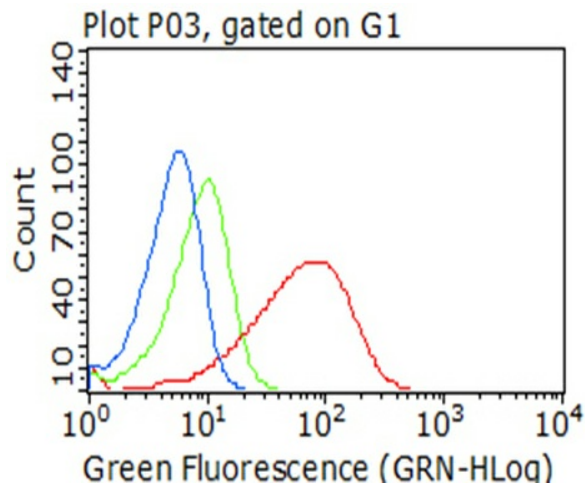
Anti-TGFB1 mouse monoclonal antibody ([TA506583]) immunofluorescent staining of COS7 cells transiently transfected by pCMV6-ENTRY TGFB1 ([RC200973]) (1:100).



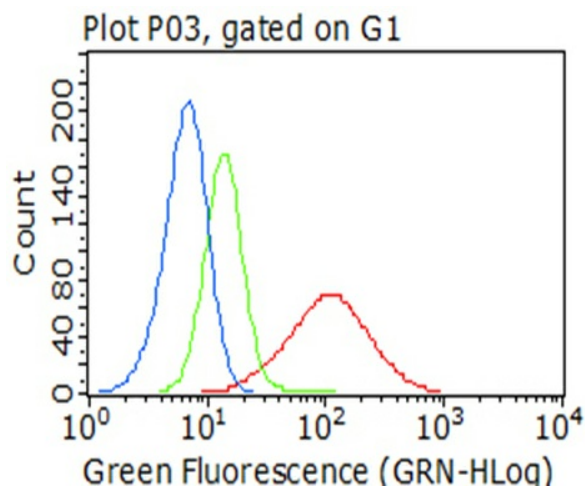
Immunofluorescent staining of HeLa cells using anti-TGFB1 mouse monoclonal antibody ([TA506583]) (1:100).



Flow cytometric Analysis of permeabilized HeLa cells, using anti-TGFB1 antibody ([TA506583]), (Red), compared to an IgG isotype control, (green), and negative control (PBS), (Blue) (1:100).



Flow cytometric Analysis of permeabilized HCT116 cells, using anti-TGFB1 antibody ([TA506583]), (Red), compared to an IgG isotype control, (green), and negative control (PBS), (Blue) (1:100).



Flow cytometric Analysis of permeabilized SF295 cells, using anti-TGFB1 antibody ([TA506583]), (Red), compared to an IgG isotype control, (green), and negative control (PBS), (Blue) (1:100).