

Product datasheet for **TA506582M**

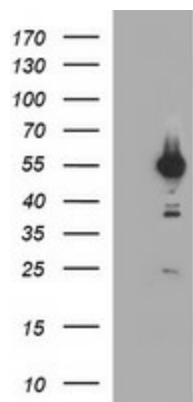
Tubulin (TUBA1B) Mouse Monoclonal Antibody [Clone ID: OTI3G3]

Product data:

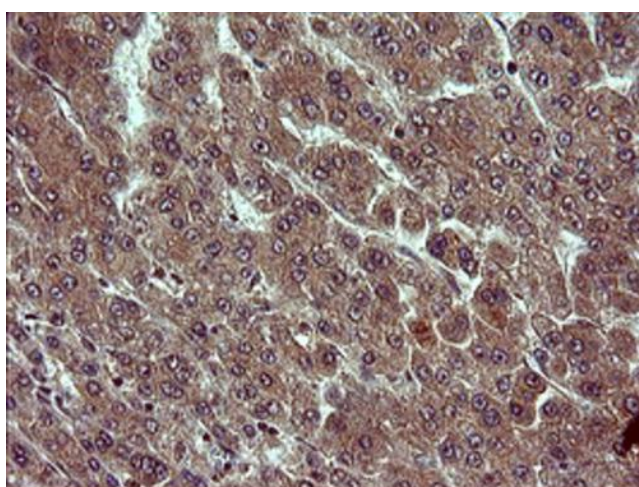
| | |
|-------------------------|--|
| Product Type: | Primary Antibodies |
| Clone Name: | OTI3G3 |
| Applications: | IHC, WB |
| Recommended Dilution: | WB 1:4000, IHC: 1:150 |
| Reactivity: | Human, Mouse |
| Host: | Mouse |
| Isotype: | IgG2a |
| Clonality: | Monoclonal |
| Immunogen: | Full length human recombinant protein of human TUBA1B(NP_006073) produced in HEK293T cell. |
| Formulation: | PBS (pH 7.3) containing 1% BSA, 50% glycerol and 0.02% sodium azide. |
| Concentration: | 1 mg/ml |
| Purification: | Purified from mouse ascites fluids or tissue culture supernatant by affinity chromatography (protein A/G) |
| Conjugation: | Unconjugated |
| Storage: | Store at -20°C as received. |
| Stability: | Stable for 12 months from date of receipt. |
| Predicted Protein Size: | 50 kDa |
| Gene Name: | tubulin alpha 1b |
| Database Link: | NP_006073 Entrez Gene 22143 Mouse Entrez Gene 10376 Human P68363 |
| Synonyms: | K-ALPHA-1 |
| Protein Families: | Druggable Genome |
| Protein Pathways: | Gap junction, Pathogenic Escherichia coli infection |


[View online »](#)

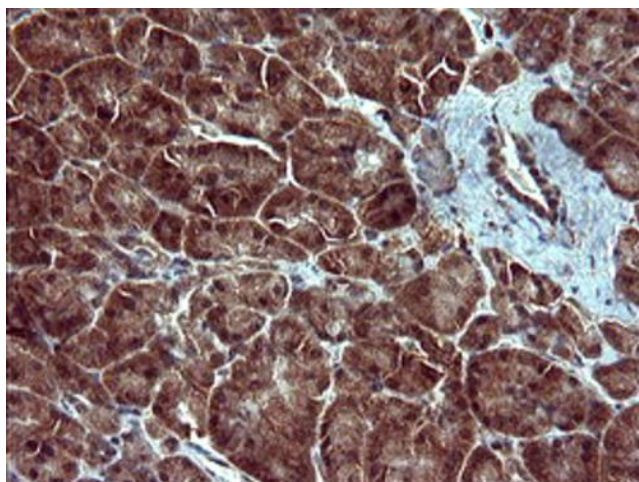
Product images:



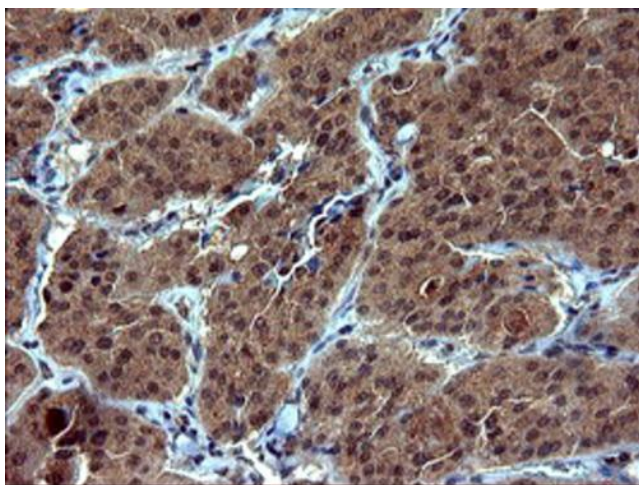
HEK293T cells were transfected with the pCMV6-ENTRY control (Cat# [PS100001], Left lane) or pCMV6-ENTRY TUBA1B (Cat# [RC205008], Right lane) cDNA for 48 hrs and lysed. Equivalent amounts of cell lysates (5 ug per lane) were separated by SDS-PAGE and immunoblotted with anti-TUBA1B (Cat# [TA506582]). Positive lysates [LY401831] (100ug) and [LC401831] (20ug) can be purchased separately from OriGene.



Immunohistochemical staining of paraffin-embedded Carcinoma of Human liver tissue using anti-TUBA1B mouse monoclonal antibody. ([TA506582]). Heat-induced epitope retrieval by EDTA solution buffer pH 8.0 at 120°C for 3 min.



Immunohistochemical staining of paraffin-embedded Human pancreas tissue within the normal limits using anti-TUBA1B mouse monoclonal antibody. ([TA506582]). Heat-induced epitope retrieval by EDTA solution buffer pH 8.0 at 120°C for 3 min.



Immunohistochemical staining of paraffin-embedded Carcinoma of Human thyroid tissue using anti-TUBA1B mouse monoclonal antibody. ([TA506582]). Heat-induced epitope retrieval by EDTA solution buffer pH 8.0 at 120°C for 3 min.