

Product datasheet for **TA506582AM**

Tubulin (TUBA1B) Mouse Monoclonal Antibody (Biotin conjugated) [Clone ID: OTI3G3]

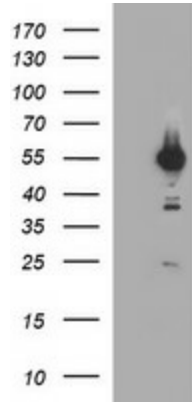
Product data:

Product Type:	Primary Antibodies
Clone Name:	OTI3G3
Applications:	IHC, WB
Recommended Dilution:	WB 1:4000, IHC: 1:150
Reactivity:	Human, Mouse
Host:	Mouse
Isotype:	IgG2a
Clonality:	Monoclonal
Immunogen:	Full length human recombinant protein of human TUBA1B(NP_006073) produced in HEK293T cell.
Formulation:	PBS (pH 7.3) containing 1% BSA, 50% glycerol and 0.02% sodium azide.
Concentration:	0.5 mg/ml
Purification:	Purified from mouse ascites fluids or tissue culture supernatant by affinity chromatography (protein A/G)
Conjugation:	Biotin
Storage:	Store at -20°C as received.
Stability:	Stable for 12 months from date of receipt.
Predicted Protein Size:	50 kDa
Gene Name:	tubulin alpha 1b
Database Link:	NP_006073 Entrez Gene 22143 Mouse Entrez Gene 10376 Human P68363
Synonyms:	K-ALPHA-1
Protein Families:	Druggable Genome
Protein Pathways:	Gap junction, Pathogenic Escherichia coli infection

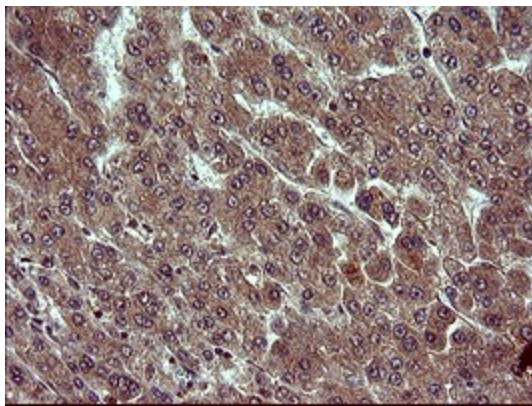


[View online »](#)

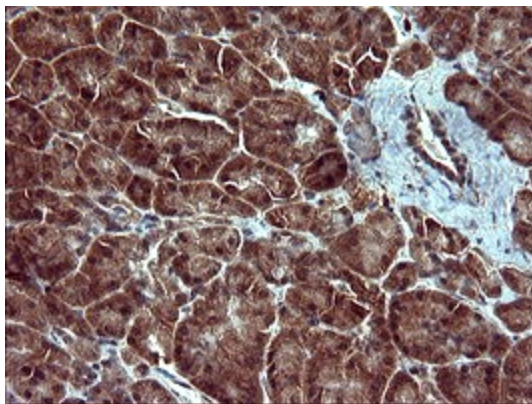
Product images:



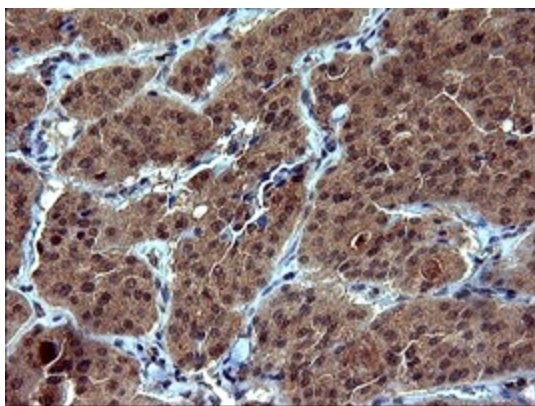
HEK293T cells were transfected with the pCMV6-ENTRY control (Cat# [PS100001], Left lane) or pCMV6-ENTRY TUBA1B (Cat# [RC205008], Right lane) cDNA for 48 hrs and lysed. Equivalent amounts of cell lysates (5 ug per lane) were separated by SDS-PAGE and immunoblotted with anti-TUBA1B(Cat# [TA506582]). Positive lysates [LY401831] (100ug) and [LC401831] (20ug) can be purchased separately from OriGene.



Immunohistochemical staining of paraffin-embedded Carcinoma of Human liver tissue using anti-TUBA1B mouse monoclonal antibody. ([TA506582])



Immunohistochemical staining of paraffin-embedded Human pancreas tissue within the normal limits using anti-TUBA1B mouse monoclonal antibody. ([TA506582])



Immunohistochemical staining of paraffin-embedded Carcinoma of Human thyroid tissue using anti-TUBA1B mouse monoclonal antibody. (TA506582)