

## Product datasheet for **TA506581AM**

### Tubulin (TUBA1B) Mouse Monoclonal Antibody (Biotin conjugated) [Clone ID: OTI3H2]

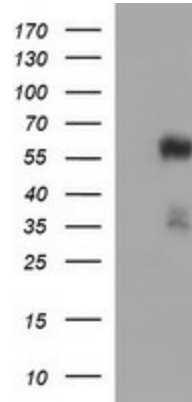
#### Product data:

Product Type:	Primary Antibodies
Clone Name:	OTI3H2
Applications:	WB
Recommended Dilution:	WB 1:2000
Reactivity:	Human, Mouse
Host:	Mouse
Isotype:	IgG2a
Clonality:	Monoclonal
Immunogen:	Full length human recombinant protein of human TUBA1B(NP_006073) produced in HEK293T cell.
Formulation:	PBS (pH 7.3) containing 1% BSA, 50% glycerol and 0.02% sodium azide.
Concentration:	0.5 mg/ml
Purification:	Purified from mouse ascites fluids or tissue culture supernatant by affinity chromatography (protein A/G)
Conjugation:	Biotin
Storage:	Store at -20°C as received.
Stability:	Stable for 12 months from date of receipt.
Predicted Protein Size:	50 kDa
Gene Name:	tubulin alpha 1b
Database Link:	<a href="#">NP_006073</a> <a href="#">Entrez Gene 22143 Mouse</a> <a href="#">Entrez Gene 10376 Human</a> <a href="#">P68363</a>
Synonyms:	K-ALPHA-1
Protein Families:	Druggable Genome
Protein Pathways:	Gap junction, Pathogenic Escherichia coli infection



[View online »](#)

## Product images:



HEK293T cells were transfected with the pCMV6-ENTRY control (Left lane) or pCMV6-ENTRY TUBA1B ([RC205008], Right lane) cDNA for 48 hrs and lysed. Equivalent amounts of cell lysates (5 ug per lane) were separated by SDS-PAGE and immunoblotted with anti-TUBA1B. Positive lysates [LY401831] (100ug) and [LC401831] (20ug) can be purchased separately from OriGene.