

Product datasheet for **TA506559BM**

CD45 (PTPRC) Mouse Monoclonal Antibody (HRP conjugated) [Clone ID: OTI3F2]

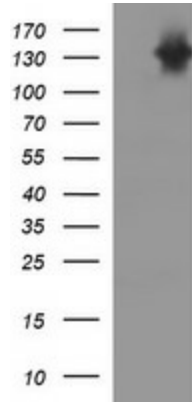
Product data:

Product Type:	Primary Antibodies
Clone Name:	OTI3F2
Applications:	IHC, WB
Recommended Dilution:	WB 1:400~4000, IHC 1:500
Reactivity:	Human
Host:	Mouse
Isotype:	IgG1
Clonality:	Monoclonal
Immunogen:	Full length human recombinant protein of human PTPRC(NP_002829) produced in HEK293T cell.
Formulation:	PBS (pH 7.3) containing 1% BSA, 50% glycerol.
Concentration:	0.5 mg/ml
Purification:	Purified from mouse ascites fluids or tissue culture supernatant by affinity chromatography (protein A/G)
Conjugation:	HRP
Storage:	Store at -20°C as received.
Stability:	Stable for 12 months from date of receipt.
Gene Name:	protein tyrosine phosphatase receptor type C
Database Link:	NP_002829 Entrez Gene 5788 Human P08575
Synonyms:	B220; CD45; CD45R; GP180; L-CA; LCA; LY5; T200
Protein Families:	Druggable Genome, ES Cell Differentiation/IPS, Phosphatase, Transmembrane
Protein Pathways:	Cell adhesion molecules (CAMs), Fc gamma R-mediated phagocytosis, Primary immunodeficiency, T cell receptor signaling pathway

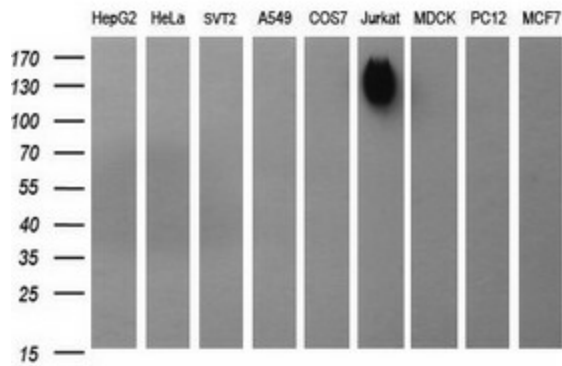


[View online »](#)

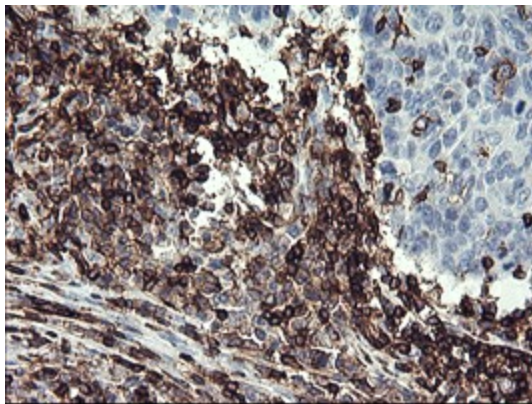
Product images:



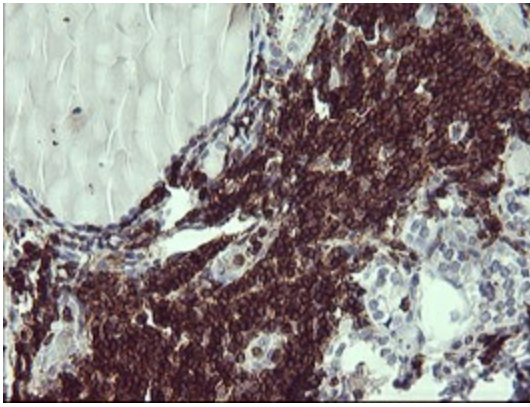
HEK293T cells were transfected with the pCMV6-ENTRY control (Left lane) or pCMV6-ENTRY PTPRC ([RC216590], Right lane) cDNA for 48 hrs and lysed. Equivalent amounts of cell lysates (5 ug per lane) were separated by SDS-PAGE and immunoblotted with anti-PTPRC. Positive lysates [LY401003] (100ug) and [LC401003] (20ug) can be purchased separately from OriGene.



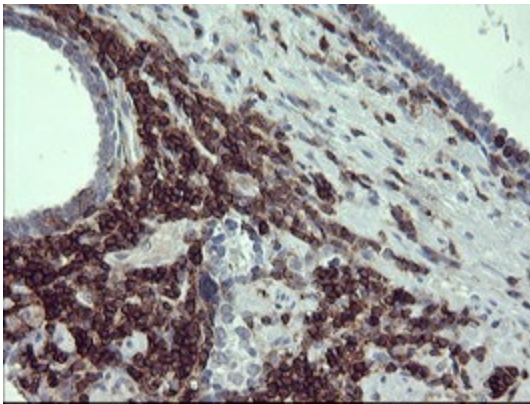
Western blot analysis of extracts (35ug) from 9 different cell lines by using anti-PTPRC monoclonal antibody (HepG2: human; HeLa: human; SVT2: mouse; A549: human; COS7: monkey; Jurkat: human; MDCK: canine; PC12: rat; MCF7: human).



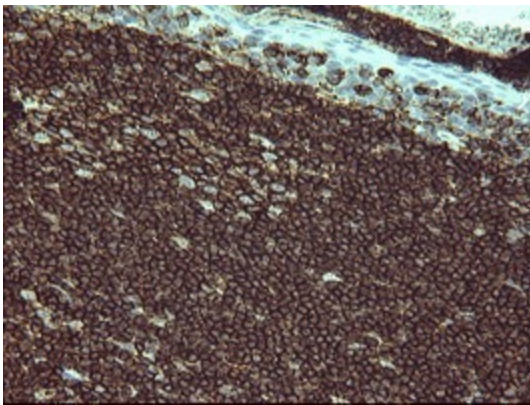
Immunohistochemical staining of paraffin-embedded Carcinoma of Human lung tissue using anti-PTPRC mouse monoclonal antibody. (Heat-induced epitope retrieval by 10mM citric buffer, pH6.0, 120°C for 3min, [TA506559])



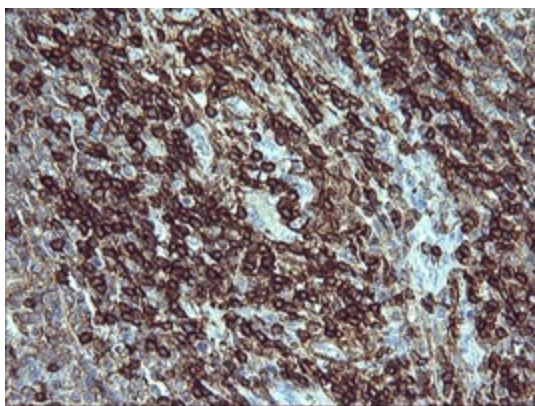
Immunohistochemical staining of paraffin-embedded Human thyroid tissue within the normal limits using anti-PTPRC mouse monoclonal antibody. (Heat-induced epitope retrieval by 10mM citric buffer, pH6.0, 120°C for 3min, [TA506559])



Immunohistochemical staining of paraffin-embedded Carcinoma of Human prostate tissue using anti-PTPRC mouse monoclonal antibody. (Heat-induced epitope retrieval by 10mM citric buffer, pH6.0, 120°C for 3min, [TA506559])



Immunohistochemical staining of paraffin-embedded Human lymph node tissue within the normal limits using anti-PTPRC mouse monoclonal antibody. (Heat-induced epitope retrieval by 10mM citric buffer, pH6.0, 120°C for 3min, [TA506559])



Immunohistochemical staining of paraffin-embedded Human lymphoma tissue using anti-PTPRC mouse monoclonal antibody. (Heat-induced epitope retrieval by 10mM citric buffer, pH6.0, 120°C for 3min, [TA506559])