

## Product datasheet for **TA506553BM**

### Tyrosine Hydroxylase (TH) Mouse Monoclonal Antibody (HRP conjugated) [Clone ID: OTI1D8]

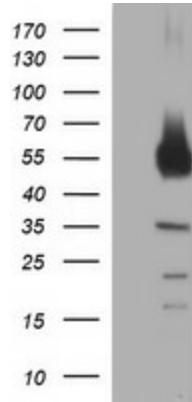
#### Product data:

|                         |   |
|-------------------------|---|
| Product Type:           | Primary Antibodies  |
| Clone Name:             | OTI1D8  |
| Applications:           | IF, WB  |
| Recommended Dilution:   | WB 1:4000, IF 1:100   |
| Reactivity:             | Human, Mouse, Rat   |
| Host:                   | Mouse   |
| Isotype:                | IgG1  |
| Clonality:              | Monoclonal  |
| Immunogen:              | Full length human recombinant protein of human TH(NP_000351) produced in HEK293T cell.  |
| Formulation:            | PBS (pH 7.3) containing 1% BSA, 50% glycerol.   |
| Concentration:          | 0.5 mg/ml   |
| Purification:           | Purified from mouse ascites fluids or tissue culture supernatant by affinity chromatography (protein A/G)   |
| Conjugation:            | HRP   |
| Storage:                | Store at -20°C as received.   |
| Stability:              | Stable for 12 months from date of receipt.  |
| Predicted Protein Size: | 55.4 kDa  |
| Gene Name:              | tyrosine hydroxylase  |
| Database Link:          | <a href="#">NP_000351</a><br><a href="#">Entrez Gene 21823 Mouse</a> <a href="#">Entrez Gene 25085 Rat</a> <a href="#">Entrez Gene 7054 Human</a><br><a href="#">P07101</a> |
| Synonyms:               | DYT5b; DYT14; TYH   |
| Protein Families:       | Druggable Genome  |
| Protein Pathways:       | Metabolic pathways, Parkinson's disease, Tyrosine metabolism  |

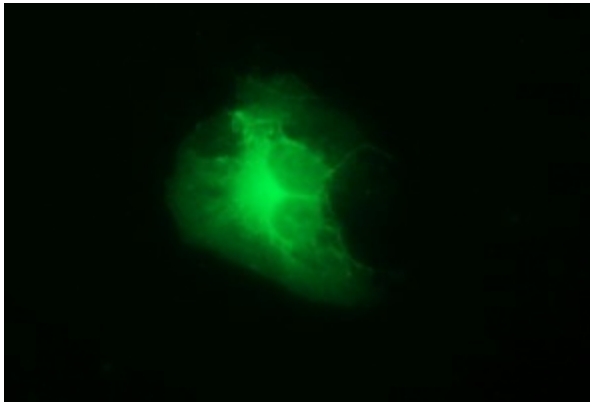


[View online »](#)

## Product images:



HEK293T cells were transfected with the pCMV6-ENTRY control (Left lane) or pCMV6-ENTRY TH ([RC211218], Right lane) cDNA for 48 hrs and lysed. Equivalent amounts of cell lysates (5 ug per lane) were separated by SDS-PAGE and immunoblotted with anti-TH. Positive lysates [LY424777] (100ug) and [LC424777] (20ug) can be purchased separately from OriGene.



Anti-TH mouse monoclonal antibody ([TA506553]) immunofluorescent staining of COS7 cells transiently transfected by pCMV6-ENTRY TH ([RC211218]).