

Product datasheet for **TA506510BM**

TNF alpha (TNF) Mouse Monoclonal Antibody (HRP conjugated) [Clone ID: OTI1D9]

Product data:

Product Type:	Primary Antibodies
Clone Name:	OTI1D9
Applications:	IHC, WB
Recommended Dilution:	WB 1:4000, IHC 1:150
Reactivity:	Human
Host:	Mouse
Isotype:	IgG2a
Clonality:	Monoclonal
Immunogen:	Full length human recombinant protein of human TNF(NP_000585) produced in HEK293T cell.
Formulation:	PBS (pH 7.3) containing 1% BSA, 50% glycerol.
Concentration:	0.5 mg/ml
Purification:	Purified from mouse ascites fluids or tissue culture supernatant by affinity chromatography (protein A/G)
Conjugation:	HRP
Storage:	Store at -20°C as received.
Stability:	Stable for 12 months from date of receipt.
Predicted Protein Size:	25.5 kDa
Gene Name:	tumor necrosis factor
Database Link:	NP_000585 Entrez Gene 7124 Human P01375



[View online »](#)

Background:

This gene encodes a multifunctional proinflammatory cytokine that belongs to the tumor necrosis factor (TNF) superfamily. This cytokine is mainly secreted by macrophages. It can bind to, and thus functions through its receptors TNFRSF1A/TNFR1 and TNFRSF1B/TNFR. This cytokine is involved in the regulation of a wide spectrum of biological processes including cell proliferation, differentiation, apoptosis, lipid metabolism, and coagulation. This cytokine has been implicated in a variety of diseases, including autoimmune diseases, insulin resistance, and cancer. Knockout studies in mice also suggested the neuroprotective function of this cytokine. [provided by RefSeq, Jul 2008]

Synonyms:

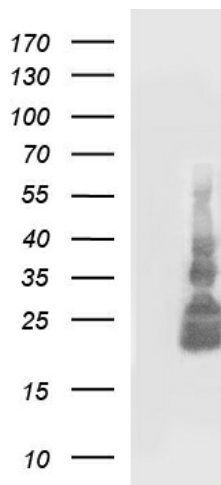
DIF; TNF-alpha; TNFA; TNFSF2

Protein Families:

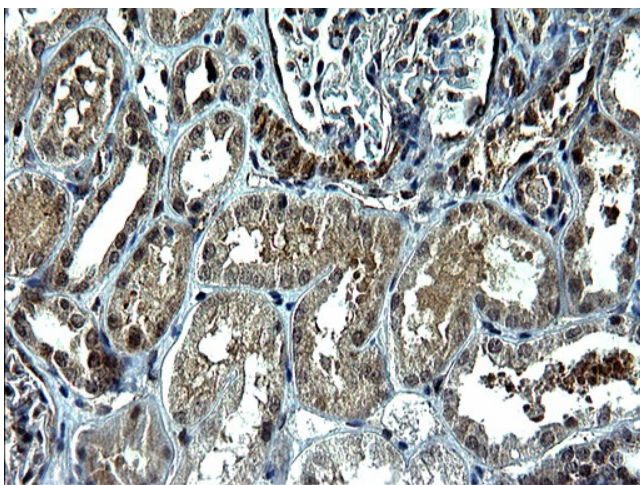
Druggable Genome, Secreted Protein, Transcription Factors, Transmembrane

Protein Pathways:

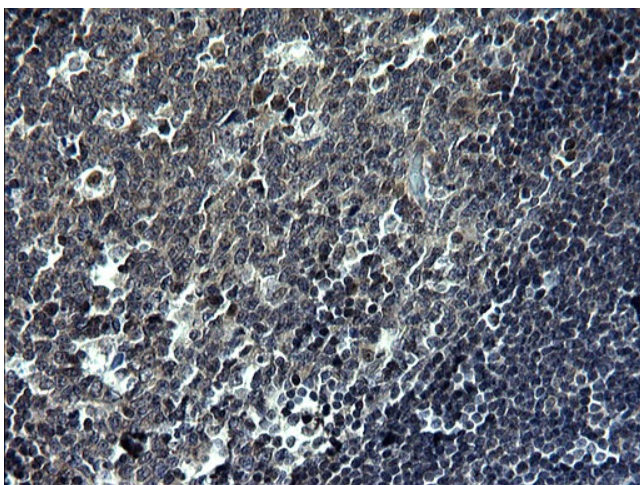
Adipocytokine signaling pathway, Allograft rejection, Alzheimer's disease, Amyotrophic lateral sclerosis (ALS), Apoptosis, Asthma, Cytokine-cytokine receptor interaction, Dilated cardiomyopathy, Fc epsilon RI signaling pathway, Graft-versus-host disease, Hematopoietic cell lineage, Hypertrophic cardiomyopathy (HCM), MAPK signaling pathway, Natural killer cell mediated cytotoxicity, NOD-like receptor signaling pathway, RIG-I-like receptor signaling pathway, Systemic lupus erythematosus, T cell receptor signaling pathway, TGF-beta signaling pathway, Toll-like receptor signaling pathway, Type I diabetes mellitus, Type II diabetes mellitus

Product images:

HEK293T cells were transfected with the pCMV6-ENTRY control (Left lane) or pCMV6-ENTRY TNF ([RC206983], Right lane) cDNA for 48 hrs and lysed. Equivalent amounts of cell lysates (5 ug per lane) were separated by SDS-PAGE and immunoblotted with anti-TNF. Positive lysates [LY424626] (100ug) and [LC424626] (20ug) can be purchased separately from OriGene.



Immunohistochemical staining of paraffin-embedded Human Kidney tissue within the normal limits using anti-TNF mouse monoclonal antibody. (Heat-induced epitope retrieval by 1mM EDTA in 10mM Tris, pH8.5, 120°C for 3min, [TA506510])



Immunohistochemical staining of paraffin-embedded Human lymph node tissue within the normal limits using anti-TNF mouse monoclonal antibody. (Heat-induced epitope retrieval by 1mM EDTA in 10mM Tris, pH8.5, 120°C for 3min, [TA506510])