

## Product datasheet for **TA506495S**

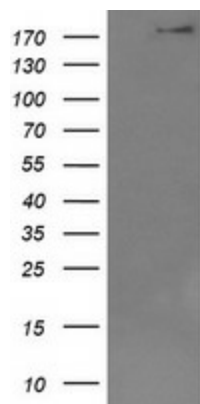
### DOCK8 Mouse Monoclonal Antibody [Clone ID: OTI5C4]

#### Product data:

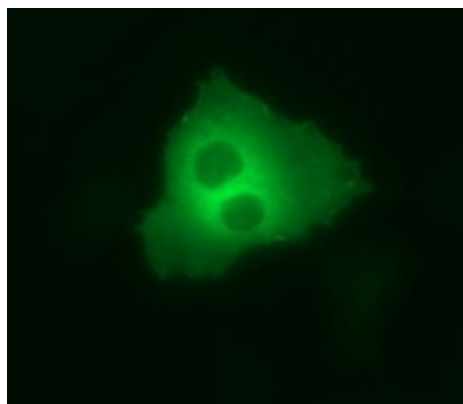
|                         |   |
|-------------------------|---|
| Product Type:           | Primary Antibodies  |
| Clone Name:             | OTI5C4  |
| Applications:           | IF, WB  |
| Recommended Dilution:   | WB 1:4000, IF 1:100   |
| Reactivity:             | Human, Mouse, Rat   |
| Host:                   | Mouse   |
| Isotype:                | IgG1  |
| Clonality:              | Monoclonal  |
| Immunogen:              | Human recombinant protein fragment corresponding to amino acids 833-1160 of human DOCK8(NP_982272) produced in HEK293T cell.  |
| Formulation:            | PBS (pH 7.3) containing 1% BSA, 50% glycerol and 0.02% sodium azide.  |
| Concentration:          | 1 mg/ml   |
| Purification:           | Purified from mouse ascites fluids or tissue culture supernatant by affinity chromatography (protein A/G)   |
| Conjugation:            | Unconjugated  |
| Storage:                | Store at -20°C as received.   |
| Stability:              | Stable for 12 months from date of receipt.  |
| Predicted Protein Size: | 238.3 kDa   |
| Gene Name:              | dedicator of cytokinesis 8  |
| Database Link:          | <a href="#">NP_982272</a><br><a href="#">Entrez Gene 76088 Mouse</a> <a href="#">Entrez Gene 499337 Rat</a> <a href="#">Entrez Gene 81704 Human</a><br><a href="#">Q8NF50</a> |
| Synonyms:               | HEL-205; MRD2; ZIR8   |



[View online »](#)

**Product images:**

HEK293T cells were transfected with the pCMV6-ENTRY control (Left lane) or pCMV6-ENTRY DOCK8 ([RC222789], Right lane) cDNA for 48 hrs and lysed. Equivalent amounts of cell lysates (5 ug per lane) were separated by SDS-PAGE and immunoblotted with anti-DOCK8. Positive lysates [LY404295] (100ug) and [LC404295] (20ug) can be purchased separately from OriGene.



Anti-DOCK8 mouse monoclonal antibody ([TA506495]) immunofluorescent staining of COS7 cells transiently transfected by pCMV6-ENTRY DOCK8 ([RC222789]).