

Product datasheet for **TA506430BM**

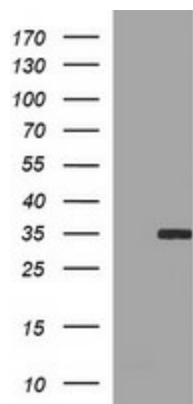
SNAIL (SNAI1) Mouse Monoclonal Antibody (HRP conjugated) [Clone ID: OTI1H7]

Product data:

| | |
|-------------------------|--|
| Product Type: | Primary Antibodies |
| Clone Name: | OTI1H7 |
| Applications: | WB |
| Recommended Dilution: | WB 1:1000 |
| Reactivity: | Human, Mouse, Rat |
| Host: | Mouse |
| Isotype: | IgG1 |
| Clonality: | Monoclonal |
| Immunogen: | Full length human recombinant protein of human SNAI1(NP_005976) produced in HEK293T cell. |
| Formulation: | PBS (pH 7.3) containing 1% BSA, 50% glycerol. |
| Concentration: | 0.5 mg/ml |
| Purification: | Purified from mouse ascites fluids or tissue culture supernatant by affinity chromatography (protein A/G) |
| Conjugation: | HRP |
| Storage: | Store at -20°C as received. |
| Stability: | Stable for 12 months from date of receipt. |
| Predicted Protein Size: | 28.9 kDa |
| Gene Name: | snail family transcriptional repressor 1 |
| Database Link: | NP_005976 Entrez Gene 20613 Mouse Entrez Gene 116490 Rat Entrez Gene 6615 Human O95863 |
| Synonyms: | dj710H13.1; SLUGH2; SNA; SNAH; SNAIL; SNAIL1 |
| Protein Families: | Druggable Genome |
| Protein Pathways: | Adherens junction |



[View online »](#)

Product images:

HEK293T cells were transfected with the pCMV6-ENTRY control (Left lane) or pCMV6-ENTRY SNAI1 ([RC204581], Right lane) cDNA for 48 hrs and lysed. Equivalent amounts of cell lysates (5 ug per lane) were separated by SDS-PAGE and immunoblotted with anti-SNAI1. Positive lysates [LY401811] (100ug) and [LC401811] (20ug) can be purchased separately from OriGene.