

Product datasheet for **TA506407BM**

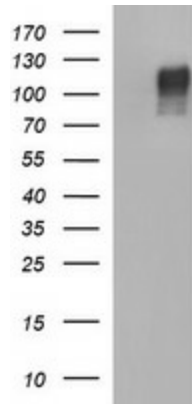
CD22 Mouse Monoclonal Antibody (HRP conjugated) [Clone ID: OTI1F12]

Product data:

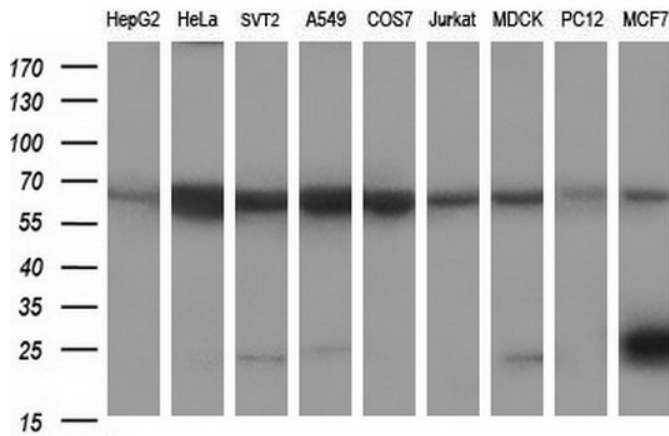
Product Type:	Primary Antibodies
Clone Name:	OTI1F12
Applications:	IF, WB
Recommended Dilution:	WB 1:400~4000, IF 1:100
Reactivity:	Human, Dog, Rat, Monkey, Mouse
Host:	Mouse
Isotype:	IgG1
Clonality:	Monoclonal
Immunogen:	Full length human recombinant protein of human CD22(NP_001762) produced in HEK293T cell.
Formulation:	PBS (pH 7.3) containing 1% BSA, 50% glycerol.
Concentration:	0.5 mg/ml
Purification:	Purified from mouse ascites fluids or tissue culture supernatant by affinity chromatography (protein A/G)
Conjugation:	HRP
Storage:	Store at -20°C as received.
Stability:	Stable for 12 months from date of receipt.
Gene Name:	CD22 molecule
Database Link:	NP_001762 Entrez Gene 12483 Mouse Entrez Gene 308501 Rat Entrez Gene 476485 Dog Entrez Gene 106994739 Monkey Entrez Gene 933 Human P20273
Synonyms:	SIGLEC-2; SIGLEC2
Protein Families:	Druggable Genome, Transmembrane
Protein Pathways:	B cell receptor signaling pathway, Cell adhesion molecules (CAMs), Hematopoietic cell lineage



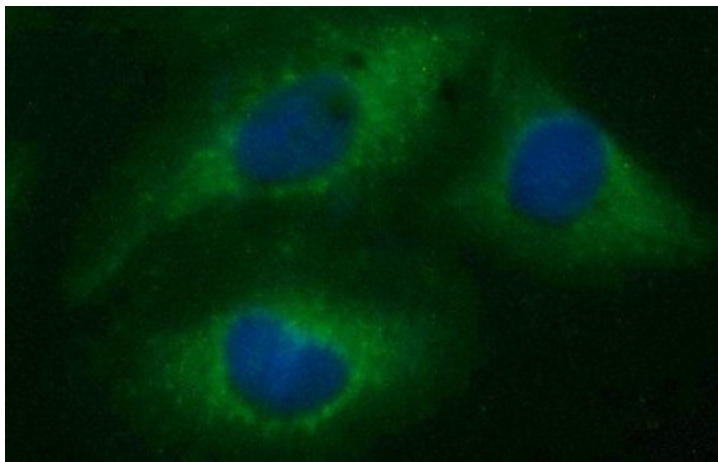
[View online »](#)

Product images:


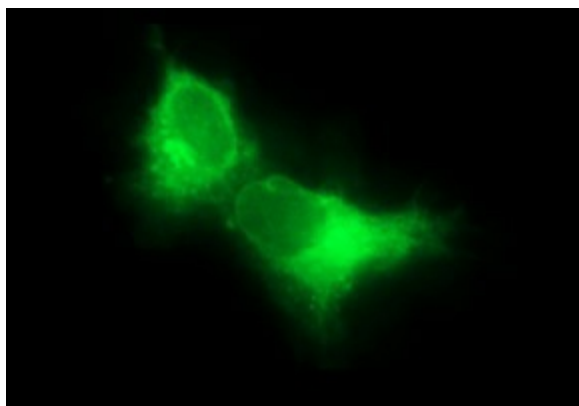
HEK293T cells were transfected with the pCMV6-ENTRY control (Cat# [PS100001], Left lane) or pCMV6-ENTRY CD22 (Cat# [RC216939], Right lane) cDNA for 48 hrs and lysed. Equivalent amounts of cell lysates (5 ug per lane) were separated by SDS-PAGE and immunoblotted with anti-CD22(Cat# [TA506407]).



Western blot analysis of extracts (35ug) from 9 different cell lines by using anti-CD22 monoclonal antibody (HepG2: human; HeLa: human; SVT2: mouse; A549: human; COS7: monkey; Jurkat: human; MDCK: canine; PC12: rat; MCF7: human).



Immunofluorescent staining of HeLa cells using anti-CD22 mouse monoclonal antibody ([TA506407]).



Anti-CD22 mouse monoclonal antibody ([TA506407]) immunofluorescent staining of COS7 cells transiently transfected by pCMV6-ENTRY CD22 ([RC216939]).