

## Product datasheet for **TA506404AM**

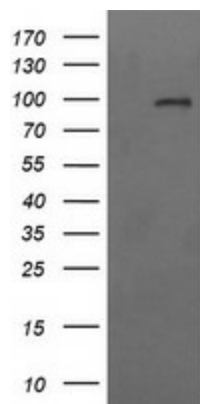
### CD22 Mouse Monoclonal Antibody (Biotin conjugated) [Clone ID: OTI1F2]

#### Product data:

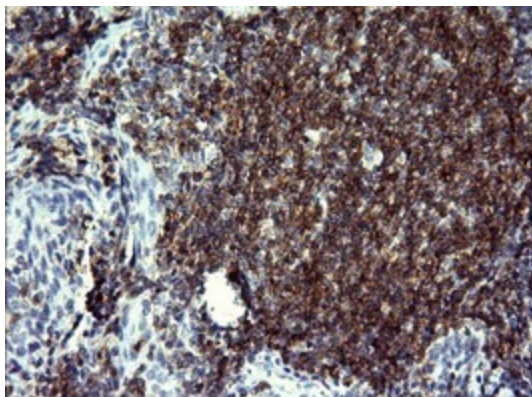
Product Type:	Primary Antibodies
Clone Name:	OTI1F2
Applications:	IHC, WB
Recommended Dilution:	WB 1:2000, IHC 1:150
Reactivity:	Human
Host:	Mouse
Isotype:	IgG1
Clonality:	Monoclonal
Immunogen:	Full length human recombinant protein of human CD22(NP_001762) produced in HEK293T cell.
Formulation:	PBS (pH 7.3) containing 1% BSA, 50% glycerol and 0.02% sodium azide.
Concentration:	0.5 mg/ml
Purification:	Purified from mouse ascites fluids or tissue culture supernatant by affinity chromatography (protein A/G)
Conjugation:	Biotin
Storage:	Store at -20°C as received.
Stability:	Stable for 12 months from date of receipt.
Gene Name:	CD22 molecule
Database Link:	<a href="#">NP_001762</a> <a href="#">Entrez Gene 933 Human</a> <a href="#">P20273</a>
Synonyms:	SIGLEC-2; SIGLEC2
Protein Families:	Druggable Genome, Transmembrane
Protein Pathways:	B cell receptor signaling pathway, Cell adhesion molecules (CAMs), Hematopoietic cell lineage



[View online »](#)

**Product images:**

HEK293T cells were transfected with the pCMV6-ENTRY control (Left lane) or pCMV6-ENTRY CD22 ([RC216939], Right lane) cDNA for 48 hrs and lysed. Equivalent amounts of cell lysates (5 ug per lane) were separated by SDS-PAGE and immunoblotted with anti-CD22.



Immunohistochemical staining of paraffin-embedded Human lymph node tissue within the normal limits using anti-CD22 mouse monoclonal antibody. (Heat-induced epitope retrieval by 10mM citric buffer, pH6.0, 120°C for 3min, [TA506404])