

## Product datasheet for **TA506403S**

### P cadherin (CDH3) Mouse Monoclonal Antibody [Clone ID: OTI2D5]

#### Product data:

Product Type:	Primary Antibodies
Clone Name:	OTI2D5
Applications:	IF, IHC, WB
Recommended Dilution:	WB 1:4000, IHC 1:150, IF 1:100
Reactivity:	Human
Host:	Mouse
Isotype:	IgG2a
Clonality:	Monoclonal
Immunogen:	Full length human recombinant protein of human CDH3(NP_001784) produced in HEK293T cell.
Formulation:	PBS (pH 7.3) containing 1% BSA, 50% glycerol and 0.02% sodium azide.
Concentration:	1 mg/ml
Purification:	Purified from mouse ascites fluids or tissue culture supernatant by affinity chromatography (protein A/G)
Conjugation:	Unconjugated
Storage:	Store at -20°C as received.
Stability:	Stable for 12 months from date of receipt.
Predicted Protein Size:	88.8 kDa
Gene Name:	cadherin 3
Database Link:	<a href="#">NP_001784</a> <a href="#">Entrez Gene 1001 Human</a> <a href="#">P22223</a>



[View online »](#)

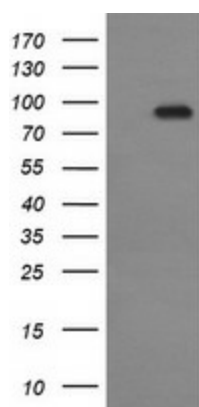
**Background:** This gene is a classical cadherin from the cadherin superfamily. The encoded protein is a calcium-dependent cell-cell adhesion glycoprotein comprised of five extracellular cadherin repeats, a transmembrane region and a highly conserved cytoplasmic tail. This gene is located in a six-cadherin cluster in a region on the long arm of chromosome 16 that is involved in loss of heterozygosity events in breast and prostate cancer. In addition, aberrant expression of this protein is observed in cervical adenocarcinomas. Mutations in this gene have been associated with congenital hypotrichosis with juvenile macular dystrophy. [provided by RefSeq, Jul 2008]

**Synonyms:** CDHP; HJMD; PCAD

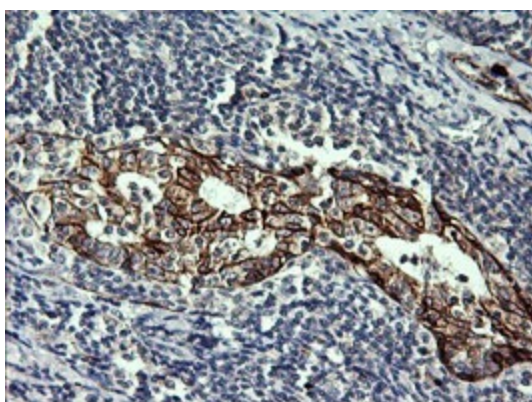
**Protein Families:** Druggable Genome, Transmembrane

**Protein Pathways:** Cell adhesion molecules (CAMs)

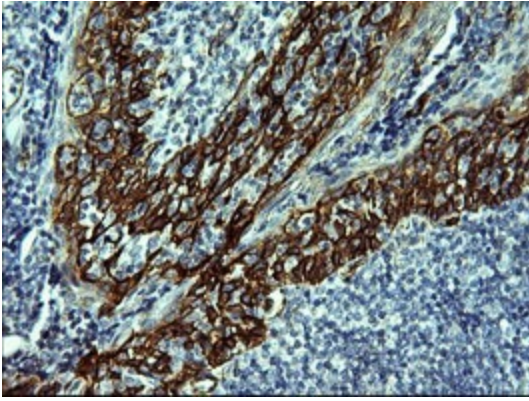
### Product images:



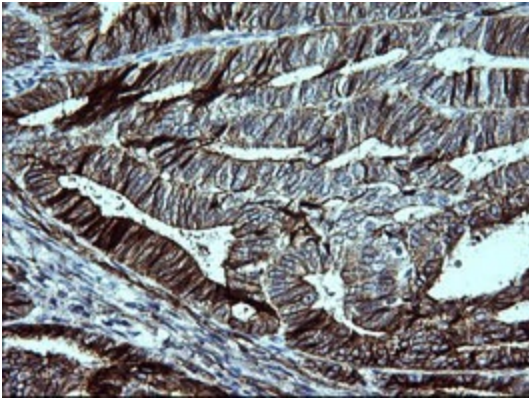
HEK293T cells were transfected with the pCMV6-ENTRY control (Cat# [PS100001], Left lane) or pCMV6-ENTRY CDH3 (Cat# [RC207346], Right lane) cDNA for 48 hrs and lysed. Equivalent amounts of cell lysates (5 ug per lane) were separated by SDS-PAGE and immunoblotted with anti-CDH3 (Cat# [TA506403]). Positive lysates [LY400683] (100ug) and [LC400683] (20ug) can be purchased separately from OriGene.



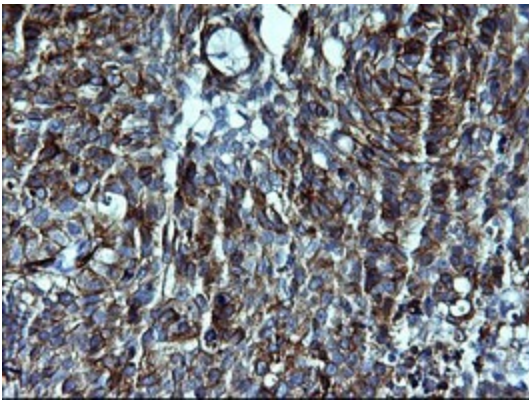
Immunohistochemical staining of paraffin-embedded Human lymphoma tissue using anti-CDH3 mouse monoclonal antibody. (Heat-induced epitope retrieval by 10mM citric buffer, pH6.0, 120°C for 3min, [TA506403])



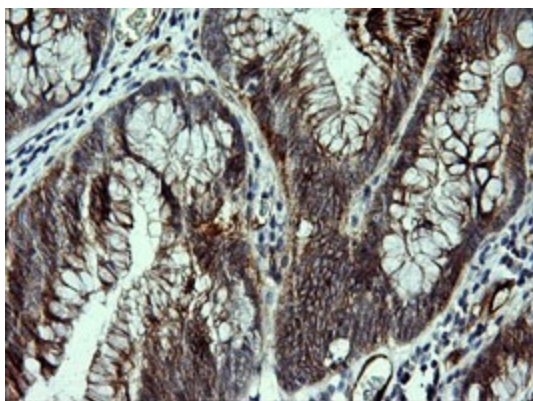
Immunohistochemical staining of paraffin-embedded Human lymph node tissue within the normal limits using anti-CDH3 mouse monoclonal antibody. (Heat-induced epitope retrieval by 10mM citric buffer, pH6.0, 120°C for 3min, [TA506403])



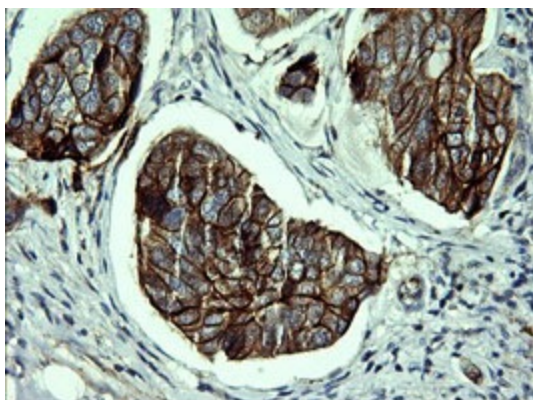
Immunohistochemical staining of paraffin-embedded Adenocarcinoma of Human endometrium tissue using anti-CDH3 mouse monoclonal antibody. (Heat-induced epitope retrieval by 10mM citric buffer, pH6.0, 120°C for 3min, [TA506403])



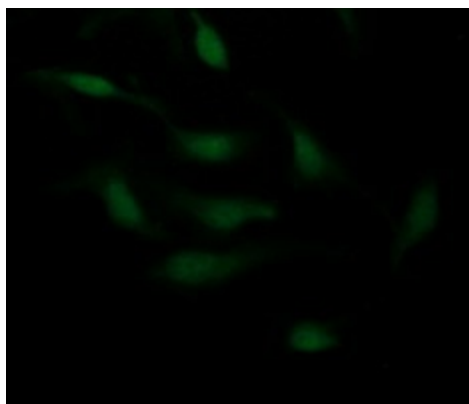
Immunohistochemical staining of paraffin-embedded Carcinoma of Human lung tissue using anti-CDH3 mouse monoclonal antibody. (Heat-induced epitope retrieval by 10mM citric buffer, pH6.0, 120°C for 3min, [TA506403])



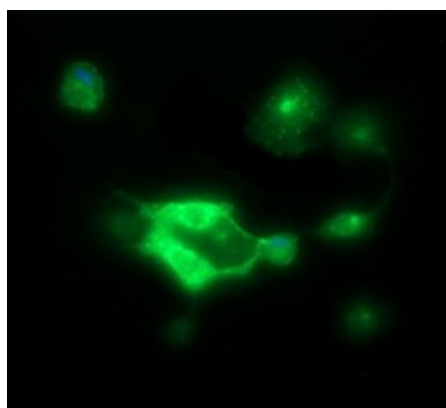
Immunohistochemical staining of paraffin-embedded Adenocarcinoma of Human colon tissue using anti-CDH3 mouse monoclonal antibody. (Heat-induced epitope retrieval by 10mM citric buffer, pH6.0, 120°C for 3min, [TA506403])



Immunohistochemical staining of paraffin-embedded Adenocarcinoma of Human breast tissue using anti-CDH3 mouse monoclonal antibody. (Heat-induced epitope retrieval by 10mM citric buffer, pH6.0, 120°C for 3min, [TA506403])



Immunofluorescent staining of HeLa cells using anti-CDH3 mouse monoclonal antibody ([TA506403]).



Anti-CDH3 mouse monoclonal antibody ([TA506403]) immunofluorescent staining of COS7 cells transiently transfected by pCMV6-ENTRY CDH3 ([RC207346]).