

## Product datasheet for **TA506401BM**

### Galectin 3 (LGALS3) Mouse Monoclonal Antibody (HRP conjugated) [Clone ID: OTI1A1]

#### Product data:

Product Type:	Primary Antibodies
Clone Name:	OTI1A1
Applications:	IHC, WB
Recommended Dilution:	WB 1:2000, IHC 1:150
Reactivity:	Human, Mouse
Host:	Mouse
Isotype:	IgG1
Clonality:	Monoclonal
Immunogen:	Full length human recombinant protein of human LGALS3(NP_002297) produced in HEK293T cell.
Formulation:	PBS (pH 7.3) containing 1% BSA, 50% glycerol.
Concentration:	0.5 mg/ml
Purification:	Purified from mouse ascites fluids or tissue culture supernatant by affinity chromatography (protein A/G)
Conjugation:	HRP
Storage:	Store at -20°C as received.
Stability:	Stable for 12 months from date of receipt.
Predicted Protein Size:	26 kDa
Gene Name:	galectin 3
Database Link:	<a href="#">NP_002297</a> <a href="#">Entrez Gene 16854 Mouse</a> <a href="#">Entrez Gene 3958 Human</a> <a href="#">P17931</a>



[View online »](#)

**Background:**

This gene encodes a member of the galectin family of carbohydrate binding proteins. Members of this protein family have an affinity for beta-galactosides. The encoded protein is characterized by an N-terminal proline-rich tandem repeat domain and a single C-terminal carbohydrate recognition domain. This protein can self-associate through the N-terminal domain allowing it to bind to multivalent saccharide ligands. This protein localizes to the extracellular matrix, the cytoplasm and the nucleus. This protein plays a role in numerous cellular functions including apoptosis, innate immunity, cell adhesion and T-cell regulation. Alternate splicing results in multiple transcript variants. [provided by RefSeq, Apr 2010]

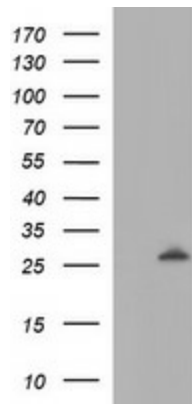
**Synonyms:**

CBP35; GAL3; GALBP; GALIG; L31; LGALS2; MAC2

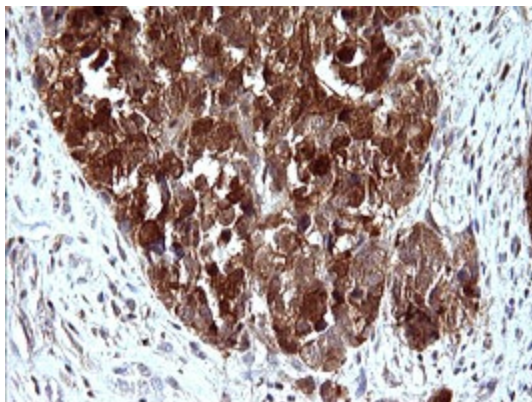
**Protein Families:**

Secreted Protein

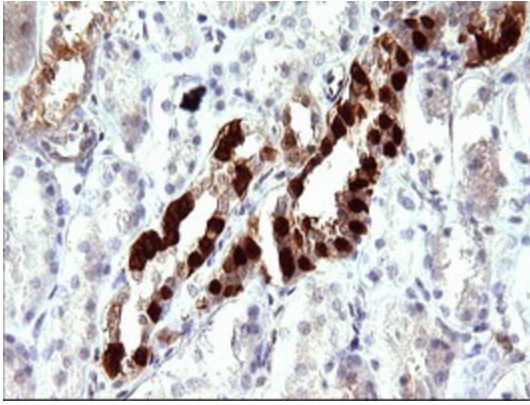
**Product images:**



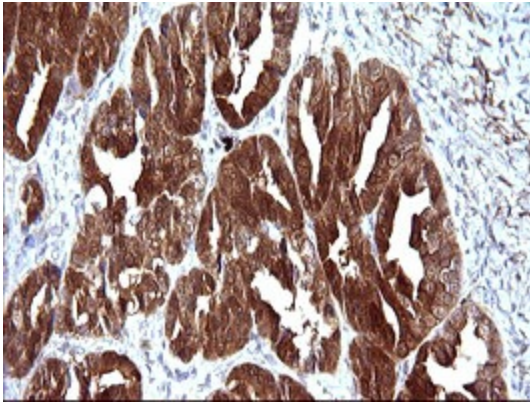
HEK293T cells were transfected with the pCMV6-ENTRY control (Left lane) or pCMV6-ENTRY LGALS3 ([RC208785], Right lane) cDNA for 48 hrs and lysed. Equivalent amounts of cell lysates (5 ug per lane) were separated by SDS-PAGE and immunoblotted with anti-LGALS3. Positive lysates [LY400834] (100ug) and [LC400834] (20ug) can be purchased separately from OriGene.



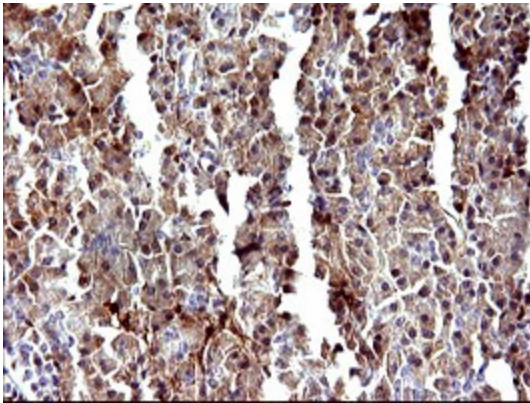
Immunohistochemical staining of paraffin-embedded Adenocarcinoma of Human colon tissue using anti-LGALS3 mouse monoclonal antibody ([TA506401]) at 1:150 dilution.



Immunohistochemical staining of paraffin-embedded Human Kidney tissue within the normal limits using anti-LGALS3 mouse monoclonal antibody ([TA506401]) at 1:150 dilution.

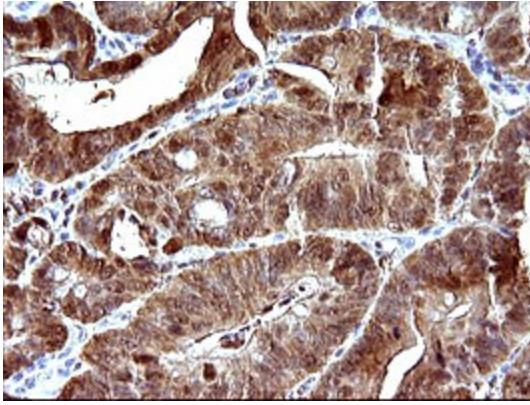


Immunohistochemical staining of paraffin-embedded Adenocarcinoma of Human ovary tissue using anti-LGALS3 mouse monoclonal antibody ([TA506401]) at 1:150 dilution.

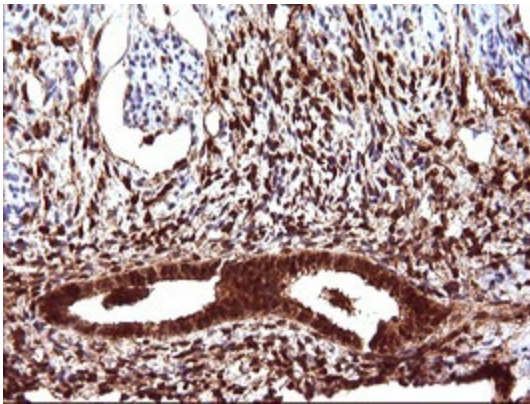


Immunohistochemical staining of paraffin-embedded Human pancreas tissue within the normal limits using anti-LGALS3 mouse monoclonal antibody ([TA506401]) at 1:150 dilution.

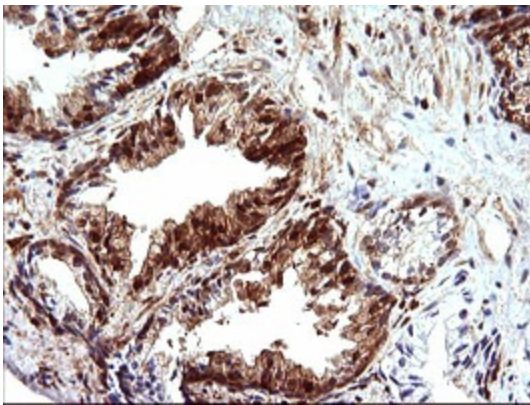




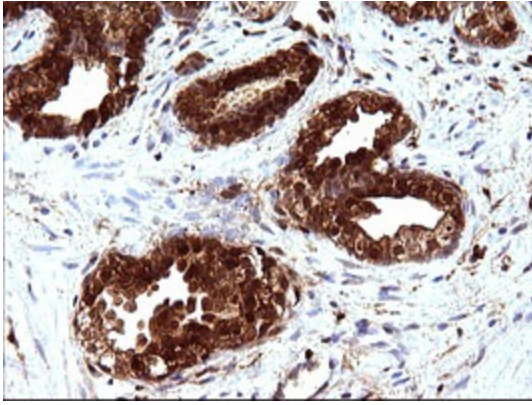
Immunohistochemical staining of paraffin-embedded Carcinoma of Human pancreas tissue using anti-LGALS3 mouse monoclonal antibody ([TA506401]) at 1:150 dilution.



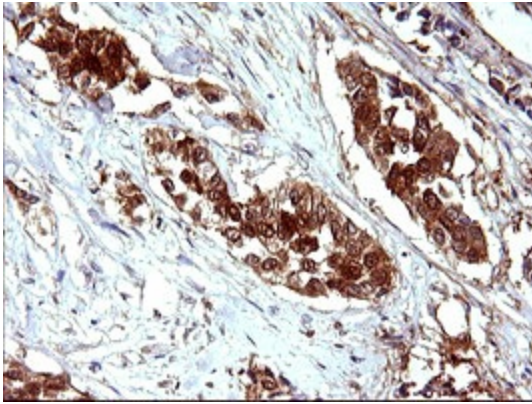
Immunohistochemical staining of paraffin-embedded Human endometrium tissue within the normal limits using anti-LGALS3 mouse monoclonal antibody ([TA506401]) at 1:150 dilution.



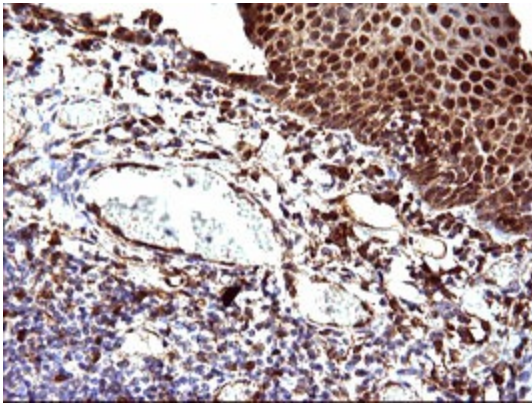
Immunohistochemical staining of paraffin-embedded Human prostate tissue within the normal limits using anti-LGALS3 mouse monoclonal antibody ([TA506401]) at 1:150 dilution.



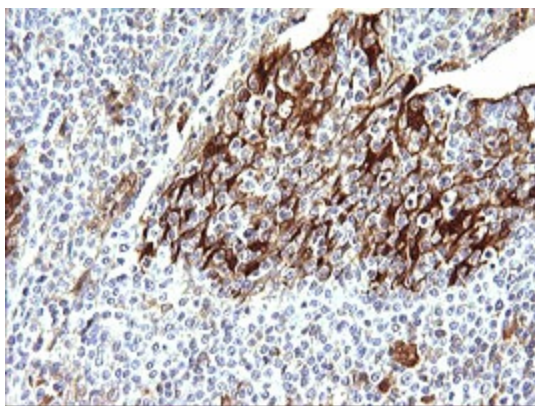
Immunohistochemical staining of paraffin-embedded Carcinoma of Human prostate tissue using anti-LGALS3 mouse monoclonal antibody ([TA506401]) at 1:150 dilution.



Immunohistochemical staining of paraffin-embedded Carcinoma of Human bladder tissue using anti-LGALS3 mouse monoclonal antibody ([TA506401]) at 1:150 dilution.



Immunohistochemical staining of paraffin-embedded Human lymph node tissue within the normal limits using anti-LGALS3 mouse monoclonal antibody ([TA506401]) at 1:150 dilution.



Immunohistochemical staining of paraffin-embedded Human lymphoma tissue using anti-LGALS3 mouse monoclonal antibody ([TA506401]) at 1:150 dilution.