

Product datasheet for **TA506398**

Galectin 3 (LGALS3) Mouse Monoclonal Antibody [Clone ID: OTI1A4]

Product data:

Product Type:	Primary Antibodies
Clone Name:	OTI1A4
Applications:	IF, WB
Recommended Dilution:	WB 1:400 - 1:2000, IF 1:100
Reactivity:	Human, Mouse
Host:	Mouse
Isotype:	IgG1
Clonality:	Monoclonal
Immunogen:	Full length human recombinant protein of human LGALS3(NP_002297) produced in HEK293T cell.
Formulation:	PBS (pH 7.3) containing 1% BSA, 50% glycerol and 0.02% sodium azide.
Concentration:	1 mg/ml
Purification:	Purified from mouse ascites fluids or tissue culture supernatant by affinity chromatography (protein A/G)
Conjugation:	Unconjugated
Storage:	Store at -20°C as received.
Stability:	Stable for 12 months from date of receipt.
Predicted Protein Size:	26 kDa
Gene Name:	galectin 3
Database Link:	NP_002297 Entrez Gene 16854 Mouse Entrez Gene 3958 Human P17931



[View online »](#)

Background:

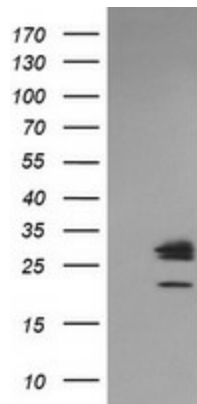
This gene encodes a member of the galectin family of carbohydrate binding proteins. Members of this protein family have an affinity for beta-galactosides. The encoded protein is characterized by an N-terminal proline-rich tandem repeat domain and a single C-terminal carbohydrate recognition domain. This protein can self-associate through the N-terminal domain allowing it to bind to multivalent saccharide ligands. This protein localizes to the extracellular matrix, the cytoplasm and the nucleus. This protein plays a role in numerous cellular functions including apoptosis, innate immunity, cell adhesion and T-cell regulation. Alternate splicing results in multiple transcript variants. [provided by RefSeq, Apr 2010]

Synonyms:

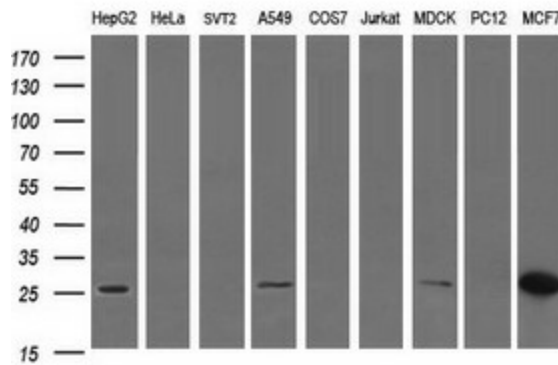
CBP35; GAL3; GALBP; GALIG; L31; LGALS2; MAC2

Protein Families:

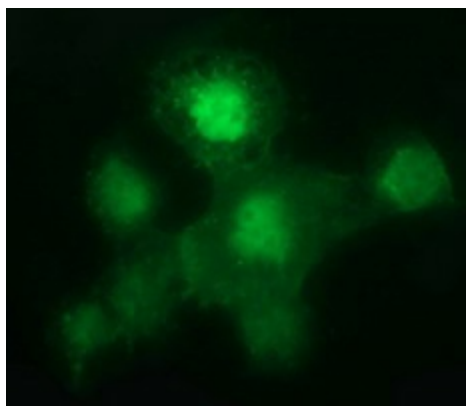
Secreted Protein

Product images:


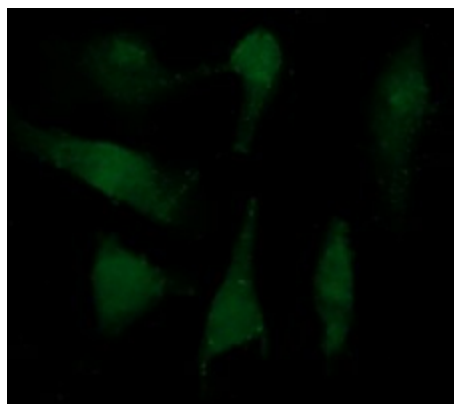
HEK293T cells were transfected with the pCMV6-ENTRY control (Left lane) or pCMV6-ENTRY LGALS3 ([RC208785], Right lane) cDNA for 48 hrs and lysed. Equivalent amounts of cell lysates (5 ug per lane) were separated by SDS-PAGE and immunoblotted with anti-LGALS3. Positive lysates [LY400834] (100ug) and [LC400834] (20ug) can be purchased separately from OriGene.



Western blot analysis of extracts (35ug) from 9 different cell lines by using anti-LGALS3 monoclonal antibody at 1:400 dilution (HepG2: human; HeLa: human; SVT2: mouse; A549: human; COS7: monkey; Jurkat: human; MDCK: canine; PC12: rat; MCF7: human).



Anti-LGALS3 mouse monoclonal antibody (TA506398) immunofluorescent staining of COS7 cells transiently transfected by pCMV6-ENTRY LGALS3 ([RC208785]).



Immunofluorescent staining of HeLa cells using anti-LGALS3 mouse monoclonal antibody (TA506398).