

Product datasheet for **TA506389AM**

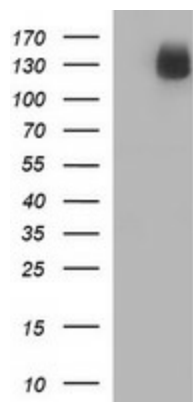
CD163 Mouse Monoclonal Antibody (Biotin conjugated) [Clone ID: OTI3C4]

Product data:

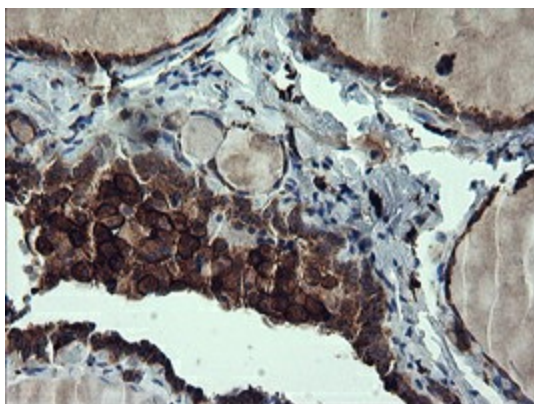
Product Type:	Primary Antibodies
Clone Name:	OTI3C4
Applications:	IF, IHC, LMNX, WB
Recommended Dilution:	WB 1:4000, IHC 1:500, IF 1:100
Reactivity:	Human
Host:	Mouse
Isotype:	IgG2a
Clonality:	Monoclonal
Immunogen:	Full length human recombinant protein of human CD163(NP_004235) produced in HEK293T cell.
Formulation:	PBS (pH 7.3) containing 1% BSA, 50% glycerol and 0.02% sodium azide.
Concentration:	0.5 mg/ml
Purification:	Purified from mouse ascites fluids or tissue culture supernatant by affinity chromatography (protein A/G)
Conjugation:	Biotin
Storage:	Store at -20°C as received.
Stability:	Stable for 12 months from date of receipt.
Predicted Protein Size:	125.3 kDa
Gene Name:	CD163 molecule
Database Link:	NP_004235 Entrez Gene 9332 Human Q86VB7
Synonyms:	M130; MM130; SCARI1
Protein Families:	Druggable Genome, Secreted Protein, Transmembrane



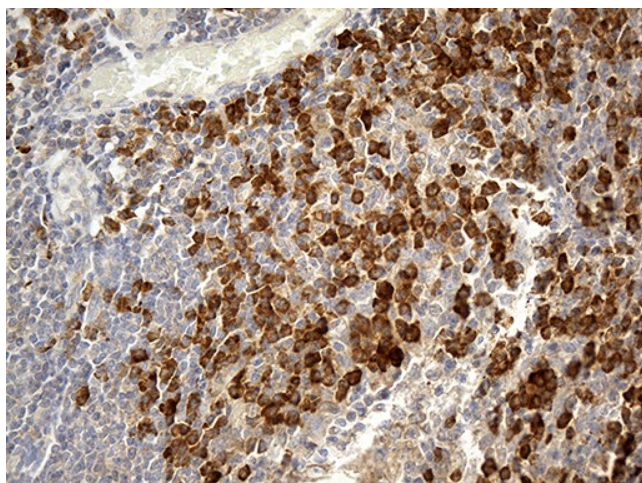
[View online »](#)

Product images:

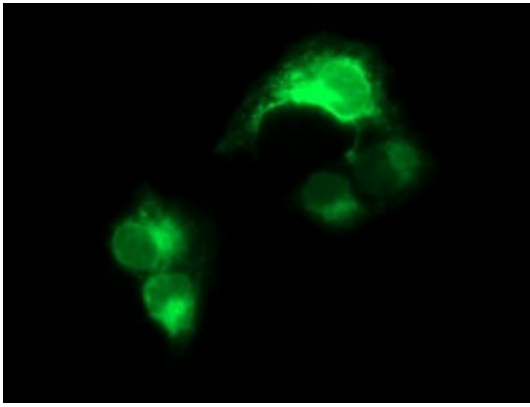
HEK293T cells were transfected with the pCMV6-ENTRY control (Left lane) or pCMV6-ENTRY CD163 ([RC208557], Right lane) cDNA for 48 hrs and lysed. Equivalent amounts of cell lysates (5 ug per lane) were separated by SDS-PAGE and immunoblotted with anti-CD163. Positive lysates [LY401362] (100ug) and [LC401362] (20ug) can be purchased separately from OriGene.



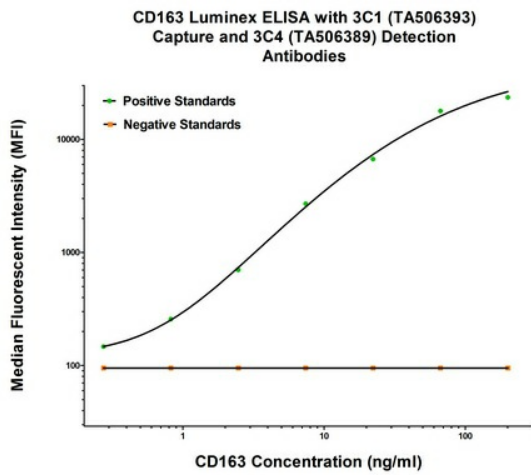
Immunohistochemical staining of paraffin-embedded Human thyroid tissue within the normal limits using anti-CD163 mouse monoclonal antibody. (Heat-induced epitope retrieval by 10mM citric buffer, pH6.0, 120°C for 3min, [TA506389])



Immunohistochemical staining of paraffin-embedded Human tonsil within the normal limits using anti-CD163 mouse monoclonal antibody. (Heat-induced epitope retrieval by 1mM EDTA in 10mM Tris buffer (pH8.5) at 120°C for 3min, [TA506389]) (1:500)



Anti-CD163 mouse monoclonal antibody ([TA506389]) immunofluorescent staining of COS7 cells transiently transfected by pCMV6-ENTRY CD163 ([RC208557]).



CD163 Luminex with 3C1 Capture ([TA506393]) and 3C4 Detection ([TA506389]) Antibodies. Substrate used: full length HEK293 cells expressed recombinant protein of human CD163 ([TP308557]).