

## Product datasheet for **TA506386S**

### CD163 Mouse Monoclonal Antibody [Clone ID: OTI3B4]

#### Product data:

Product Type:	Primary Antibodies
Clone Name:	OTI3B4
Applications:	IF, IHC, LMNX, WB
Recommended Dilution:	WB 1:200~4000, IHC 1:150, IF 1:100
Reactivity:	Human
Host:	Mouse
Isotype:	IgG2a
Clonality:	Monoclonal
Immunogen:	Full length human recombinant protein of human CD163(NP_004235) produced in HEK293T cell.
Formulation:	PBS (pH 7.3) containing 1% BSA, 50% glycerol and 0.02% sodium azide.
Concentration:	1 mg/ml
Purification:	Purified from mouse ascites fluids or tissue culture supernatant by affinity chromatography (protein A/G)
Conjugation:	Unconjugated
Storage:	Store at -20°C as received.
Stability:	Stable for 12 months from date of receipt.
Predicted Protein Size:	125.3 kDa
Gene Name:	CD163 molecule
Database Link:	<a href="#">NP_004235</a> <a href="#">Entrez Gene 9332 Human</a> <a href="#">Q86VB7</a>



[View online »](#)

**Background:**

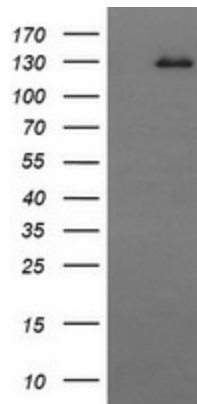
The protein encoded by this gene is a member of the scavenger receptor cysteine-rich (SRCR) superfamily, and is exclusively expressed in monocytes and macrophages. It functions as an acute phase-regulated receptor involved in the clearance and endocytosis of hemoglobin/haptoglobin complexes by macrophages, and may thereby protect tissues from free hemoglobin-mediated oxidative damage. This protein may also function as an innate immune sensor for bacteria and inducer of local inflammation. Alternatively spliced transcript variants encoding different isoforms have been described for this gene. [provided by RefSeq, Aug 2011]

**Synonyms:**

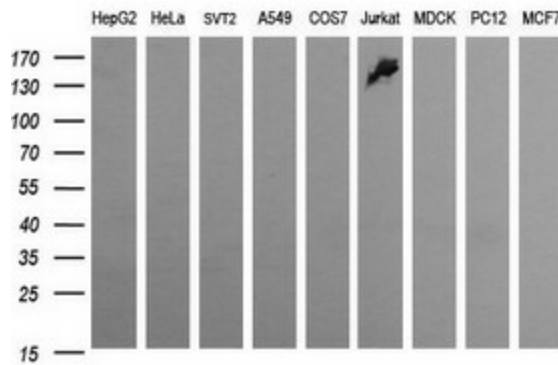
M130; MM130; SCAR11

**Protein Families:**

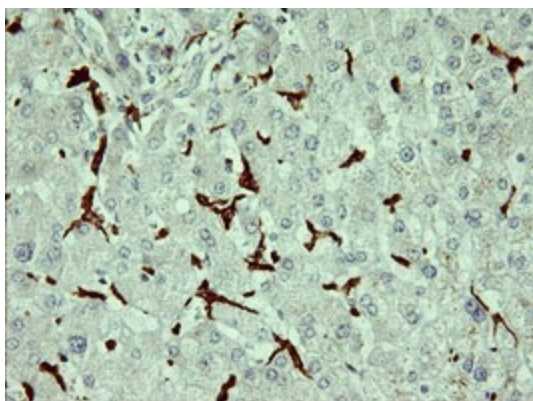
Druggable Genome, Secreted Protein, Transmembrane

**Product images:**


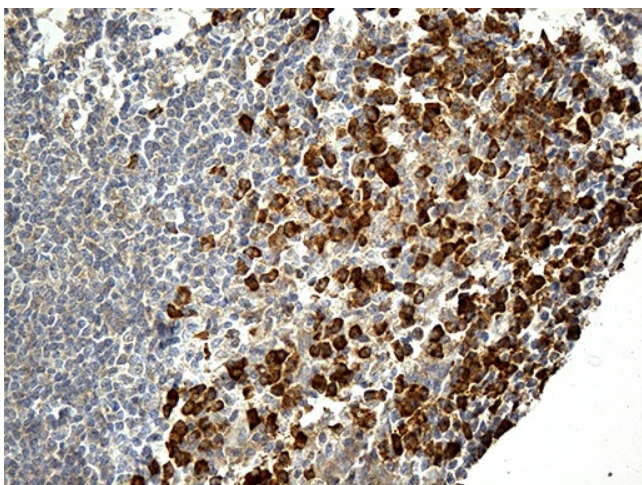
HEK293T cells were transfected with the pCMV6-ENTRY control (Left lane) or pCMV6-ENTRY CD163 ([RC208557], Right lane) cDNA for 48 hrs and lysed. Equivalent amounts of cell lysates (5 ug per lane) were separated by SDS-PAGE and immunoblotted with anti-CD163. Positive lysates [LY401362] (100ug) and [LC401362] (20ug) can be purchased separately from OriGene.



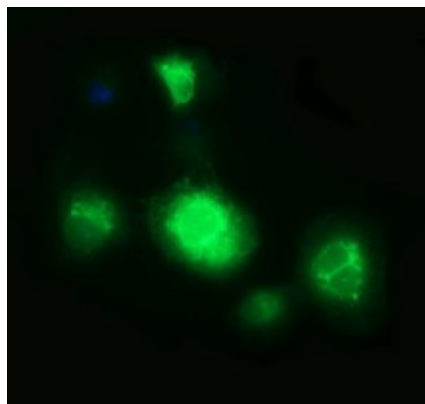
Western blot analysis of extracts (35ug) from 9 different cell lines by using anti-CD163 monoclonal antibody (HepG2: human; HeLa: human; SVT2: mouse; A549: human; COS7: monkey; Jurkat: human; MDCK: canine; PC12: rat; MCF7: human).



Immunohistochemical staining of paraffin-embedded Human liver tissue within the normal limits using anti-CD163 mouse monoclonal antibody. (Heat-induced epitope retrieval by 10mM citric buffer, pH6.0, 120°C for 3min, [TA506386])

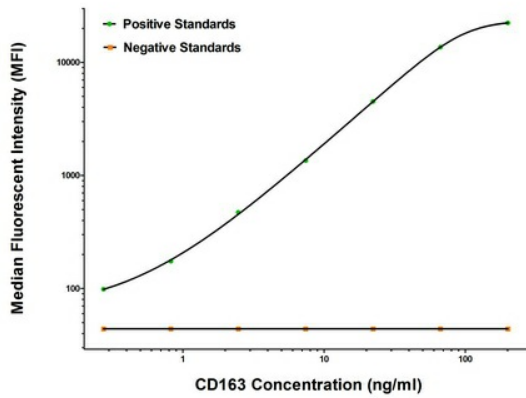


Immunohistochemical staining of paraffin-embedded Human tonsil within the normal limits using anti-CD163 mouse monoclonal antibody. (Heat-induced epitope retrieval by 1mM EDTA in 10mM Tris buffer (pH8.5) at 120°C for 3min, [TA506386]) (1:500)



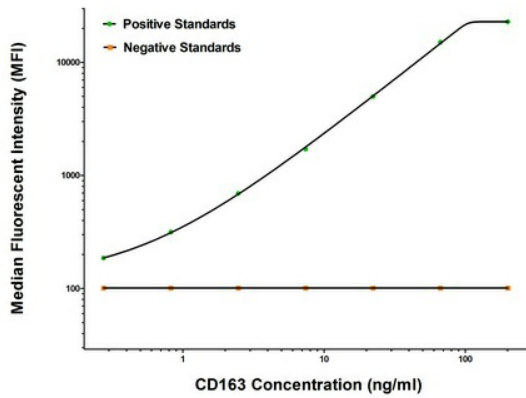
Anti-CD163 mouse monoclonal antibody ([TA506386]) immunofluorescent staining of COS7 cells transiently transfected by pCMV6-ENTRY CD163 ([RC208557]).

CD163 Luminex ELISA with 3B4 (TA506386)  
Capture and 2C7 (TA506384) Detection  
Antibodies



CD163 Luminex with 3B4 Capture ([TA506386]) and 2C7 Detection ([TA506384]) Antibodies. Substrate used: full length HEK293 cells expressed recombinant protein of human CD163 ([TP308557]).

CD163 Luminex ELISA with 3C1 (TA506393)  
Capture and 3B4 (TA506386) Detection  
Antibodies



CD163 Luminex with 3C1 Capture ([TA506393]) and 3B4 Detection ([TA506386]) Antibodies. Substrate used: full length HEK293 cells expressed recombinant protein of human CD163 ([TP308557]).