

## Product datasheet for **TA506378**

### IDO1 Mouse Monoclonal Antibody [Clone ID: OTI1E11]

#### Product data:

Product Type:	Primary Antibodies
Clone Name:	OTI1E11
Applications:	IF, IHC, WB
Recommended Dilution:	WB 1:4000, IHC 1:150, IF 1:100
Reactivity:	Human
Host:	Mouse
Isotype:	IgG1
Clonality:	Monoclonal
Immunogen:	Full length human recombinant protein of human IDO1(NP_002155) produced in HEK293T cell.
Formulation:	PBS (pH 7.3) containing 1% BSA, 50% glycerol and 0.02% sodium azide.
Concentration:	1 mg/ml
Purification:	Purified from mouse ascites fluids or tissue culture supernatant by affinity chromatography (protein A/G)
Conjugation:	Unconjugated
Storage:	Store at -20°C as received.
Stability:	Stable for 12 months from date of receipt.
Predicted Protein Size:	45.1 kDa
Gene Name:	indoleamine 2,3-dioxygenase 1
Database Link:	<a href="#">NP_002155</a> <a href="#">Entrez Gene 3620 Human</a> <a href="#">P14902</a>



[View online »](#)

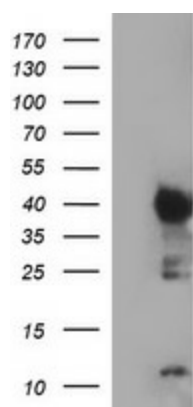
**Background:** This gene encodes indoleamine 2,3-dioxygenase (IDO) - a heme enzyme that catalyzes the first and rate-limiting step in tryptophan catabolism to N-formyl-kynurenine. This enzyme acts on multiple tryptophan substrates including D-tryptophan, L-tryptophan, 5-hydroxy-tryptophan, tryptamine, and serotonin. This enzyme is thought to play a role in a variety of pathophysiological processes such as antimicrobial and antitumor defense, neuropathology, immunoregulation, and antioxidant activity. Through its expression in dendritic cells, monocytes, and macrophages this enzyme modulates T-cell behavior by its peri-cellular catabolization of the essential amino acid tryptophan. [provided by RefSeq, Feb 2011]

**Synonyms:** IDO; IDO-1; INDO

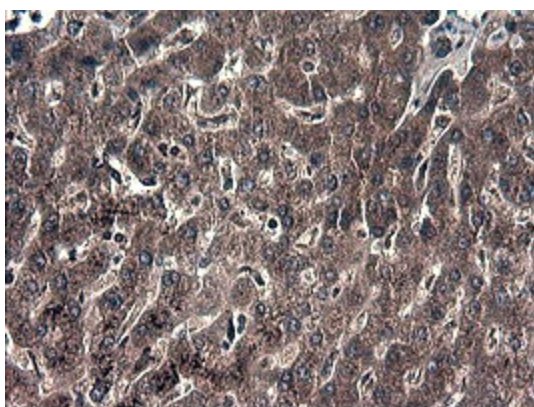
**Protein Families:** Druggable Genome

**Protein Pathways:** Metabolic pathways, Tryptophan metabolism

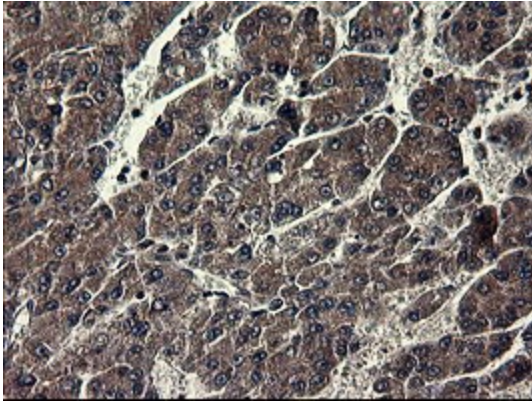
### Product images:



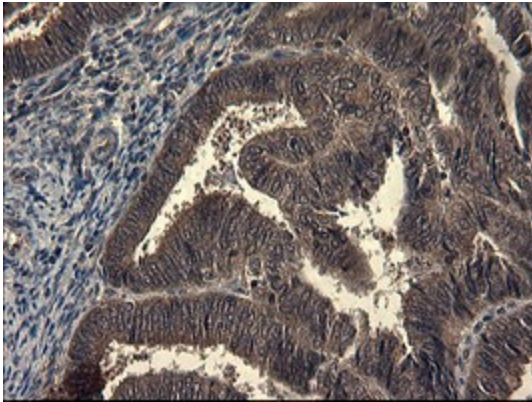
HEK293T cells were transfected with the pCMV6-ENTRY control (Left lane) or pCMV6-ENTRY IDO1 [RC206592], Right lane) cDNA for 48 hrs and lysed. Equivalent amounts of cell lysates (5 ug per lane) were separated by SDS-PAGE and immunoblotted with anti-IDO1. Positive lysates [LY400784] (100ug) and [LC400784] (20ug) can be purchased separately from OriGene.



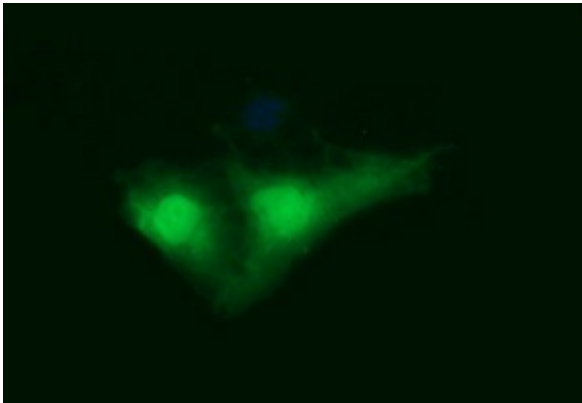
Immunohistochemical staining of paraffin-embedded Human liver tissue within the normal limits using anti-IDO1 mouse monoclonal antibody. (Heat-induced epitope retrieval by 10mM citric buffer, pH6.0, 120°C for 3min, TA506378)



Immunohistochemical staining of paraffin-embedded Carcinoma of Human liver tissue using anti-IDO1 mouse monoclonal antibody. (Heat-induced epitope retrieval by 10mM citric buffer, pH6.0, 120°C for 3min, TA506378)



Immunohistochemical staining of paraffin-embedded Adenocarcinoma of Human endometrium tissue using anti-IDO1 mouse monoclonal antibody. (Heat-induced epitope retrieval by 10mM citric buffer, pH6.0, 120°C for 3min, TA506378)



Anti-IDO1 mouse monoclonal antibody (TA506378) immunofluorescent staining of COS7 cells transiently transfected by pCMV6-ENTRY IDO1 ([RC206592]).