

Product datasheet for **TA506371BM**

IDO1 Mouse Monoclonal Antibody (HRP conjugated) [Clone ID: OTI4C11]

Product data:

Product Type:	Primary Antibodies
Clone Name:	OTI4C11
Applications:	IF, WB
Recommended Dilution:	WB 1:4000, IF 1:100
Reactivity:	Human
Host:	Mouse
Isotype:	IgG1
Clonality:	Monoclonal
Immunogen:	Full length human recombinant protein of human IDO1(NP_002155) produced in HEk293T cell.
Formulation:	PBS (pH 7.3) containing 1% BSA, 50% glycerol.
Concentration:	0.5 mg/ml
Purification:	Purified from mouse ascites fluids or tissue culture supernatant by affinity chromatography (protein A/G)
Conjugation:	HRP
Storage:	Store at -20°C as received.
Stability:	Stable for 12 months from date of receipt.
Predicted Protein Size:	45.1 kDa
Gene Name:	indoleamine 2,3-dioxygenase 1
Database Link:	NP_002155 Entrez Gene 3620 Human P14902



[View online »](#)

Background:

This gene encodes indoleamine 2,3-dioxygenase (IDO) - a heme enzyme that catalyzes the first and rate-limiting step in tryptophan catabolism to N-formyl-kynurenine. This enzyme acts on multiple tryptophan substrates including D-tryptophan, L-tryptophan, 5-hydroxy-tryptophan, tryptamine, and serotonin. This enzyme is thought to play a role in a variety of pathophysiological processes such as antimicrobial and antitumor defense, neuropathology, immunoregulation, and antioxidant activity. Through its expression in dendritic cells, monocytes, and macrophages this enzyme modulates T-cell behavior by its peri-cellular catabolization of the essential amino acid tryptophan. [provided by RefSeq, Feb 2011]

Synonyms:

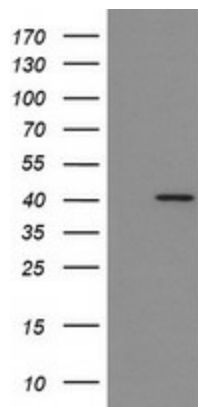
IDO; IDO-1; INDO

Protein Families:

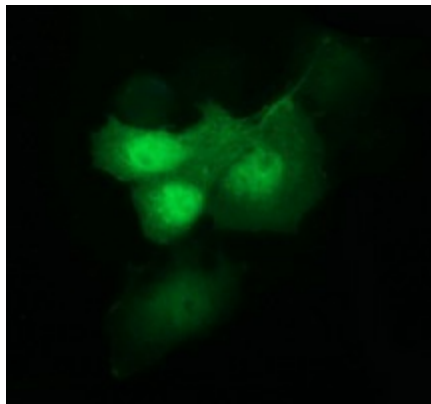
Druggable Genome

Protein Pathways:

Metabolic pathways, Tryptophan metabolism

Product images:

HEK293T cells were transfected with the pCMV6-ENTRY control (Left lane) or pCMV6-ENTRY IDO1 ([RC206592], Right lane) cDNA for 48 hrs and lysed. Equivalent amounts of cell lysates (5 ug per lane) were separated by SDS-PAGE and immunoblotted with anti-IDO1. Positive lysates [LY400784] (100ug) and [LC400784] (20ug) can be purchased separately from OriGene.



Anti-IDO1 mouse monoclonal antibody ([TA506371]) immunofluorescent staining of COS7 cells transiently transfected by pCMV6-ENTRY IDO1 ([RC206592]).