

Product datasheet for **TA506365**

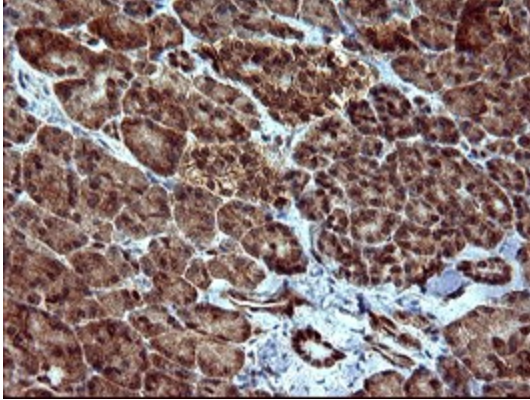
DOCK8 Mouse Monoclonal Antibody [Clone ID: OTI4F3]

Product data:

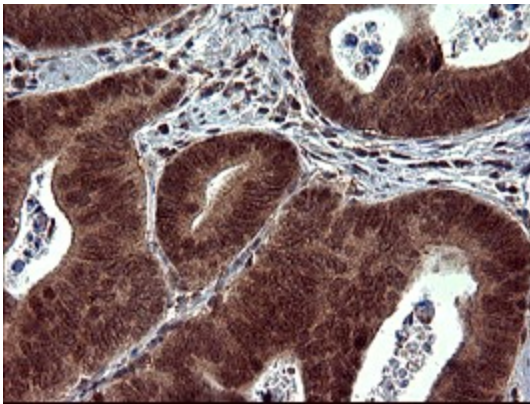
| | |
|-------------------------|---|
| Product Type: | Primary Antibodies |
| Clone Name: | OTI4F3 |
| Applications: | IHC |
| Recommended Dilution: | IHC 1:150 |
| Reactivity: | Human, Mouse, Rat |
| Host: | Mouse |
| Isotype: | IgG1 |
| Clonality: | Monoclonal |
| Immunogen: | Full length human recombinant protein of human DOCK8(NP_982272) produced in HEK293T cell. |
| Formulation: | PBS (pH 7.3) containing 1% BSA, 50% glycerol and 0.02% sodium azide. |
| Concentration: | 1 mg/ml |
| Purification: | Purified from mouse ascites fluids or tissue culture supernatant by affinity chromatography (protein A/G) |
| Conjugation: | Unconjugated |
| Storage: | Store at -20°C as received. |
| Stability: | Stable for 12 months from date of receipt. |
| Predicted Protein Size: | 238.3 kDa |
| Gene Name: | dedicator of cytokinesis 8 |
| Database Link: | NP_982272 Entrez Gene 76088 Mouse Entrez Gene 499337 Rat Entrez Gene 81704 Human Q8NF50 |
| Synonyms: | HEL-205; MRD2; ZIR8 |



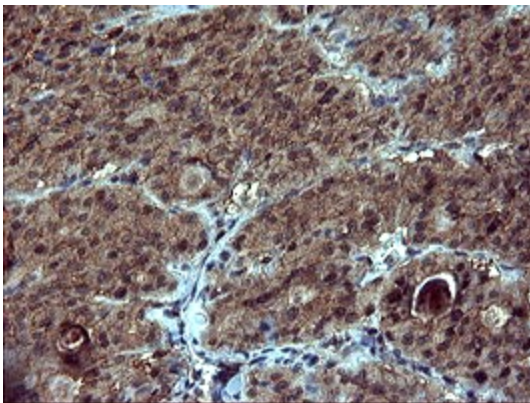
[View online »](#)

Product images:

Immunohistochemical staining of paraffin-embedded Human pancreas tissue within the normal limits using anti-DOCK8 mouse monoclonal antibody. (Heat-induced epitope retrieval by 10mM citric buffer, pH6.0, 120°C for 3min, TA506365)



Immunohistochemical staining of paraffin-embedded Carcinoma of Human pancreas tissue using anti-DOCK8 mouse monoclonal antibody. (Heat-induced epitope retrieval by 10mM citric buffer, pH6.0, 120°C for 3min, TA506365)



Immunohistochemical staining of paraffin-embedded Carcinoma of Human thyroid tissue using anti-DOCK8 mouse monoclonal antibody. (Heat-induced epitope retrieval by 10mM citric buffer, pH6.0, 120°C for 3min, TA506365)