

Product datasheet for **TA506285**

CD19 Mouse Monoclonal Antibody [Clone ID: OT11F9]

Product data:

Product Type:	Primary Antibodies
Clone Name:	OT11F9
Applications:	IF, IHC, WB
Recommended Dilution:	WB 1:4000, IHC 1:150, IF 1:100
Reactivity:	Human
Host:	Mouse
Isotype:	IgG1
Clonality:	Monoclonal
Immunogen:	Full length human recombinant protein of human CD19(NP_001761) produced in HEK293T cell.
Formulation:	PBS (pH 7.3) containing 1% BSA, 50% glycerol and 0.02% sodium azide.
Concentration:	1 mg/ml
Purification:	Purified from mouse ascites fluids or tissue culture supernatant by affinity chromatography (protein A/G)
Conjugation:	Unconjugated
Storage:	Store at -20°C as received.
Stability:	Stable for 12 months from date of receipt.
Predicted Protein Size:	60.9 kDa
Gene Name:	CD19 molecule
Database Link:	NP_001761 Entrez Gene 930 Human P15391
Background:	Lymphocytes proliferate and differentiate in response to various concentrations of different antigens. The ability of the B cell to respond in a specific, yet sensitive manner to the various antigens is achieved with the use of low-affinity antigen receptors. This gene encodes a cell surface molecule which assembles with the antigen receptor of B lymphocytes in order to decrease the threshold for antigen receptor-dependent stimulation. [provided by RefSeq, Jul 2008]



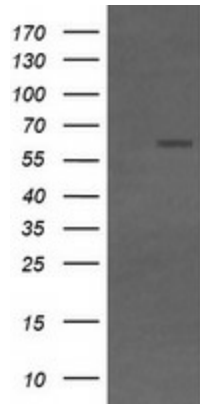
[View online »](#)

Synonyms: B4; CVID3

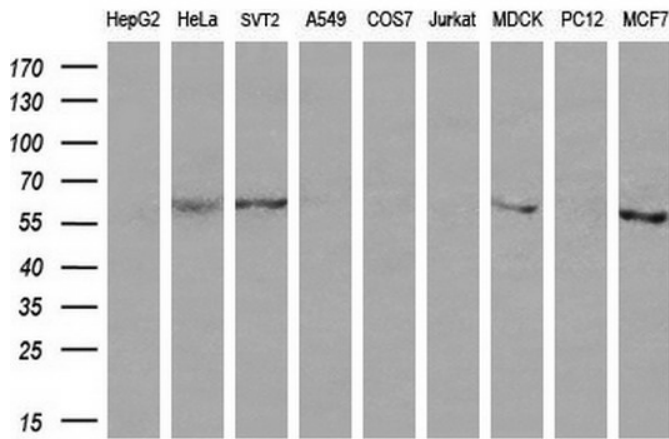
Protein Families: Druggable Genome, Transmembrane

Protein Pathways: B cell receptor signaling pathway, Hematopoietic cell lineage, Primary immunodeficiency

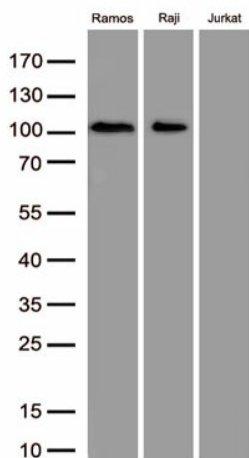
Product images:



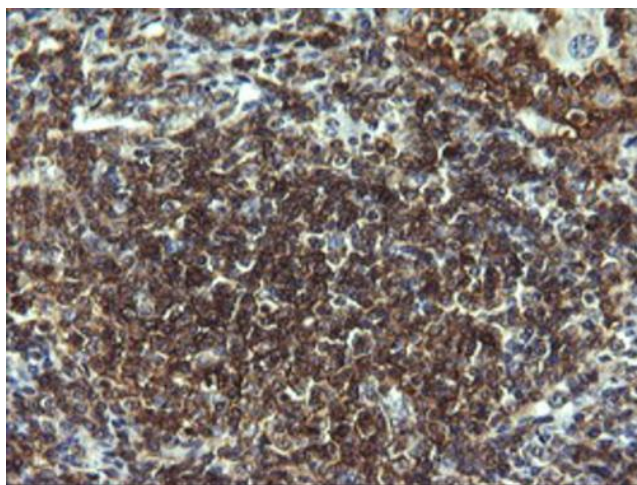
HEK293T cells were transfected with the pCMV6-ENTRY control (Left lane) or pCMV6-ENTRY CD19 ([RC202922], Right lane) cDNA for 48 hrs and lysed. Equivalent amounts of cell lysates (5 ug per lane) were separated by SDS-PAGE and immunoblotted with anti-CD19. Positive lysates [LY400678] (100ug) and [LC400678] (20ug) can be purchased separately from OriGene.



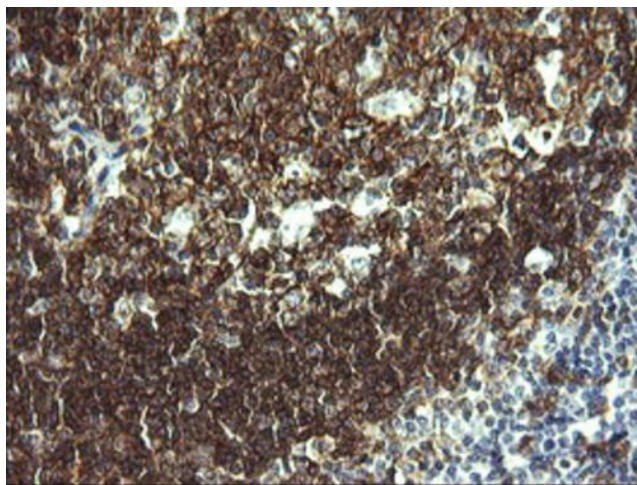
Western blot analysis of extracts (35ug) from 9 different cell lines by using anti-CD19 monoclonal antibody (HepG2: human; HeLa: human; SVT2: mouse; A549: human; COS7: monkey; Jurkat: human; MDCK: canine; PC12: rat; MCF7: human) (1:200).



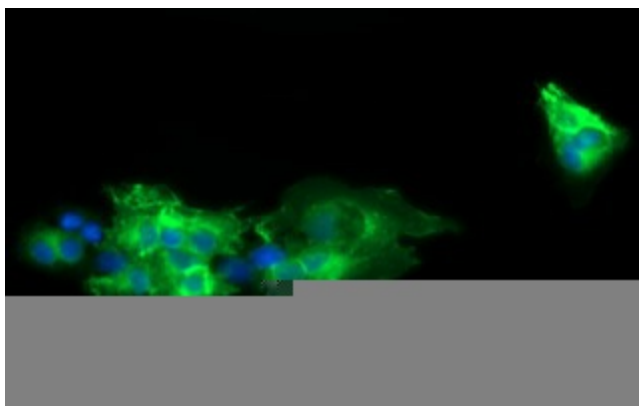
Western blot analysis of extracts (50ug per lane) from 3 cell lines lysates by using anti-CD19 monoclonal antibody(TA506285, 1:500)



Immunohistochemical staining of paraffin-embedded Human lymphoma tissue using anti-CD19 mouse monoclonal antibody. (Heat-induced epitope retrieval by 10mM citric buffer, pH6.0, 120°C for 3min, TA506285)



Immunohistochemical staining of paraffin-embedded Human tonsil within the normal limits using anti-CD19 mouse monoclonal antibody. (Heat-induced epitope retrieval by 10mM citric buffer, pH6.0, 120°C for 3min, TA506285)



Anti-CD19 mouse monoclonal antibody (TA506285) immunofluorescent staining of COS7 cells transiently transfected by pCMV6-ENTRY CD19 ([RC202922]).